



ABB seeds

Supplying Australia's most innovative crop varieties.



CANOBOLAS[®]

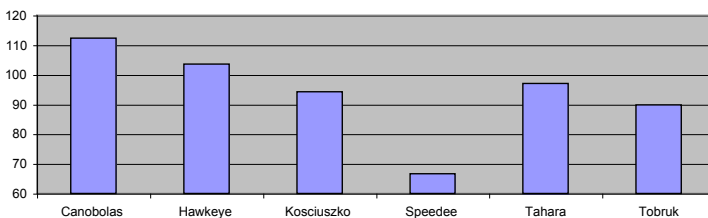
Triticale

Key Features

- ✓ Very high yield potential across a wide range of environments
- ✓ High levels of acid soil tolerance
- ✓ Very good resistance to current field strains of rust
- ✓ Strong straw, good resistance to lodging
- ✓ Plump grain, low screenings and dustings
- ✓ High test weight with good protein levels
- ✓ Seedling vigour
- ✓ High digestibility
- ✓ High energy levels

Yield

Yield (% of Site average)



2007 NVT Boorowa NSW t/ha



Growing Regions

To be used as a guide only

Overview

Canobolas Triticale is an early to mid season maturing, awned, grain type, triticale variety. Maturity is 1-2 days faster than Everest and Treat and is equivalent to a mid season wheat variety.

Canobolas is a widely adapted spring variety. It has superior acid soil (Al) tolerance to all other triticale varieties. It is ideally suited to the NSW Slopes and Tablelands, Nth East Vic and areas with acid soil symptoms.

Canobolas is resistant to all common field strains of rust including the latest, 'WA pathotype' of Stripe Rust. The Variety shows good seedling vigour and strong, upright growth habit. Canobolas produces a large, plump, golden brown grain, much larger than Everest, with low screenings and high digestible energy.

It is moderately tall, slightly taller than Kosciuszko, but shorter than Everest and Tahara. Canobolas has stiff straw and no lodging has been observed. It has even growth and is uniform in height and maturity at harvest.

Canobolas is an ideal replacement for all existing grain triticale varieties including Kosciuszko, Everest, Speedee and Tahara.

Rainfall

Season Break	Low ← 350	Med 350 - 450	High → 450
Early	Canobolas	Canobolas	Canobolas
Mid		Canobolas	Canobolas
Late			Canobolas



ABB seeds

Supplying Australia's most innovative crop varieties.



VARIETY SPECIFIC AGRONOMIC INFORMATION

Stoplight Disease Profile

Variety	Maturity	Stripe Rust	Stem Rust	Leaf Rust
Canobolas	E/M	R	R	R
Abacus	L	MR-R	R	R
Hawkeye	M	R	R-MR	R
Kosciuszko	M	S	R	R
Speedee	E	S	R	R
Tahara	E/M	MR	R	R

E = Early, M = Main, R = Resistant, MR = Moderately Resistant, S = Susceptible, L = Late. These stripe rust ratings are for the new "Jackie" strain. Source - NSW DPI

Grain Profile

Variety	1000 grain Weight	Test Weight	Whole Grain/Protein	Screenings %
Canobolas	41.7	70.1	14.7	2.5
Abacus	34.6	64.1	13.7	3.3
Hawkeye	41.1	68.0	12.9	2.1
Kosciuszko	38.7	67.6	14.1	1.9
Speedee	39.5	64.7	13.4	2.4
Tahara	39.6	65.2	14.4	2.7

2007 NVT Boorowa NSW

Yield

Town	NSW-NE NVT'06 Tamworth	NSW-NW NVT'06 Tomingley	NSW-SE NVT'06 Temora	NSW-SE NVT'07 Boorowa	NSW-NE UNE2006 Grafton	NSW-NW UNE2005 Narrabri	NSW-NW UNE2006 Narrabri	NSW-NW NVT'07 Narrabri
Canobolas	109	108	104	127	102	132	108	133
Abacus		63	88					
Credit	94	68	97					
Everest	100	97	103	97				101
Hawkeye	103	100	106					
Jaywick		98	95					
Kosciuszko	112	105	89	54	100	95	97	86
Speedee		33		89	98			81
Tahara	94	103	98	111	97	74	89	104
Ticket	102	103			92			
Tobruk	82	93	93					
Treat	96	94		97				103
Site Average t/ha	2.63	4.59	3.01	3.16	4.91	3.98	4.36	1.72

Yield expressed as a % of site mean. Source ACAS-NVT & University of New England (UNE).

Plant Profile

In testing, Canobolas has performed best in medium rainfall / yield potential situations. The variety Bogong, also bred by UNE, appears better suited to higher rainfall, cooler, later maturing conditions. Where frost risks are a concern Canobolas, along with all other triticales, should generally be sown 1-2 weeks after main season wheat varieties.

Plant Breeding Rights & Royalties[Ⓛ]

Canobolas[Ⓛ] is protected by Plant Breeder's Rights (PBR). Any unauthorised commercial propagation or any sale, conditioning, export, import or stocking of propagating material of this variety is an infringement under the Plant Breeder's Rights act 1994. Growers are allowed to retain seed from production of this variety for their own use as seed only.

Canobolas[Ⓛ] is subject to an EPR of \$2.20/mt (GST excl.), payable on all production excluding farm saved seed.

Breeding

Canobolas was selected by Dr. Robin Jessop, Mr Mike Fittler and the triticale breeding team at the University of New England, Armidale, NSW. Canobolas was tested by UNE as line H 418

Contact & Seed Purchasing

Canobolas is sold through your local seed retailer. Check with your local store for seed availability and advice on optimum sowing time and crop management. Wholesale distribution by ABB Seeds.

CONTACT - ABB Seeds on Toll Free Number 1800 018205. Visit the seed section at www.abb.com.au Email abbseeds@abb.com.au



Disclaimer: The information contained in this brochure is from official and other sources to July 2008 and is subject to change. Continuing agronomic evaluation or changes in pathogenicity of pests and diseases make it necessary for farmers to regularly seek updated information. ABB Grain Ltd. does not accept any responsibility for the consequences which may arise from the acceptance of recommendations or suggestions made. *All information current as at July 2008.