

Introduction:

At most National Variety Trial sites there is a small device - a Tiny Tag - that is designed to capture the air temperature every 15 minutes throughout the growing season. This data can be used by NVT staff in determining the effect of temperature stresses on trials.

On the list of locations below, there are some that are shaded with a blue background. These locations have temperature data available. The remaining sites have no data available either because it has yet to be received, there was no Tiny Tag present at the site or the Tiny Tag malfunctioned.

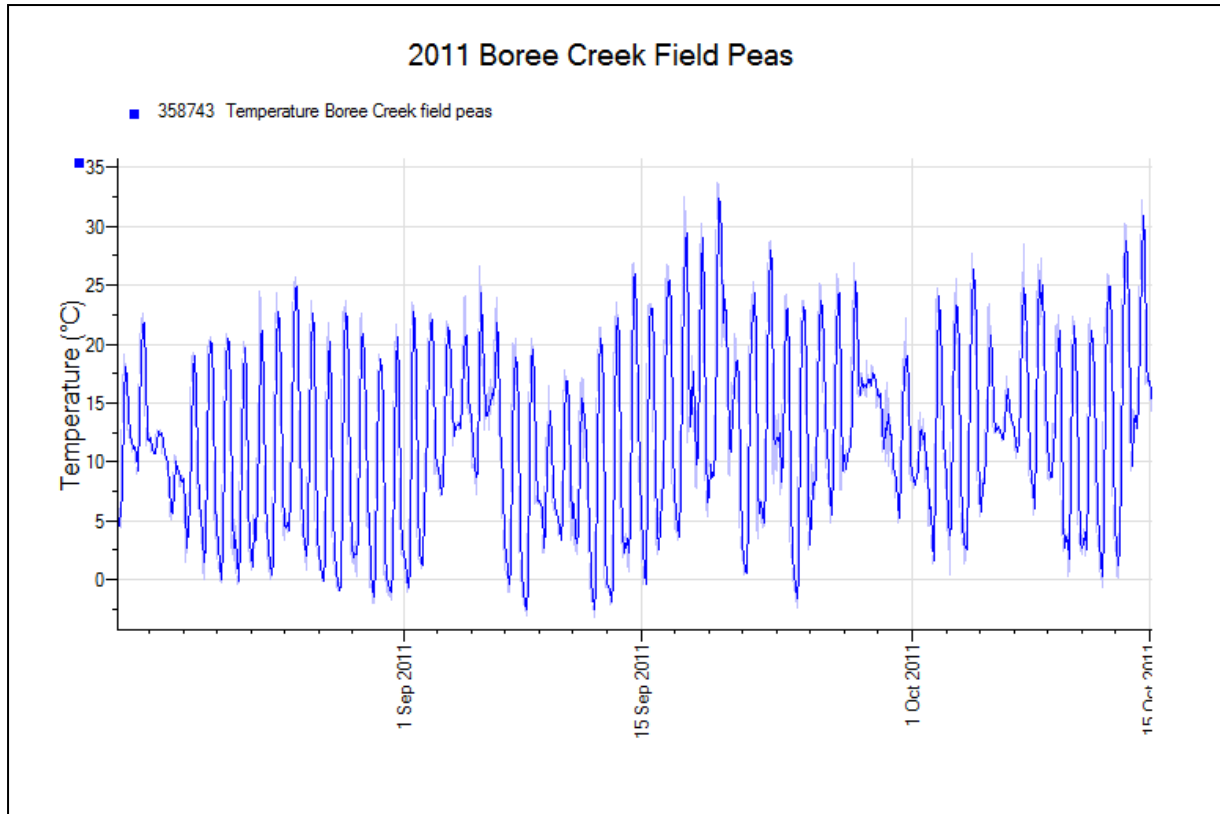
How to use this document:

Click on the location name to view the graph. The text is hyperlinked to the page with the graph for that location. To return to the list and view another location's data, click [home](#) at the top right corner of the page to return to this page.

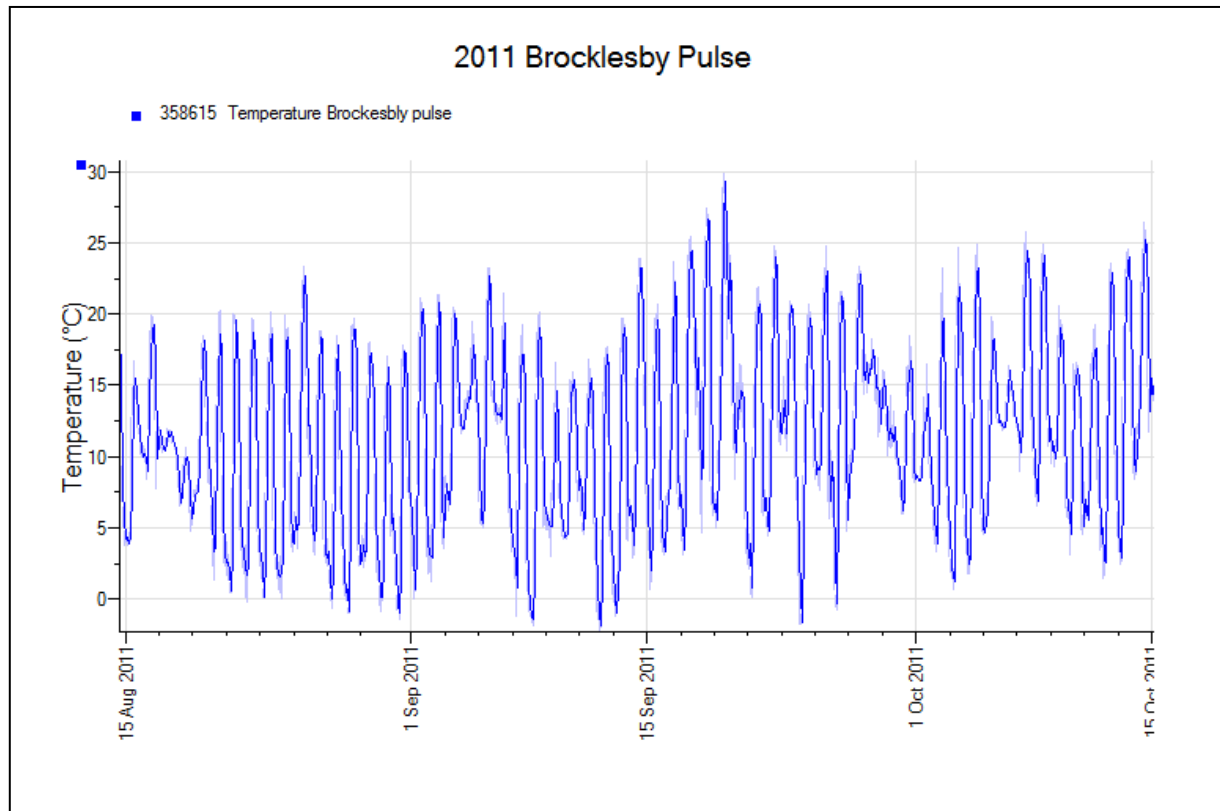
Trial Locations:

NSW	SA	VIC	WA
Boree Creek	Bool Lagoon	Birchip	Brookton
Brocklesby	Keith	Kaniva	Coorow
Condobolin	Lameroo	Rainbow	Grass Patch
Goonumbla	Laura	Tarranyurk	Holt Rock
Mayrung	Minlaton	Ultima	Katanning
Temora	Mundulla		Lake Camm
Trangie	Riverton		Merredin
	Rudall		Mingenew
	Willamulka		Muresk
	Yeelanna		Pingrup
			Wittenoom Hills

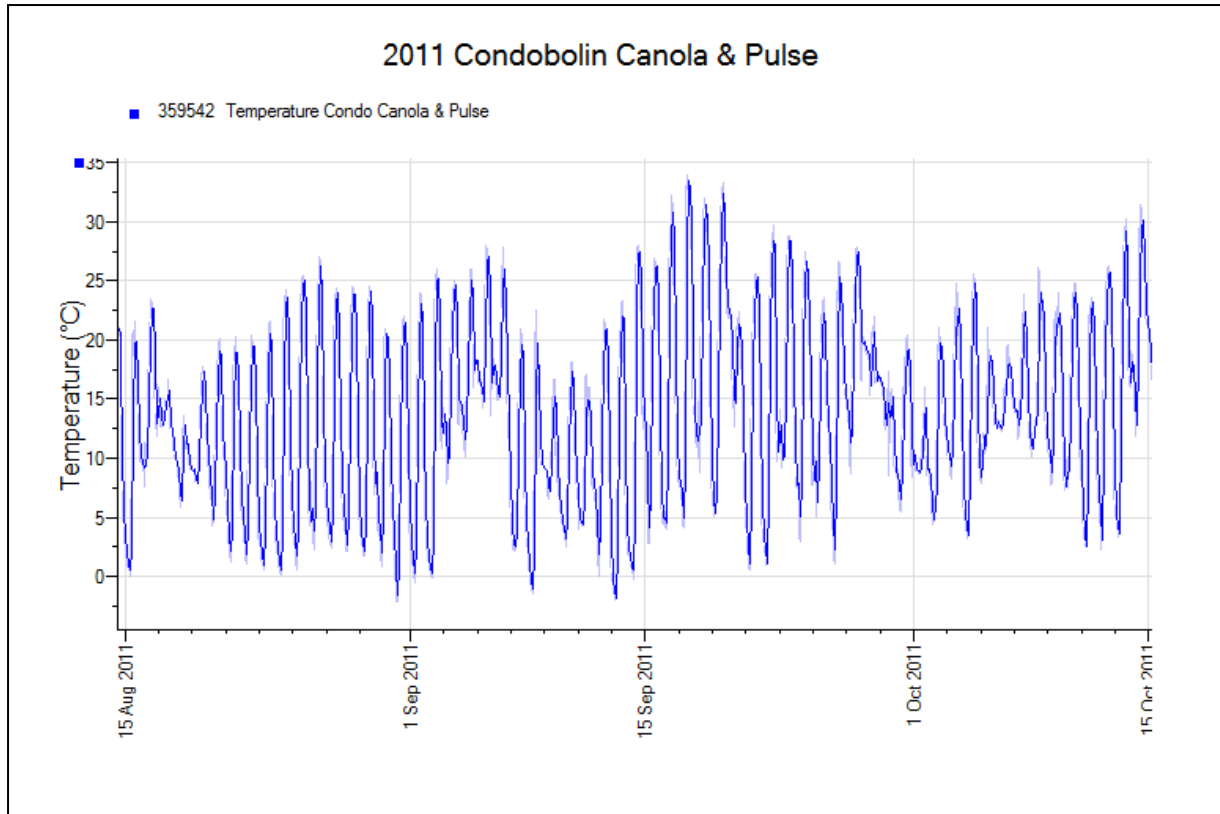
[Home](#)



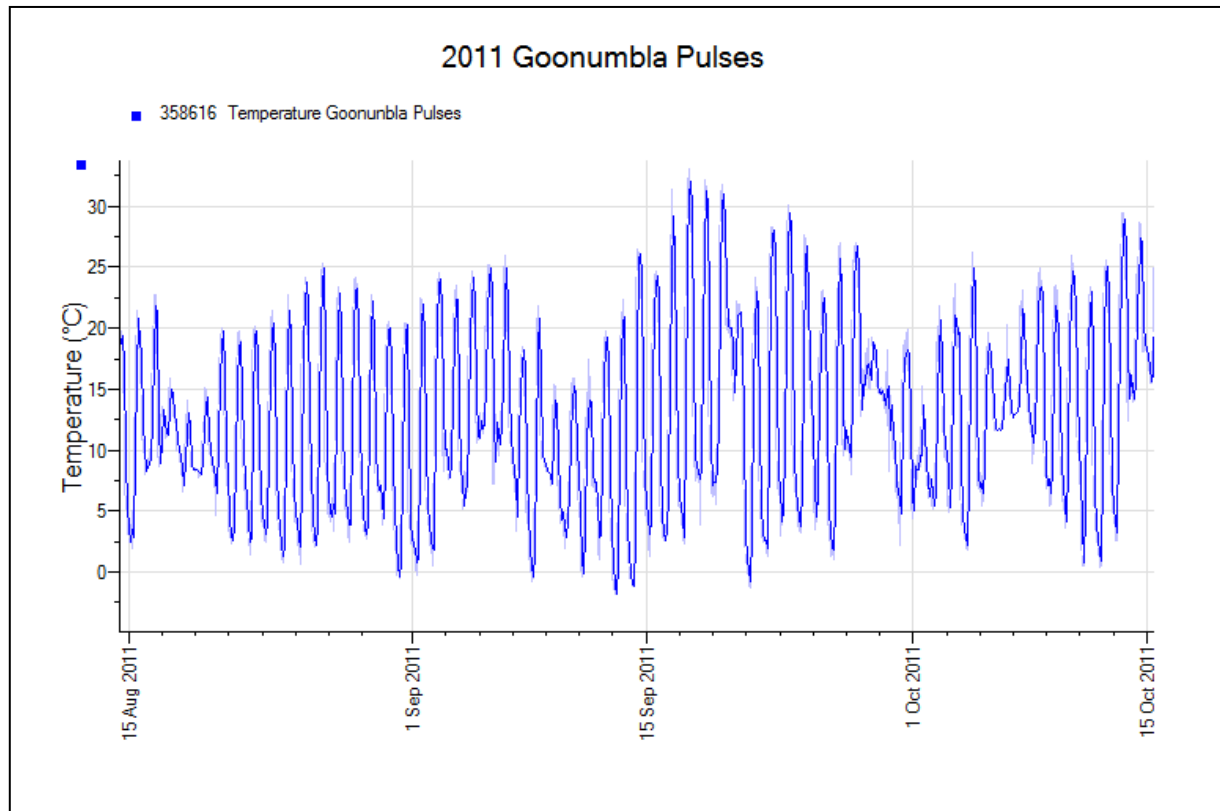
[Home](#)



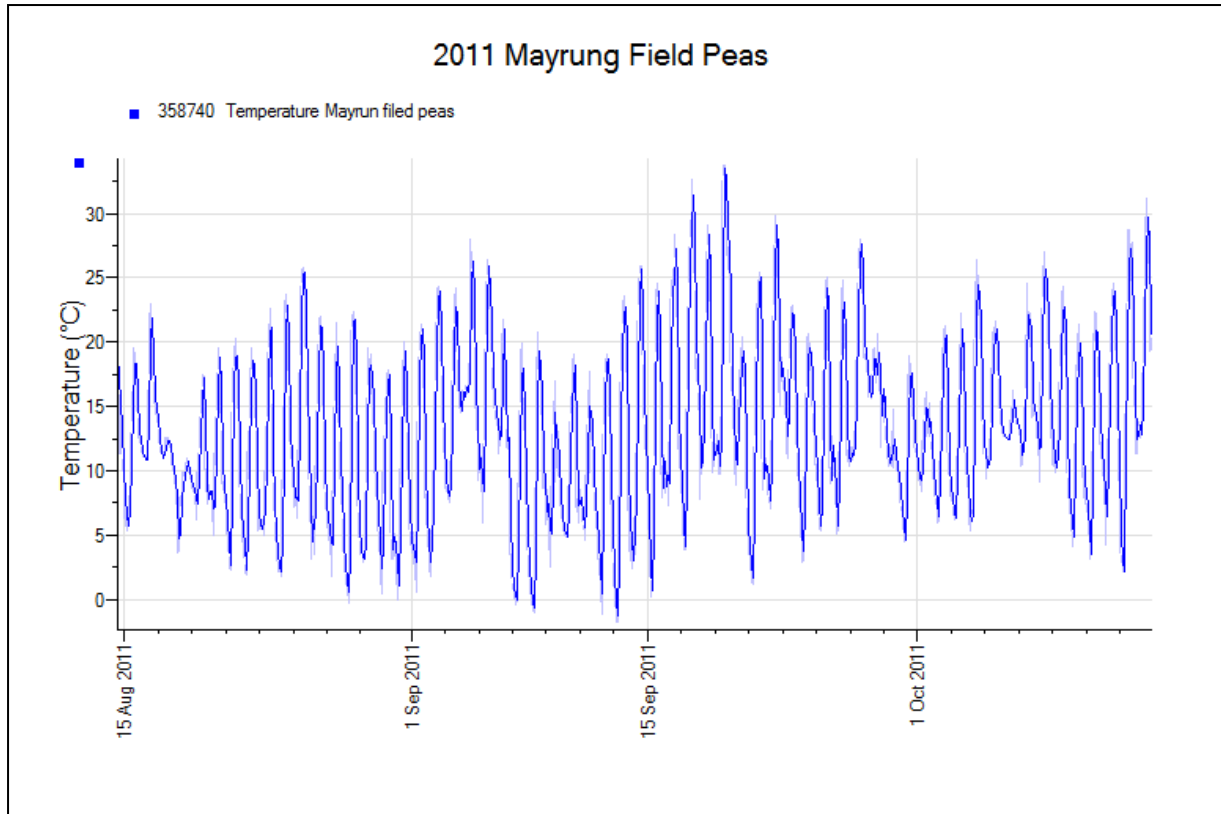
[Home](#)



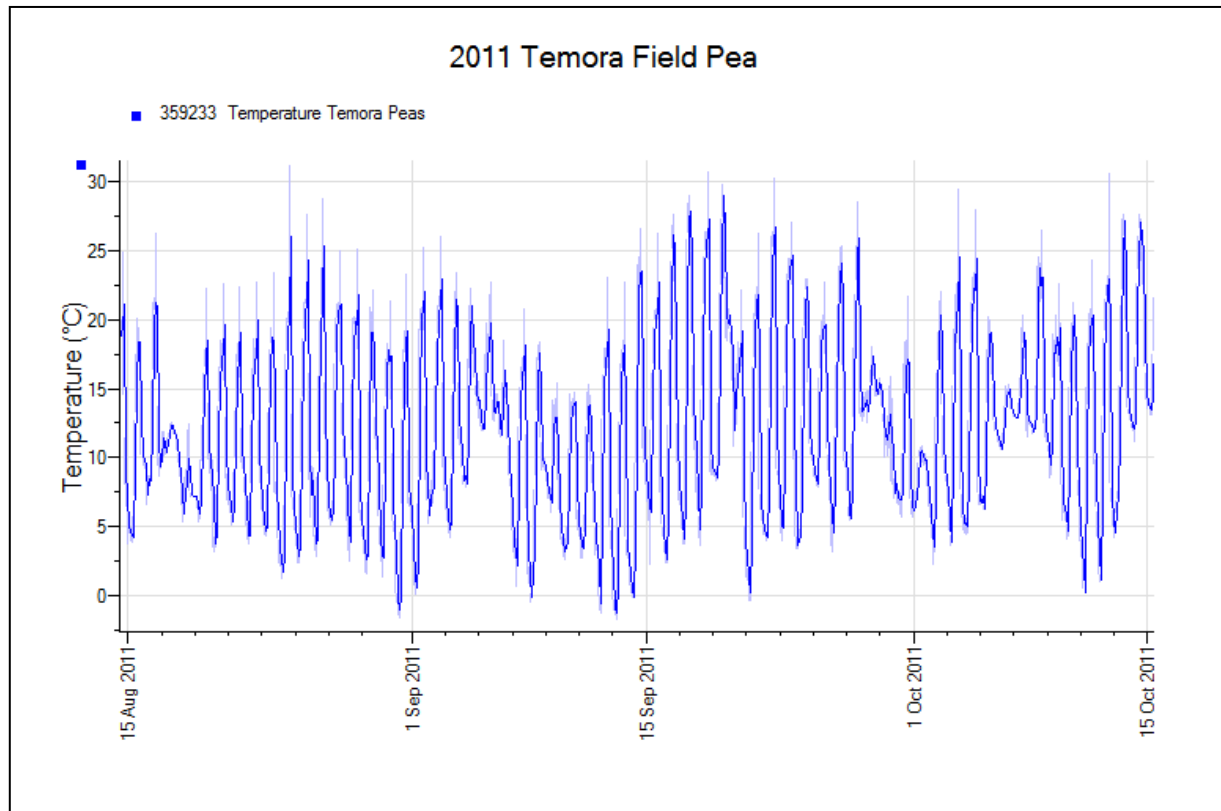
[Home](#)



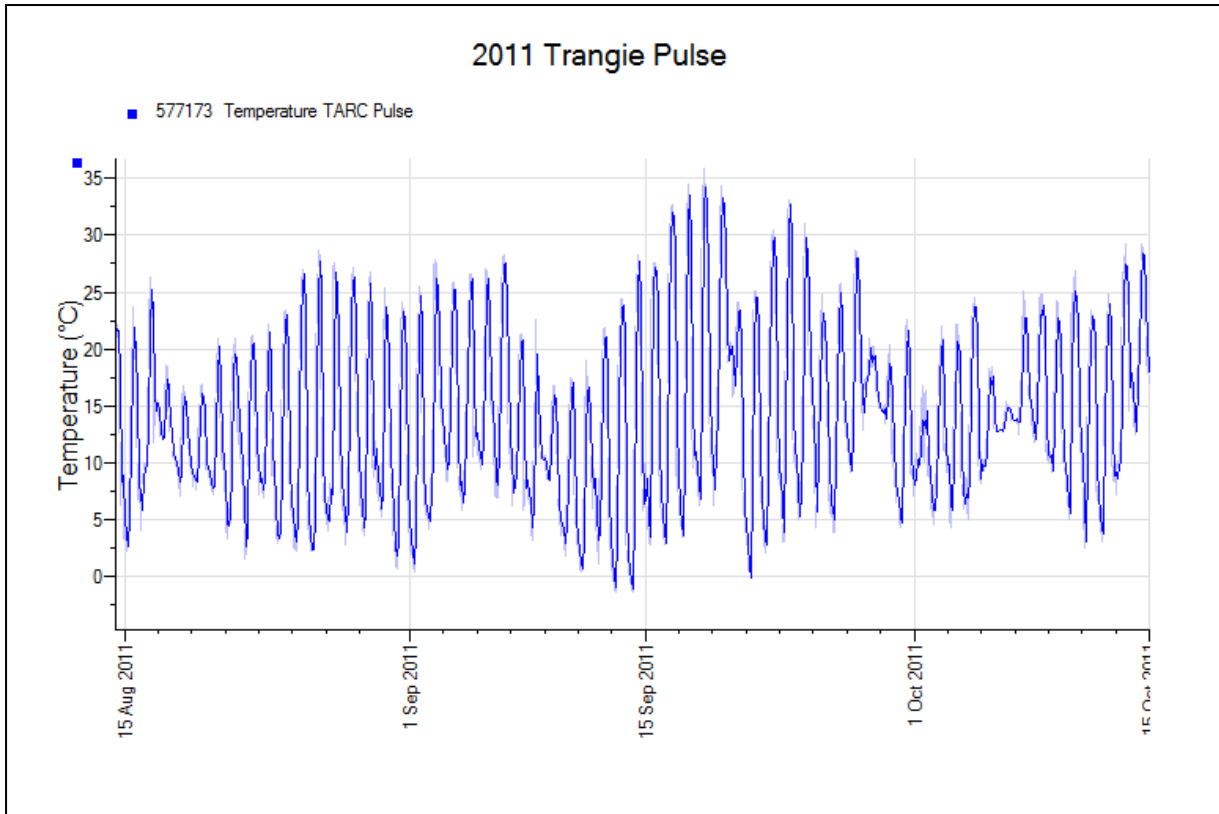
[Home](#)



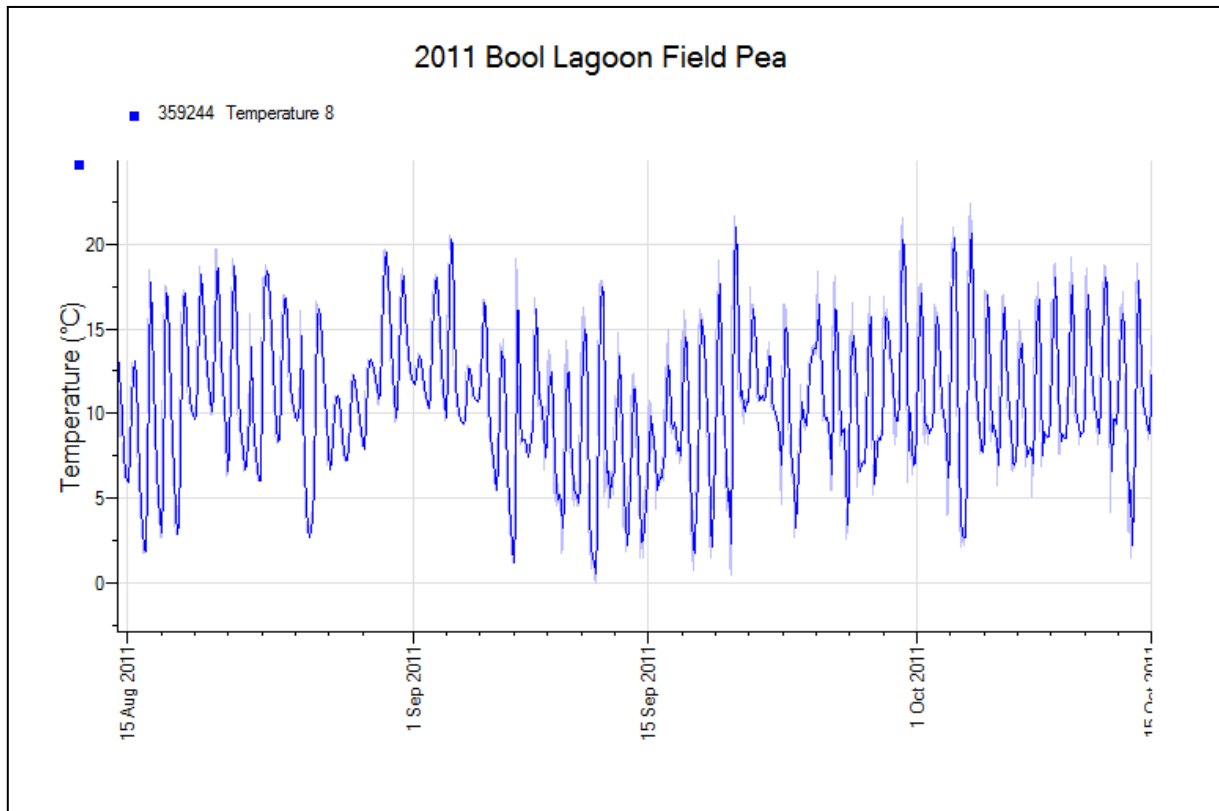
[Home](#)

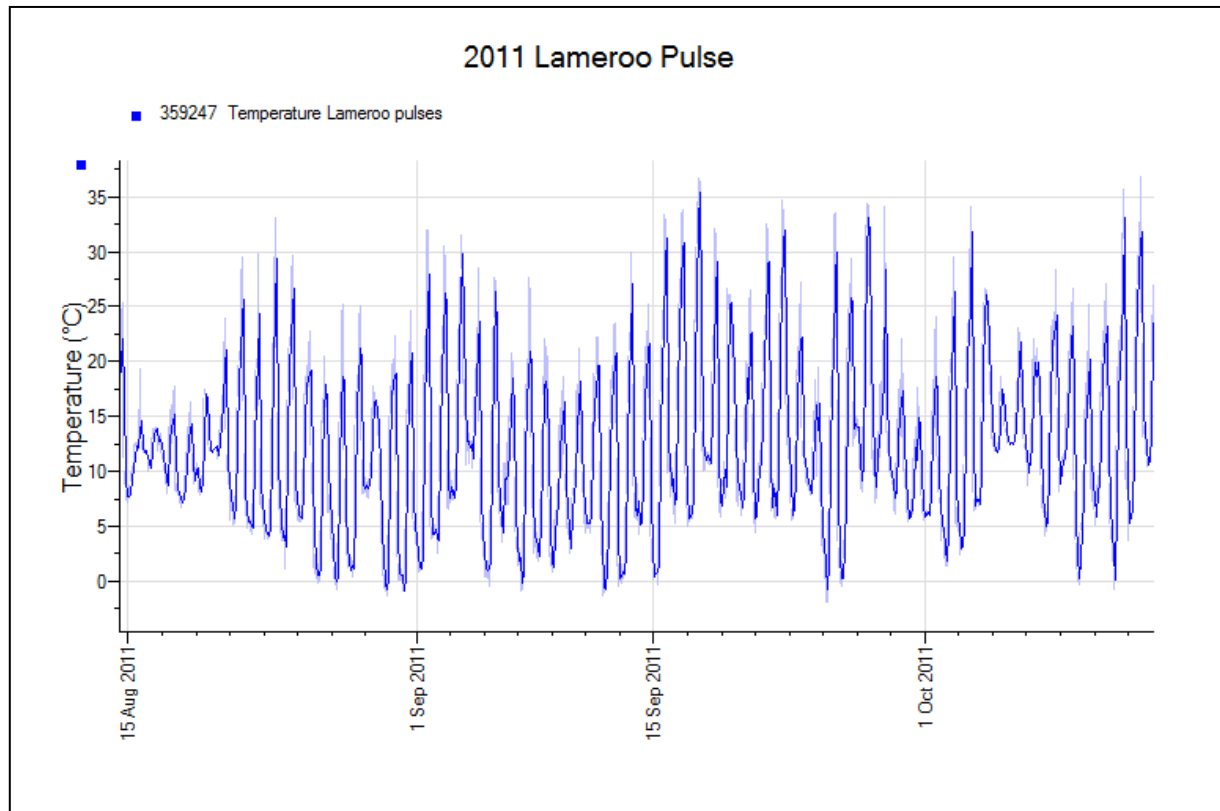
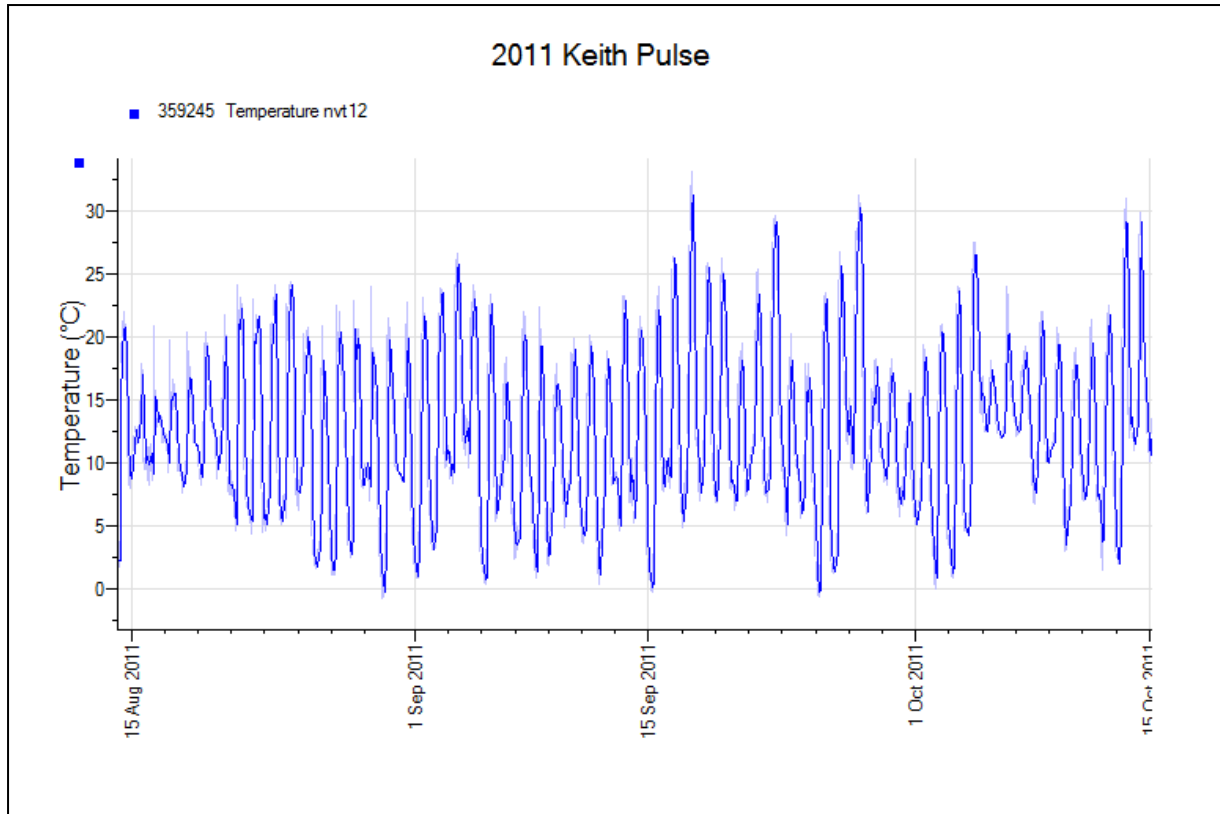


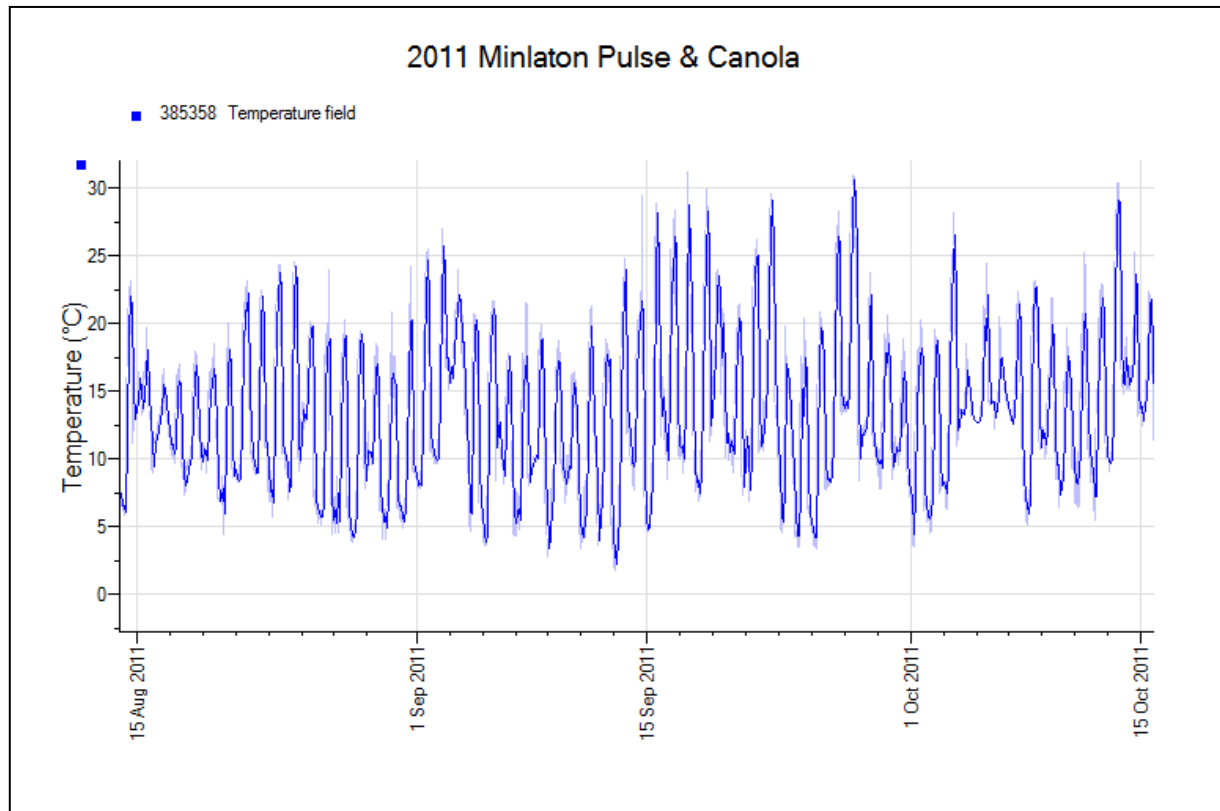
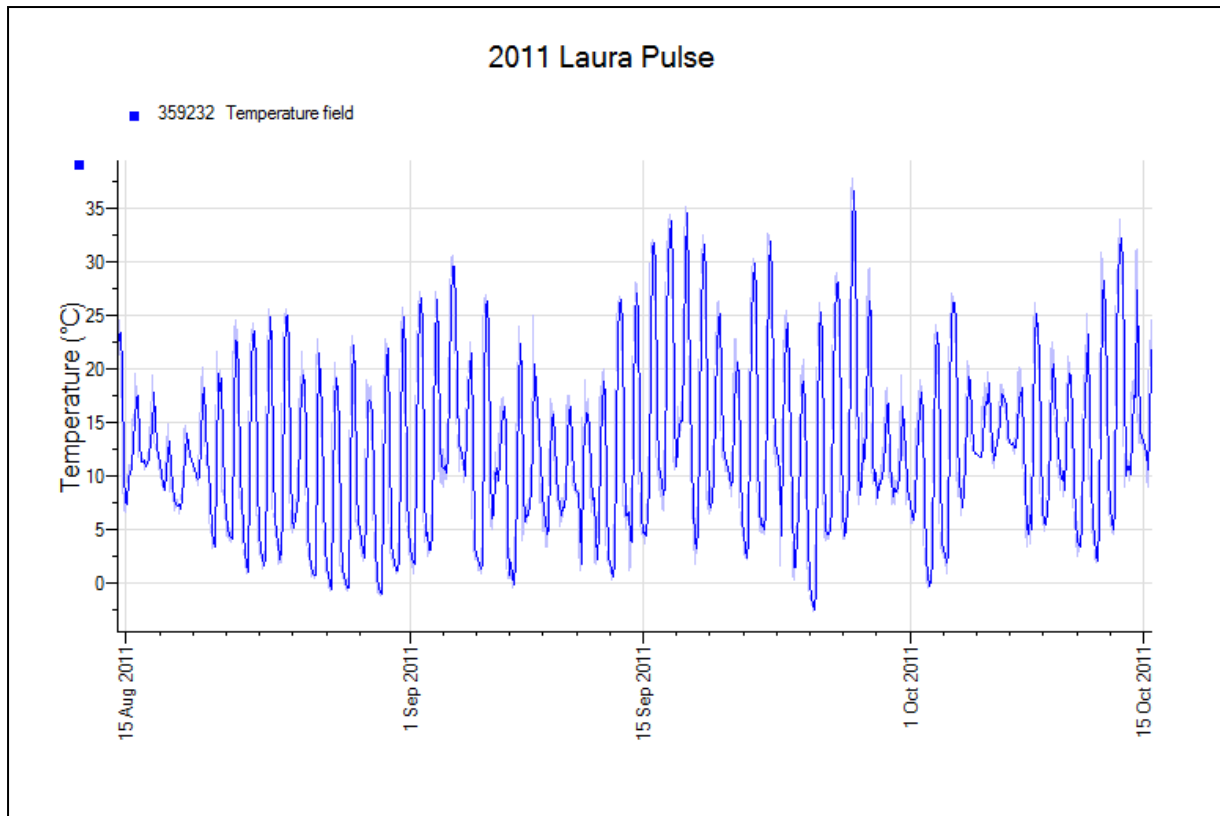
[Home](#)



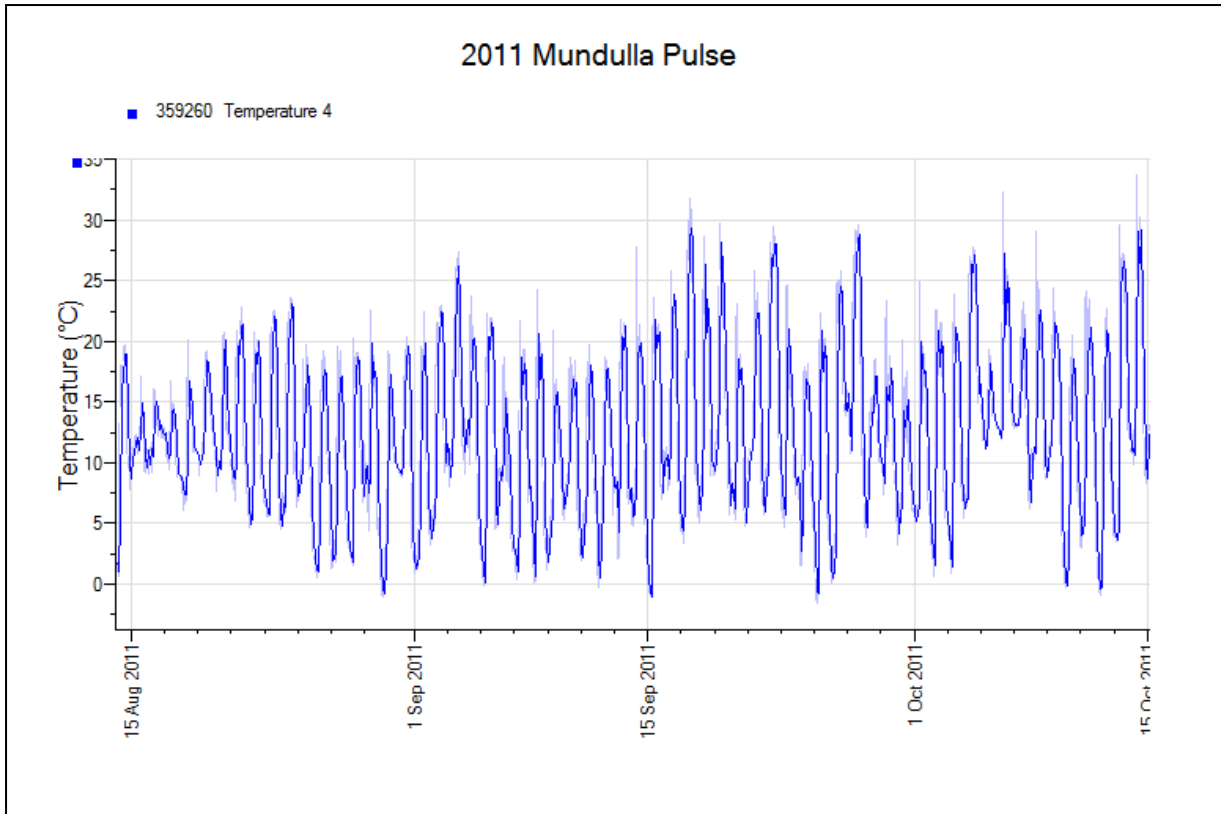
[Home](#)



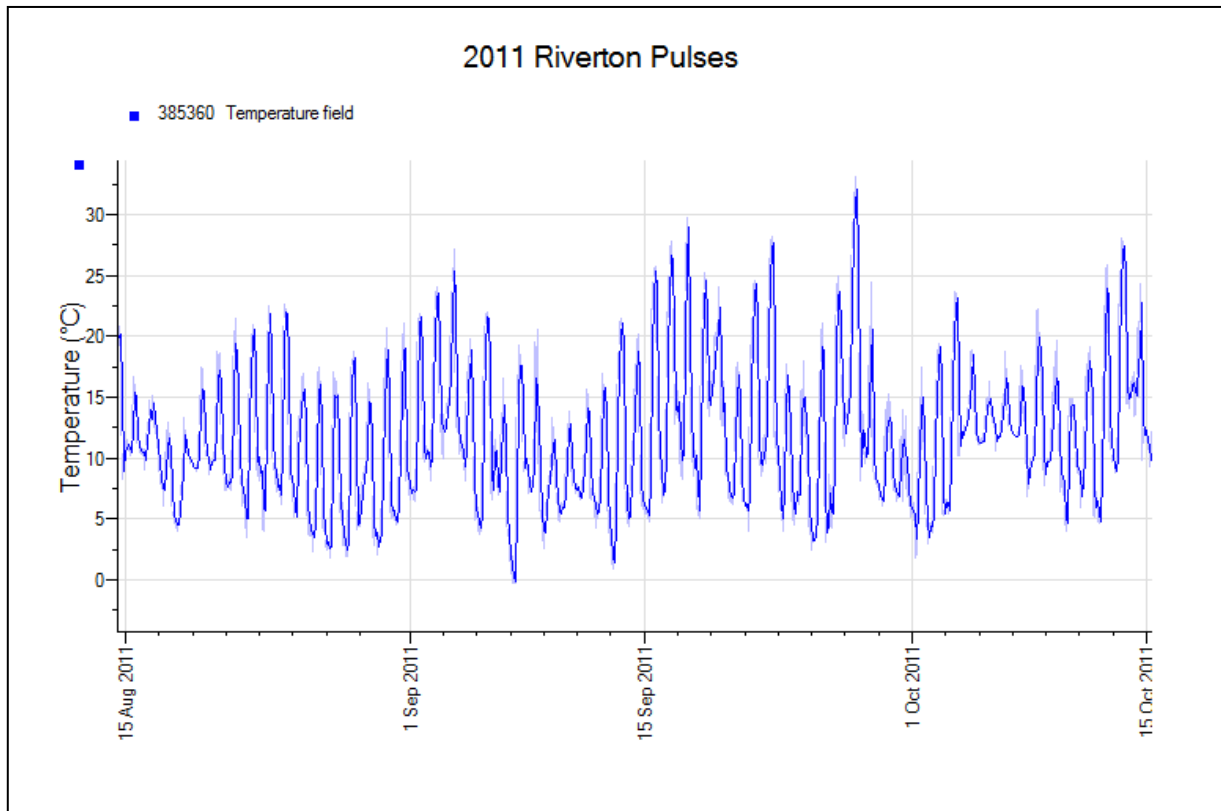




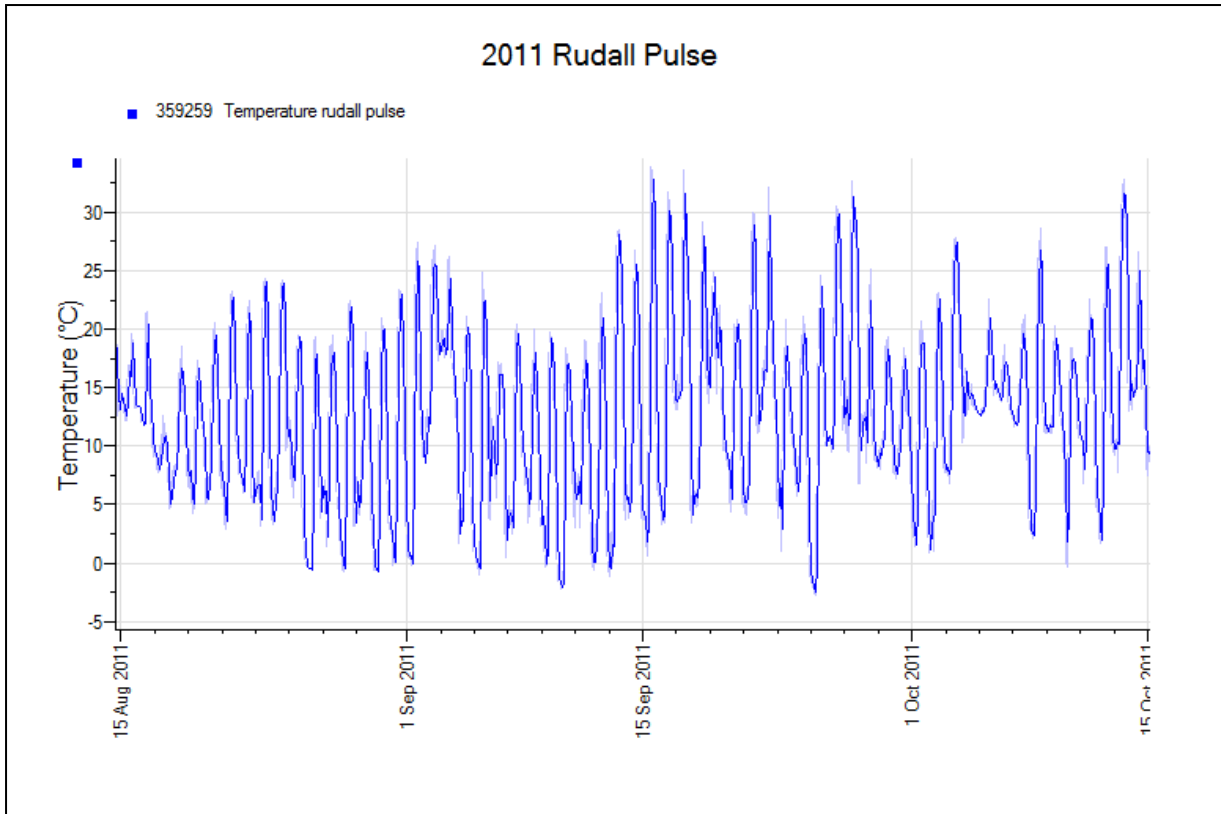
[Home](#)



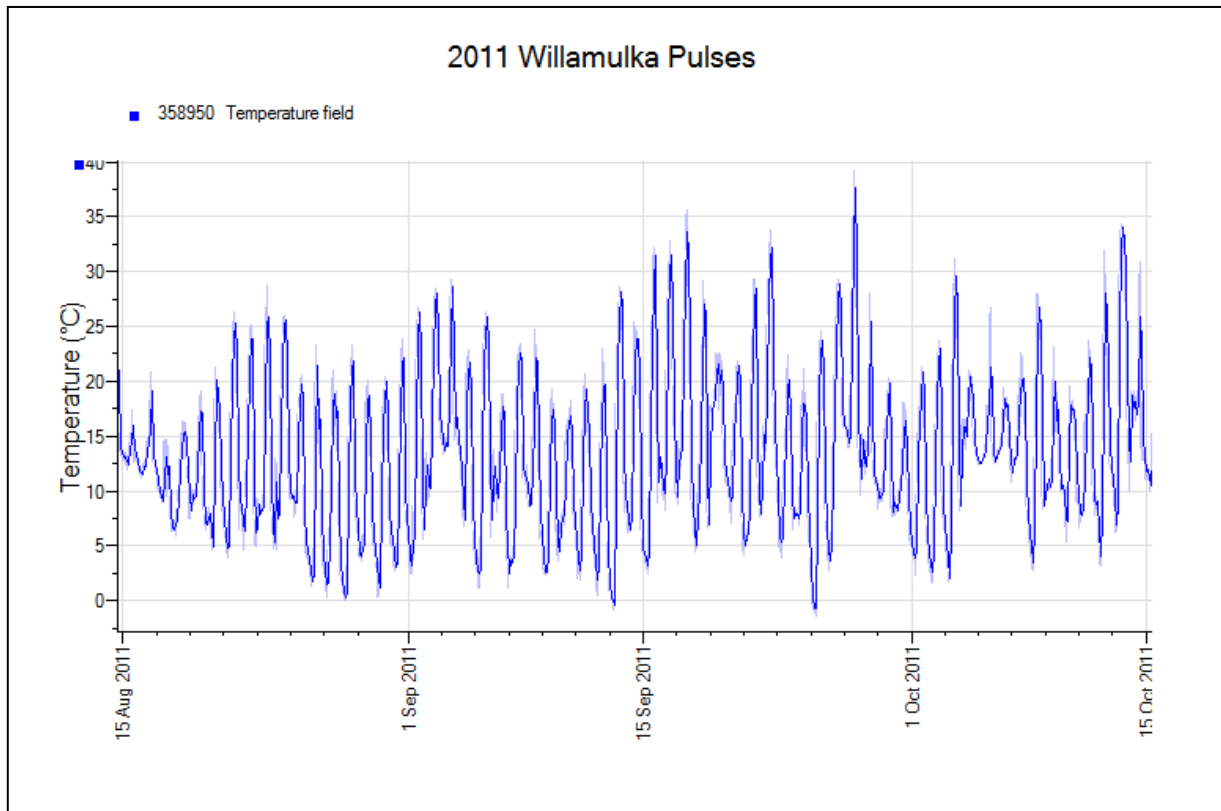
[Home](#)



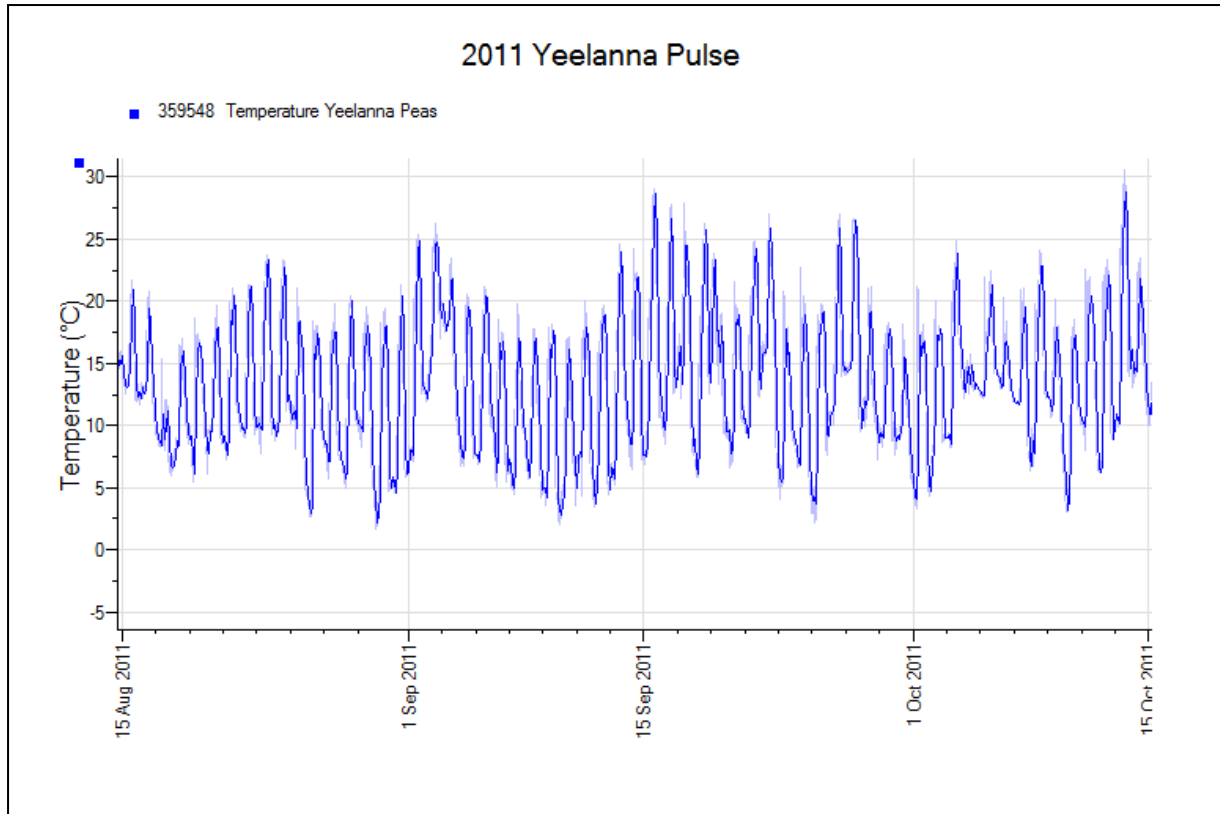
[Home](#)



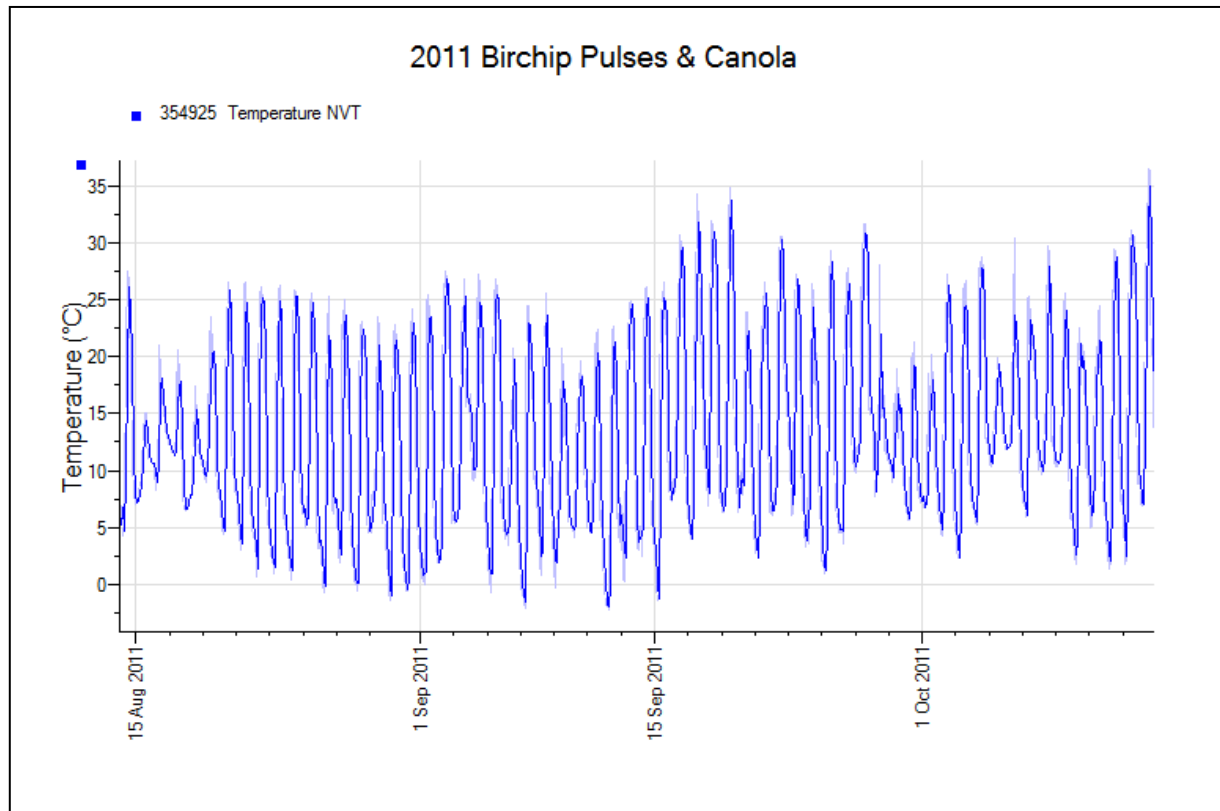
[Home](#)

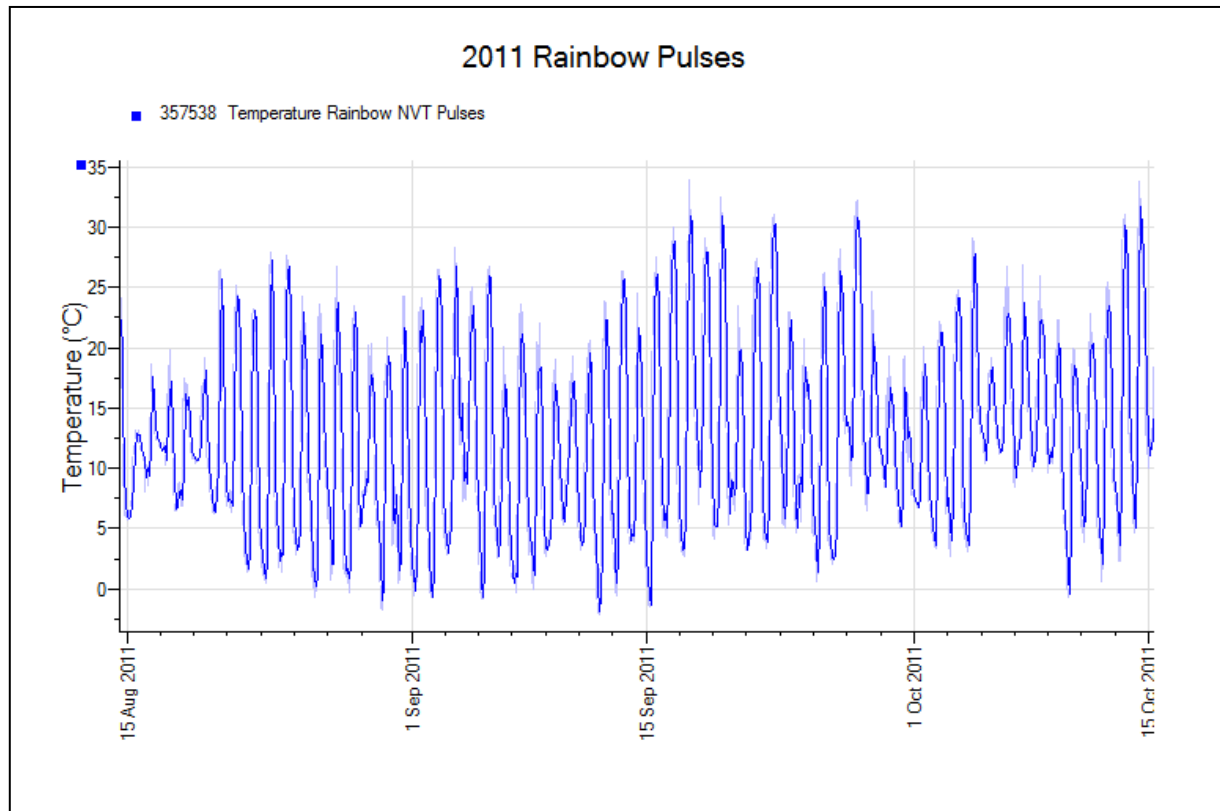
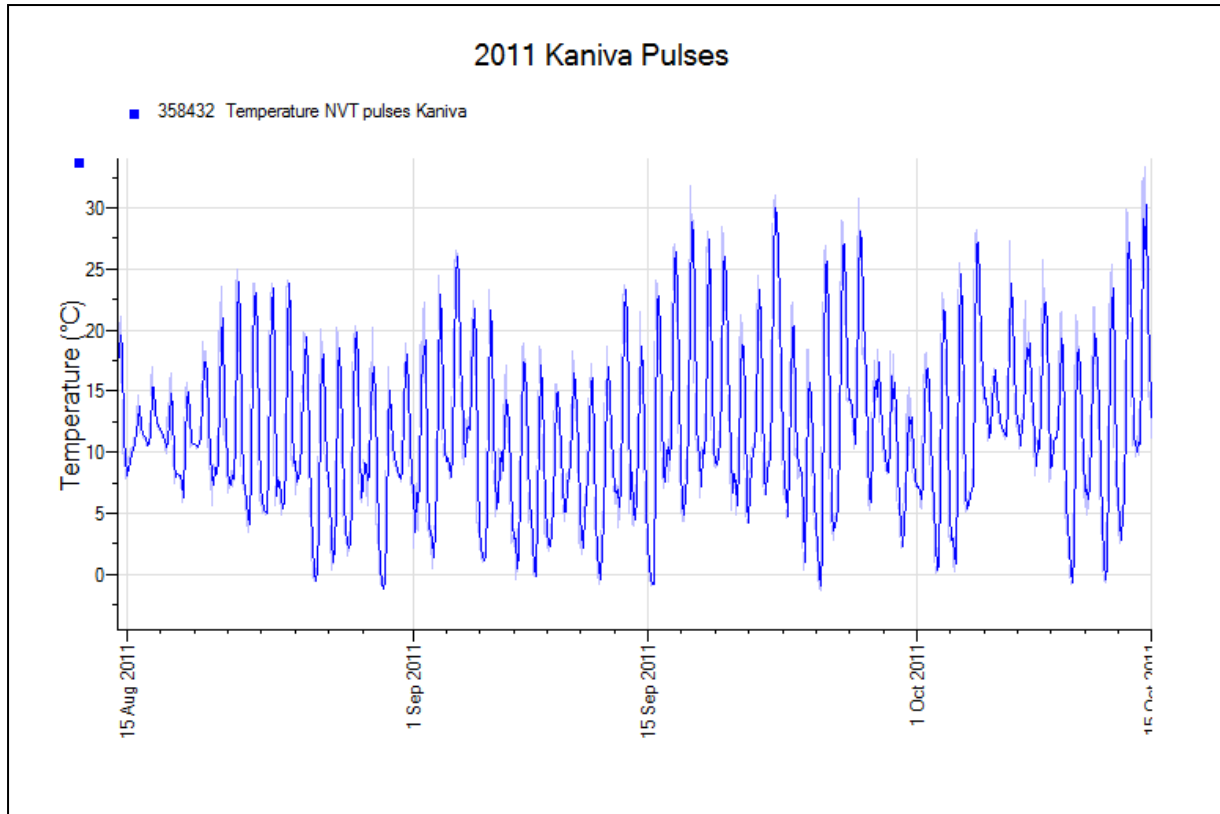


[Home](#)

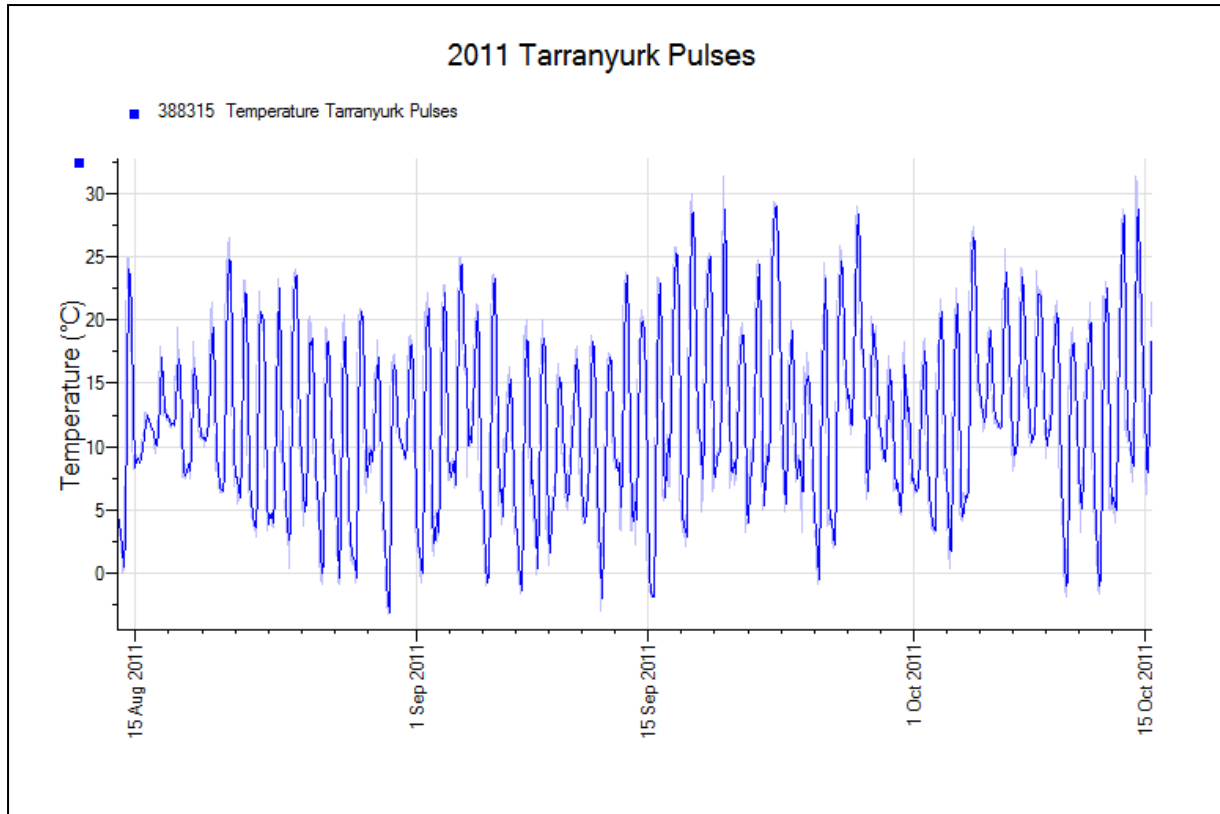


[Home](#)

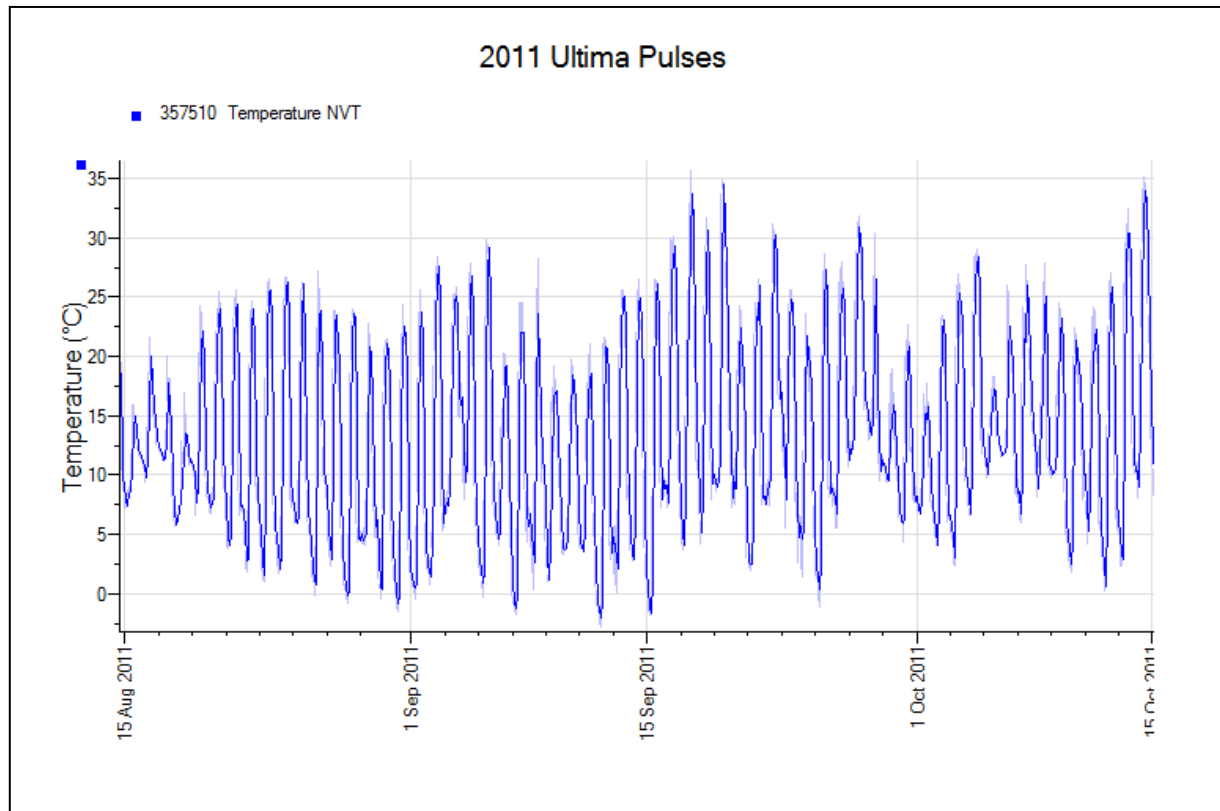




[Home](#)



[Home](#)



[Home](#)

Brookton Field Pea

No data at time of publication

[Home](#)

Coorow Field Pea

No data at time of publication

[Home](#)

Grass Patch Field Pea

No data at time of publication

[Home](#)

Holt Rock Field Pea

No data at time of publication

[Home](#)

Katanning Field Pea

No data at time of publication

[Home](#)

Lake Camm Field Pea

No data at time of publication

[Home](#)

Merredin Field Pea

No data at time of publication

[Home](#)

Mingenew Field Pea

No data at time of publication

[Home](#)

Muresk Field Pea

No data at time of publication

[Home](#)

Pingrup Field Pea

No data at time of publication

Wittenoom Hills Field Pea

No data at time of publication