

Introduction:

At most National Variety Trial sites there is a small device - a Tiny Tag - that is designed to capture the air temperature every 15 minutes throughout the growing season. This data can be used by NVT staff in determining the effect of temperature stresses on trials.

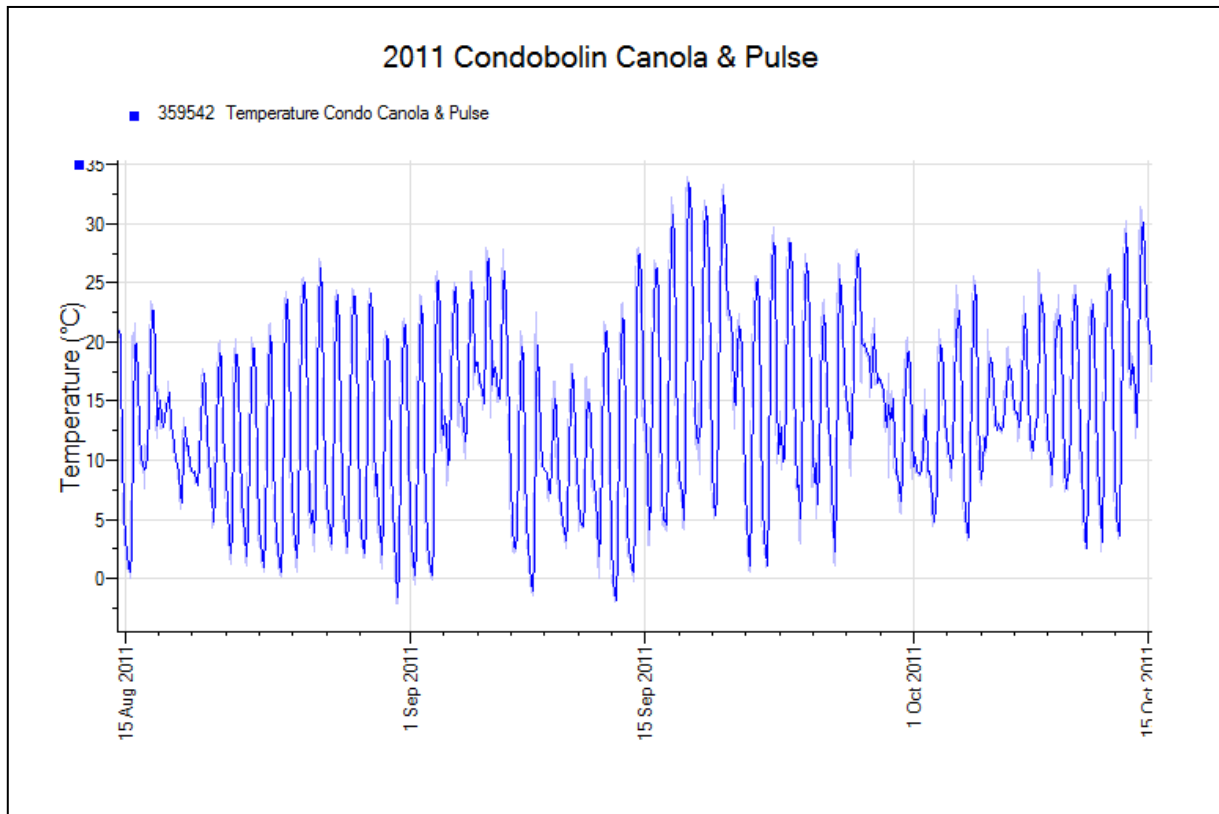
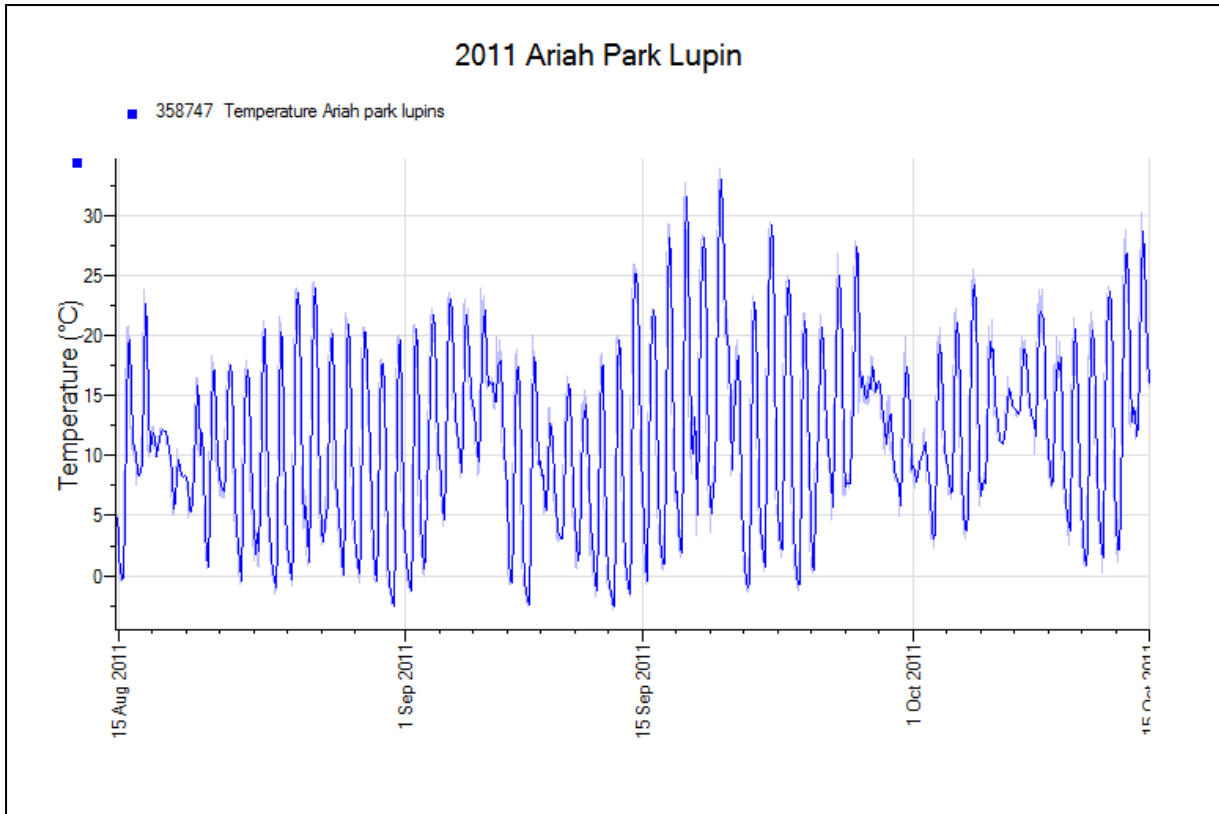
On the list of locations below, there are some that are shaded with a blue background. These locations have temperature data available. The remaining sites have no data available either because it has yet to be received, there was no Tiny Tag present at the site or the Tiny Tag malfunctioned.

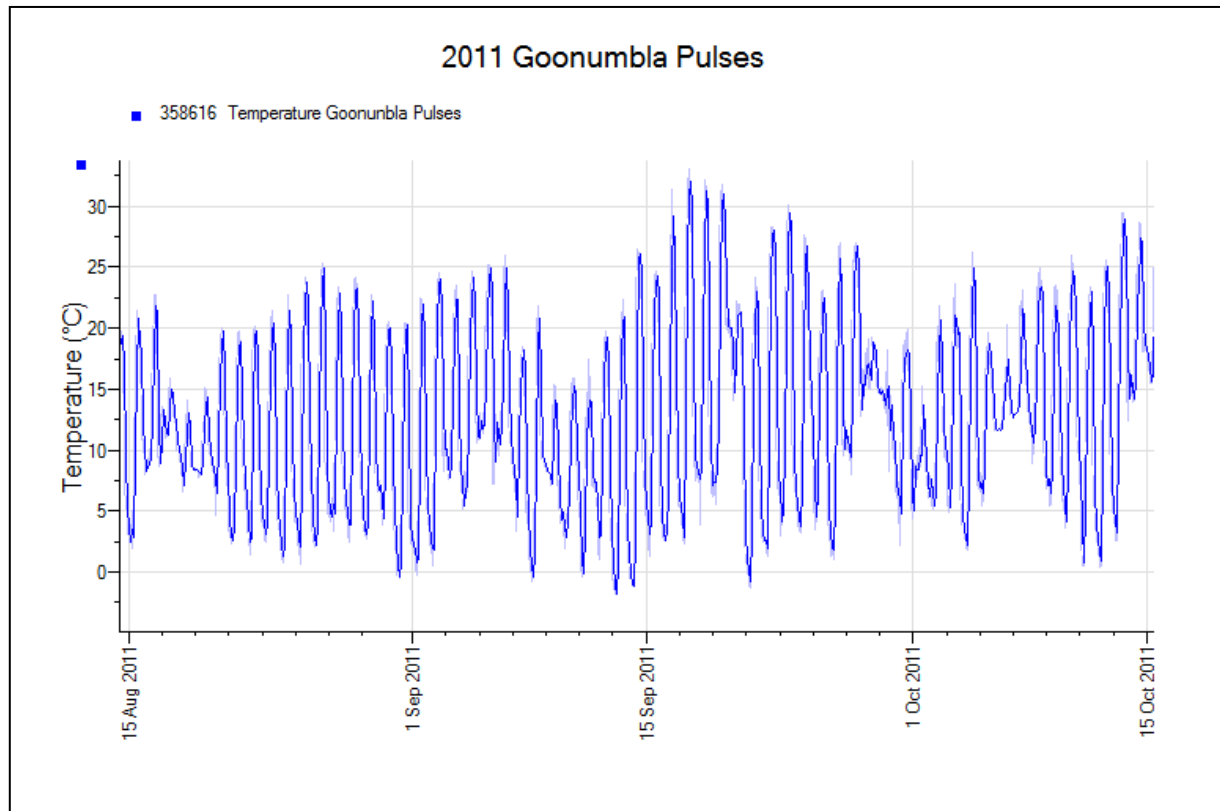
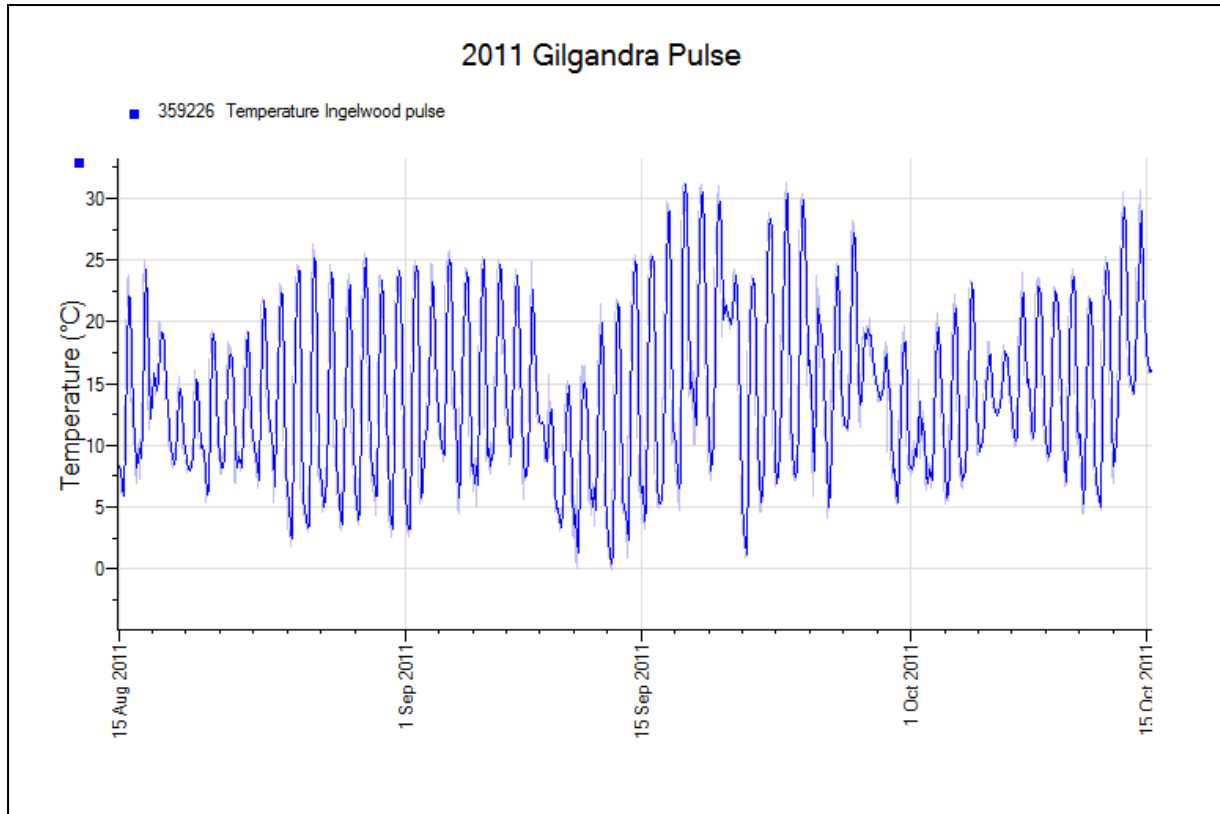
How to use this document:

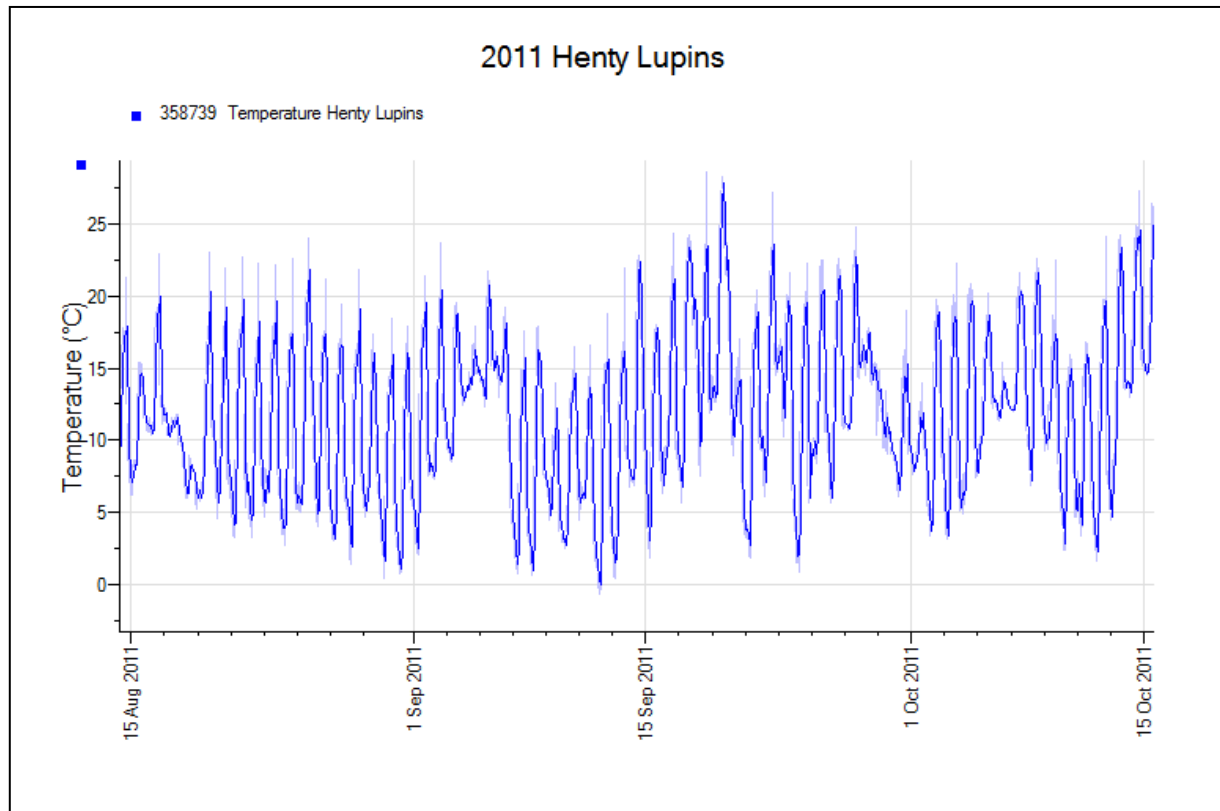
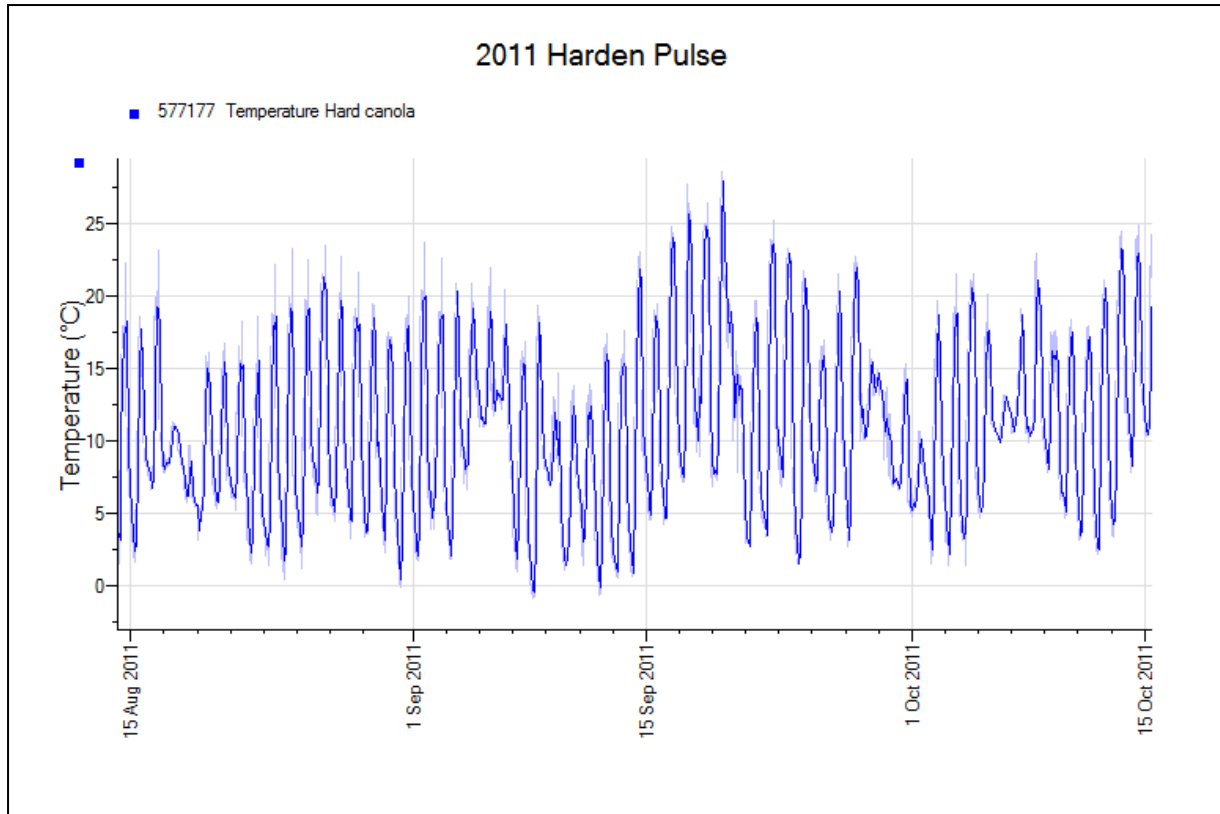
Click on the location name to view the graph. The text is hyperlinked to the page with the graph for that location. To return to the list and view another location's data, click [home](#) at the top right corner of the page to return to this page.

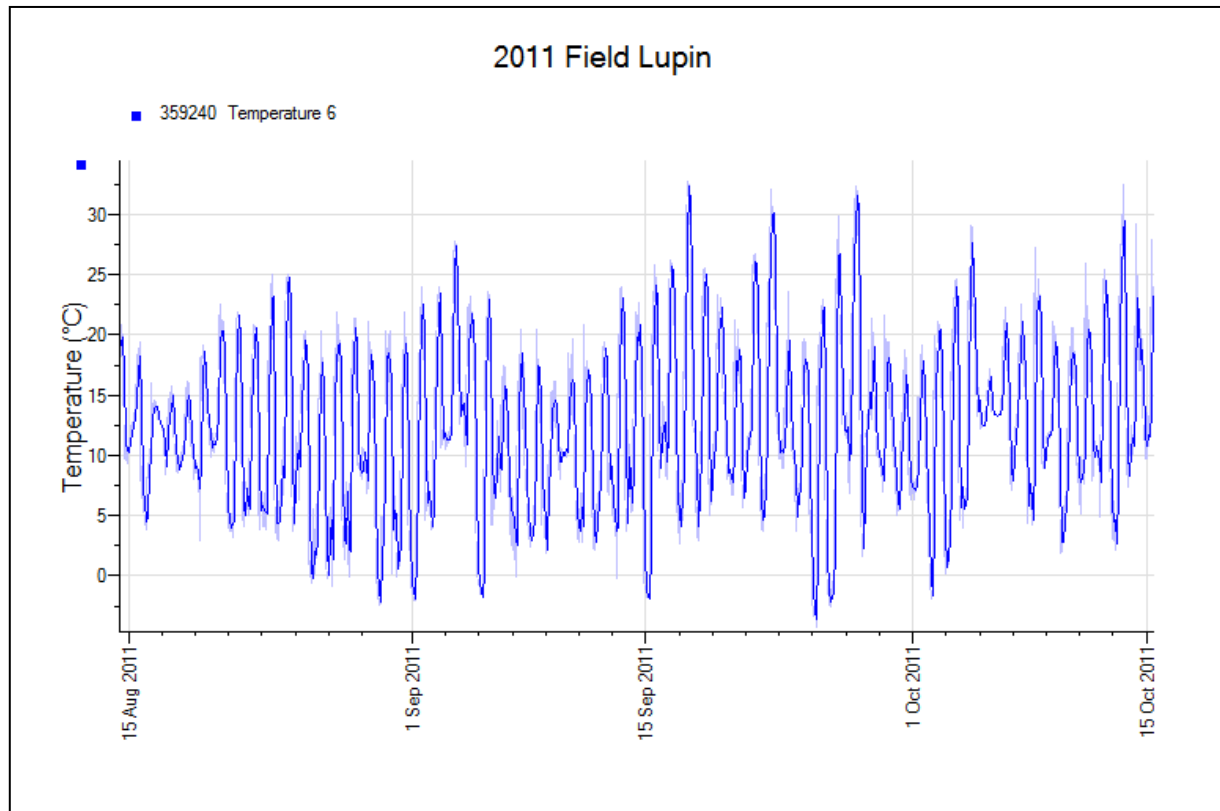
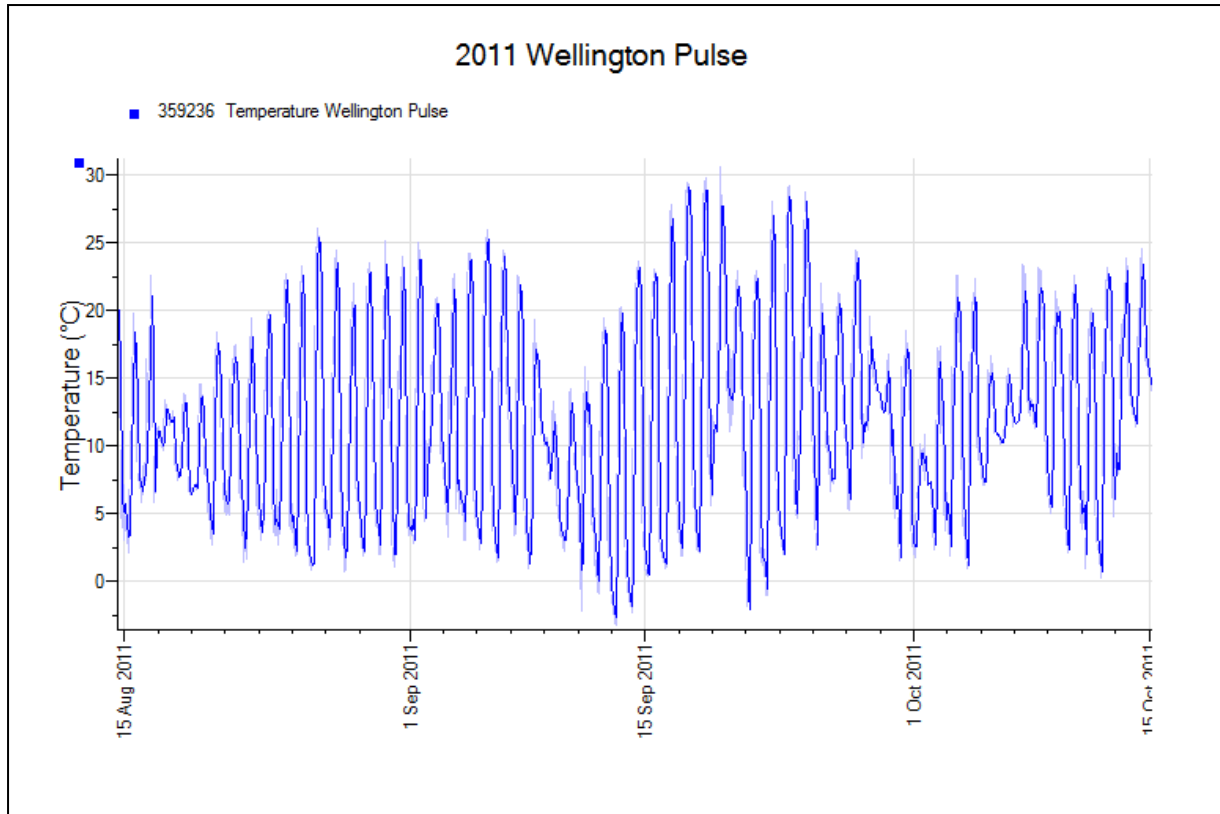
Trial Locations:

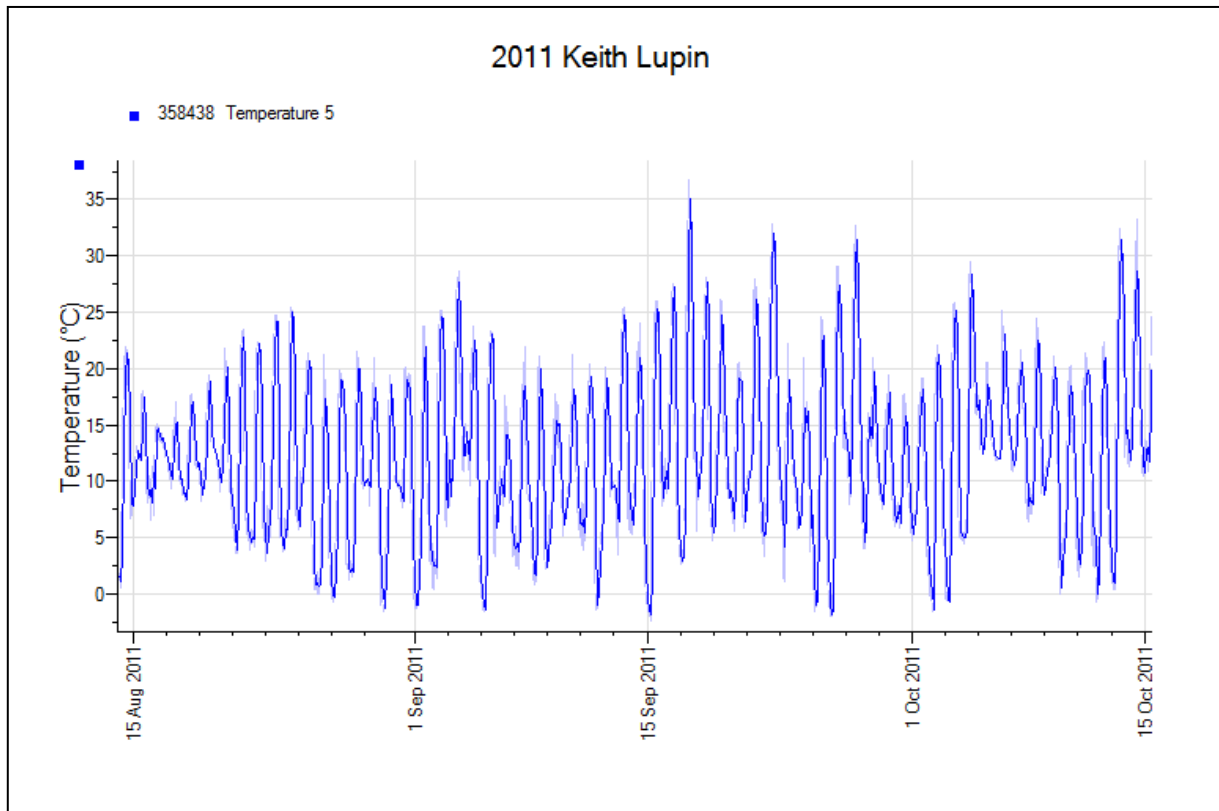
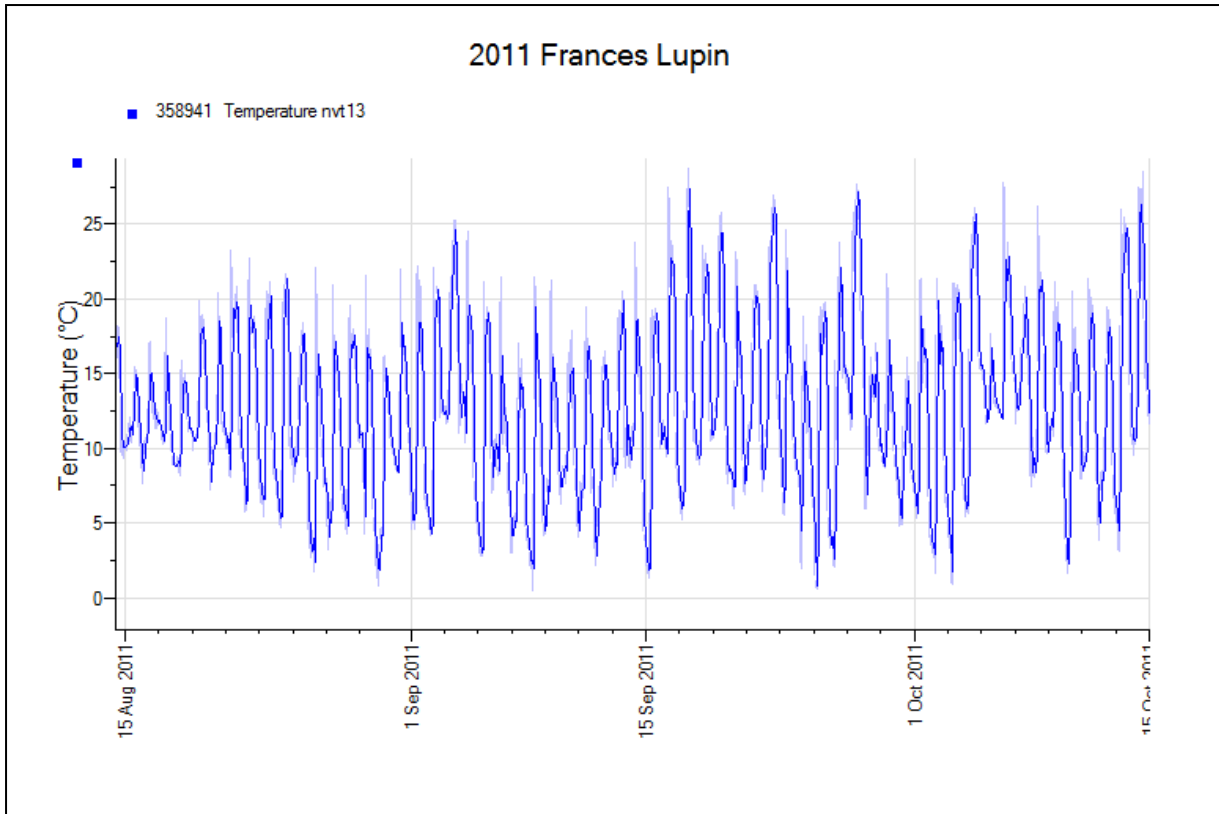
NSW	SA	VIC	WA
Ariah Park	Field	Diggora	Arthur River
Condobolin	Frances	Hopetoun	Badgingarra
Gilgandra	Keith	Walpeup	Binnu
Goonumbla	Lameroo		Coorow
Harden	Mundulla		Eradu
Henty	Spalding		Esperance
Wellington	Tooligie		Hyden
	Ungarra		Kalannie
			Katanning
			Merredin
			Mingenew
			Mullewa
			Newdegate
			Pingelly
			Walkaway
			Wongan Hills

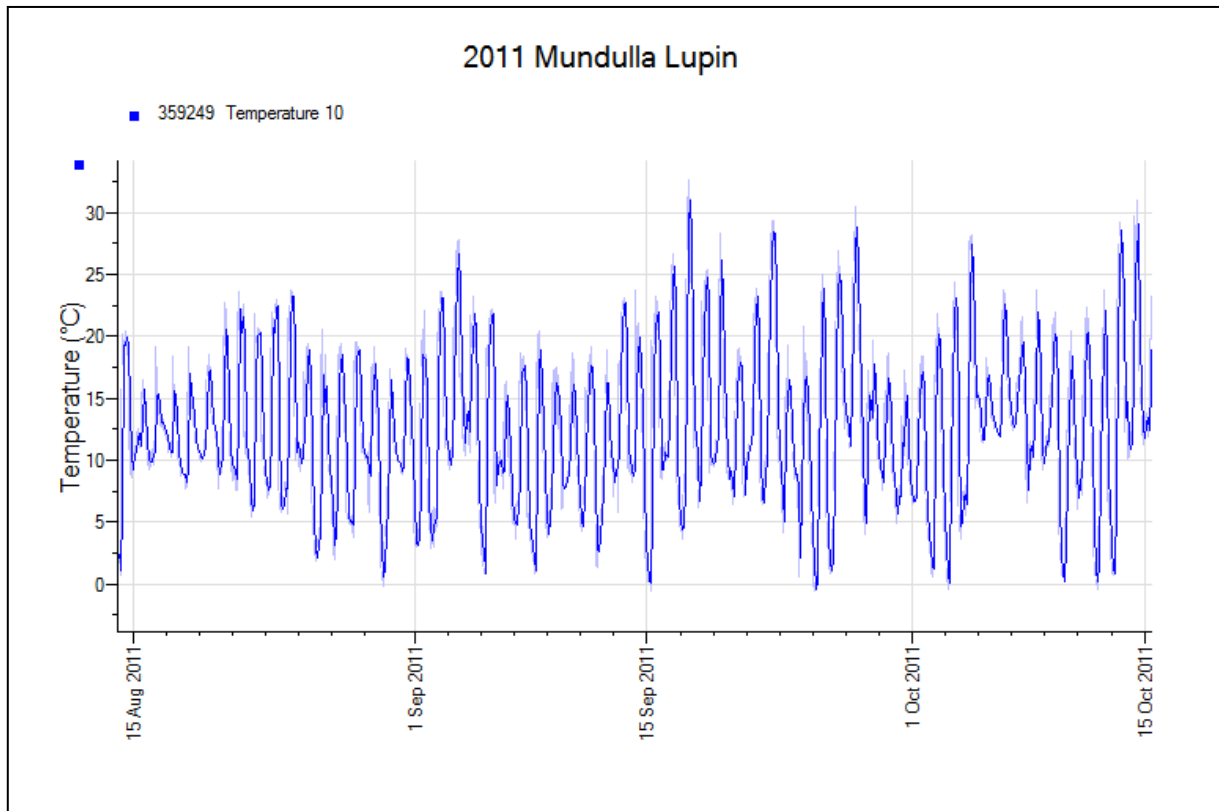
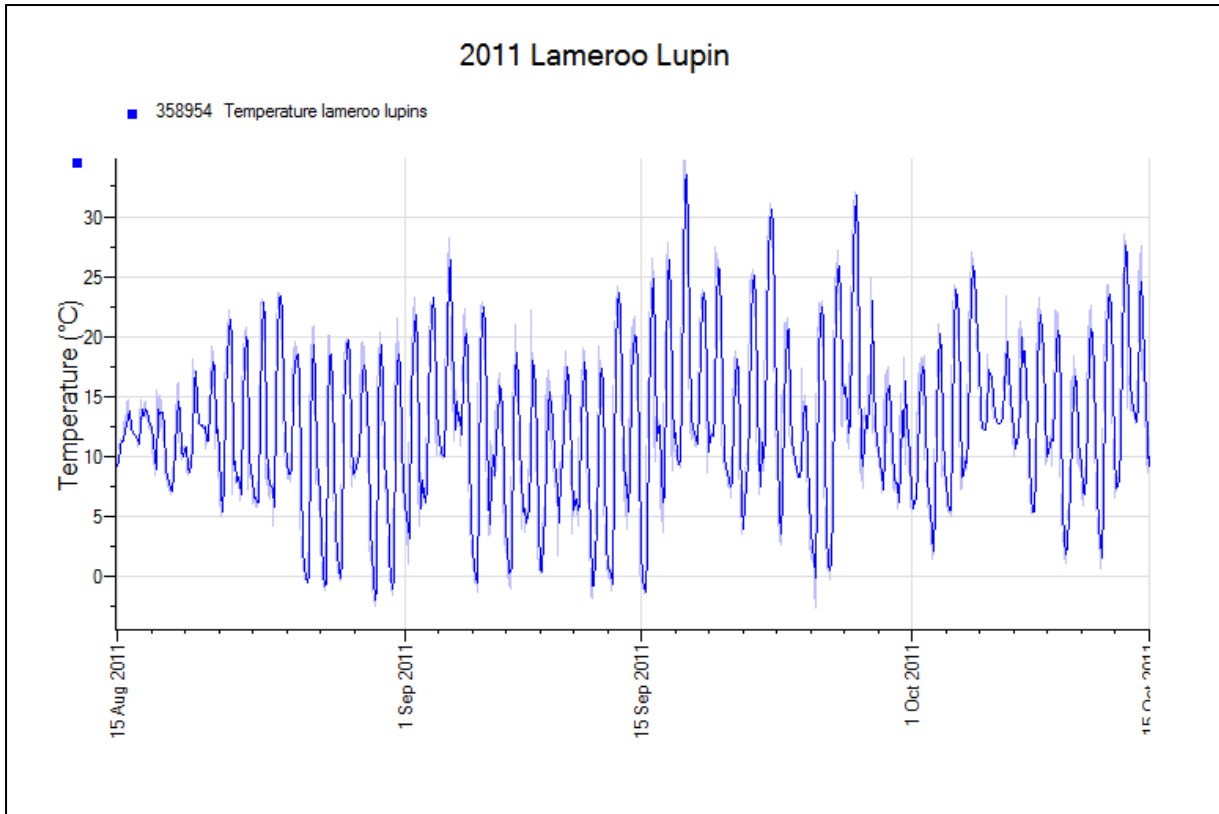


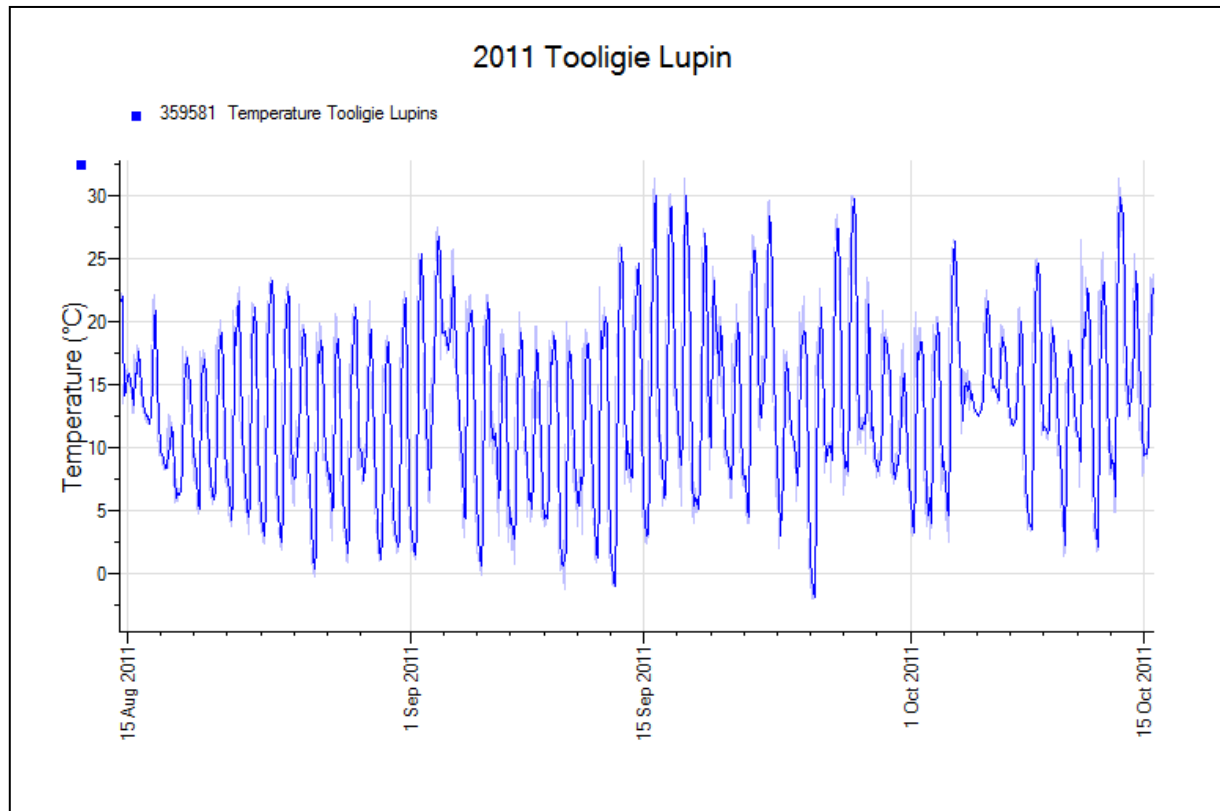
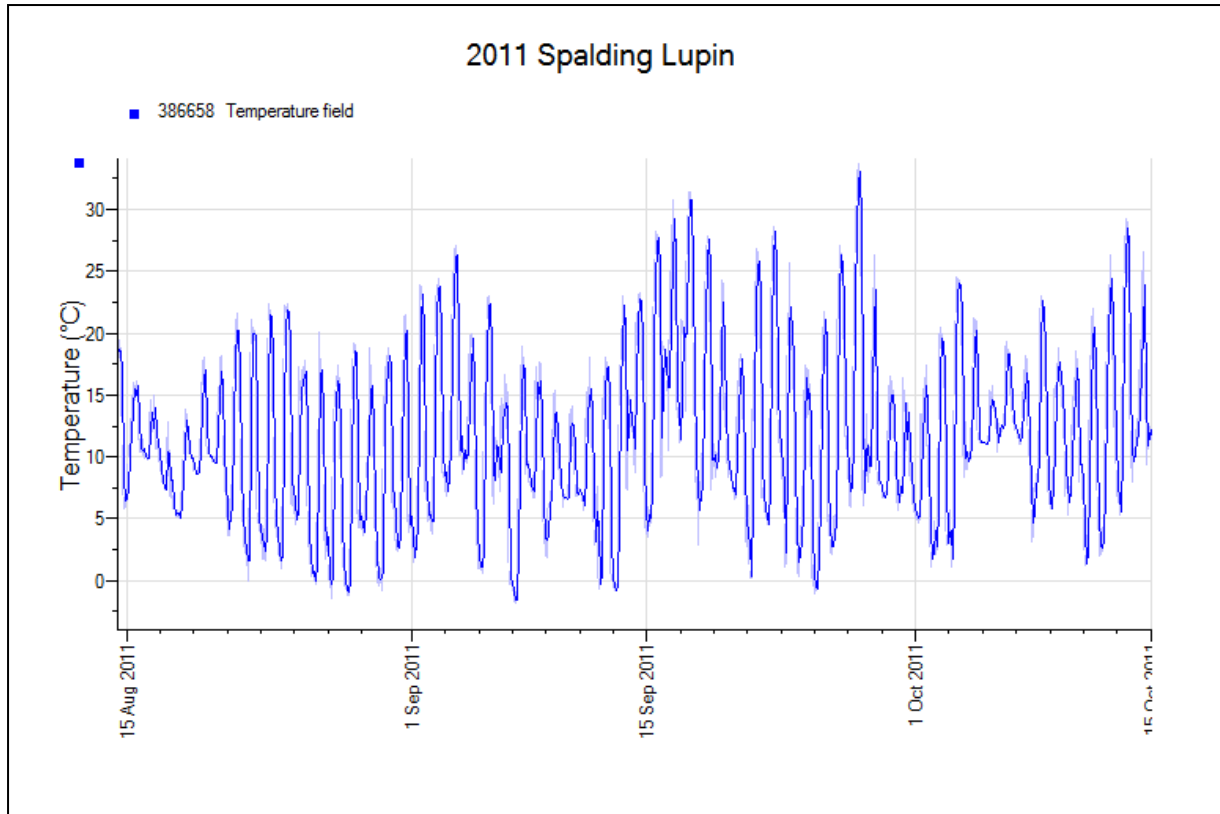


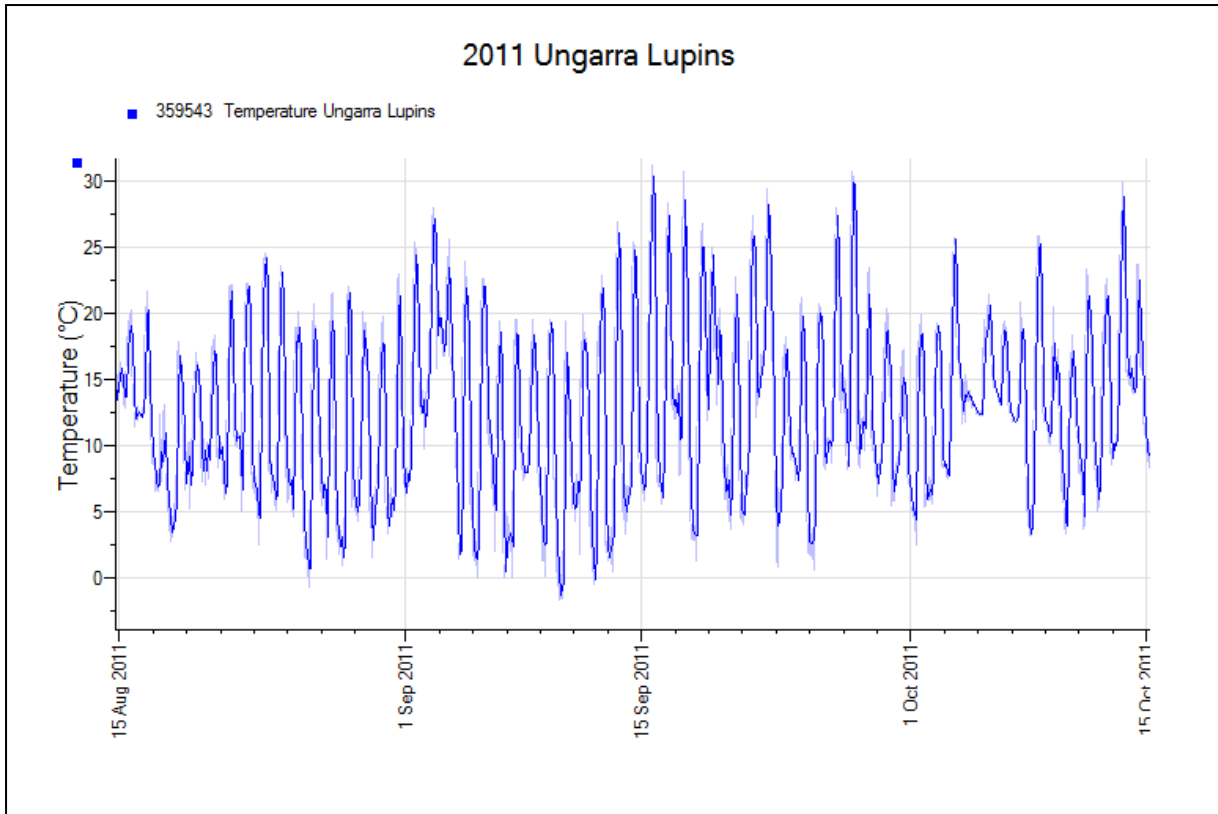






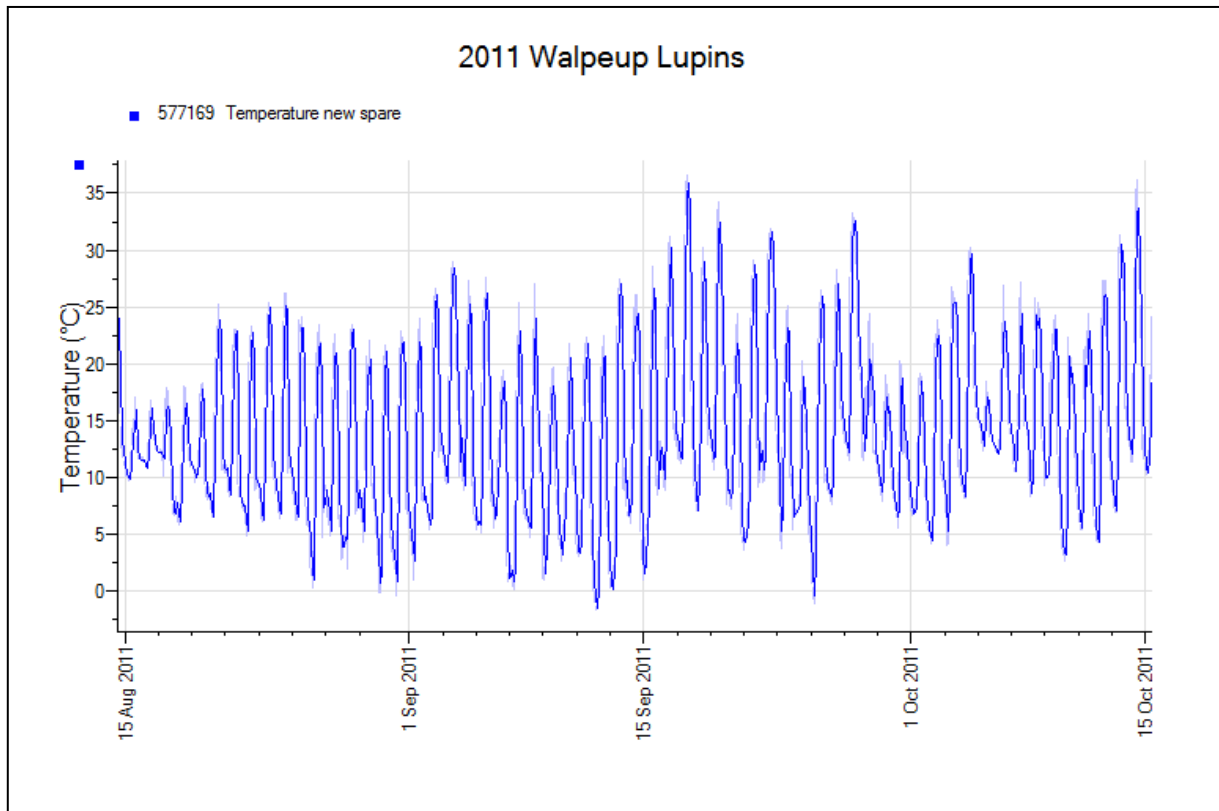
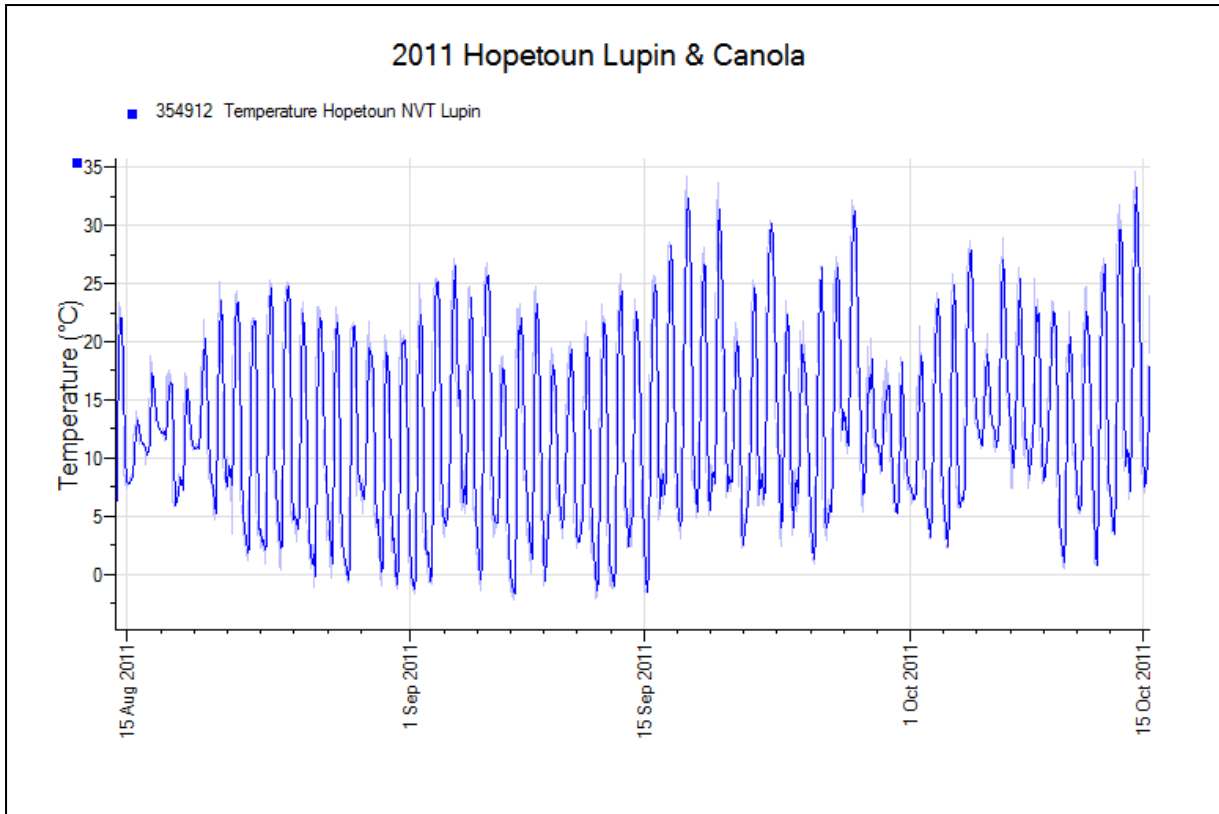






Diggera Lupin

No data at time of publication



[Home](#)

Arthur River Lupin

No data at time of publication

[Home](#)

Badgingarra Lupin

No data at time of publication

[Home](#)

Binnu Lupin

No data at time of publication

[Home](#)

Coorow Lupin

No data at time of publication

[Home](#)

Eradu Lupin

No data at time of publication

[Home](#)

Esperance Lupin

No data at time of publication

[Home](#)

Hyden Lupin

No data at time of publication

[Home](#)

Kalannie Lupin

No data at time of publication

[Home](#)

Katanning Lupin

No data at time of publication

[Home](#)

Merredin Lupin

No data at time of publication

[Home](#)

Mingenew Lupin

No data at time of publication

[Home](#)

Mullewa Lupin

No data at time of publication

[Home](#)

Newdegate Lupin

No data at time of publication

[Home](#)

Pingelly Lupin

No data at time of publication

[Home](#)

Walkaway Lupin

No data at time of publication

[Home](#)

Wongan Hills Lupin

No data at time of publication