

Introduction:

At most National Variety Trial sites there is a small device - a Tiny Tag - that is designed to capture the air temperature every 15 minutes throughout the growing season. This data can be used by NVT staff in determining the effect of temperature stresses on trials.

On the list of locations below, there are some that are shaded with a blue background. These locations have temperature data available. The remaining sites have no data available either because it has yet to be received, there was no Tiny Tag present at the site or the Tiny Tag malfunctioned.

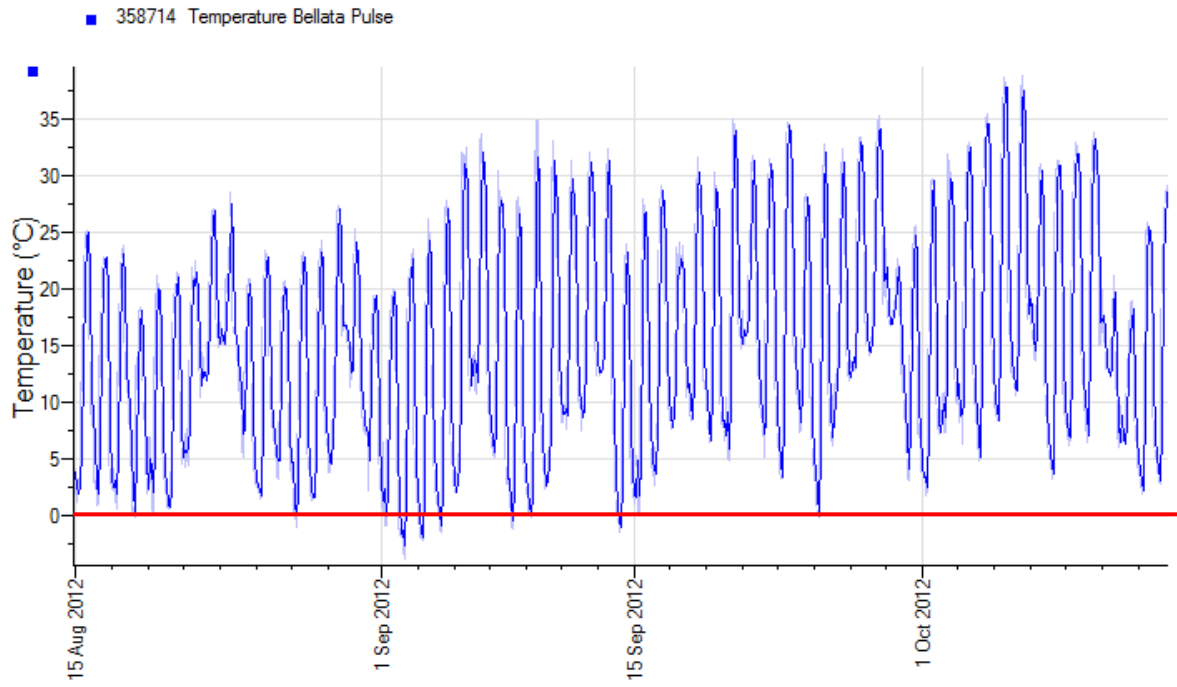
How to use this document:

Click on the location name to view the graph. The text is hyperlinked to the page with the graph for that location. To return to the list and view another location's data, click **home** at the top right corner of the page to return to this page.

Trial Locations:

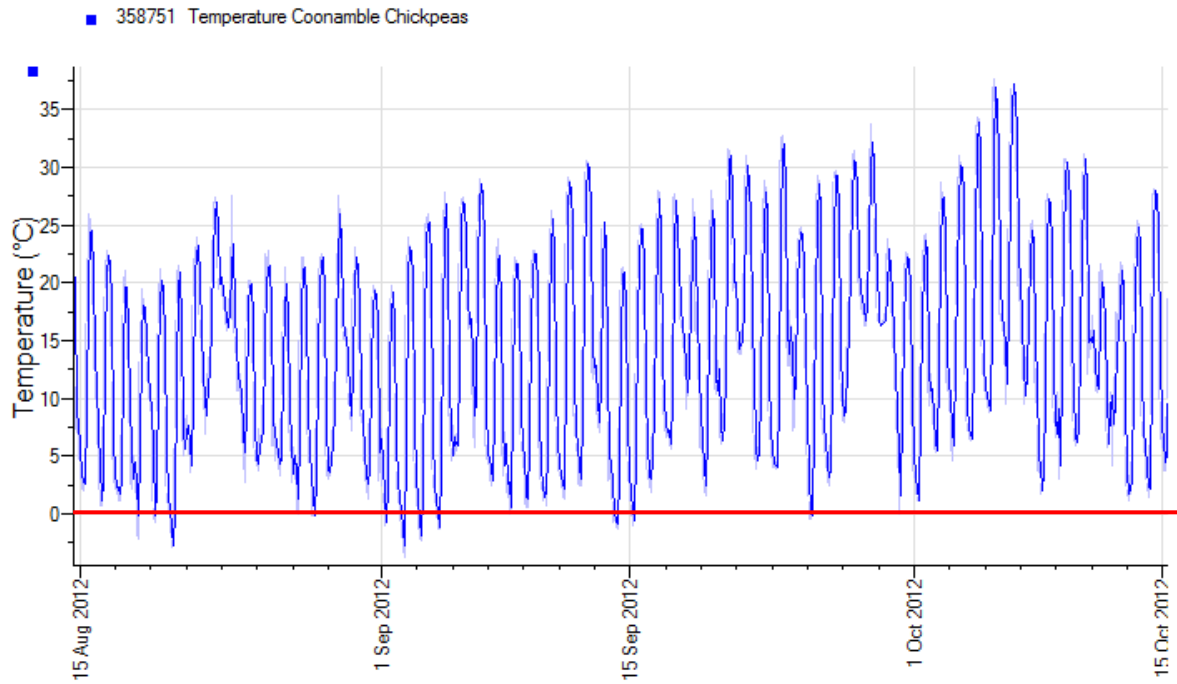
NSW	QLD	SA	VIC	WA
Bellata	Billa Billa	Balaklava	Beulah	Dalwallinu
Bullarah	Brookstead	Melton	Birchip	Merredin
Coonamble	Capella	Minlaton	Horsham	Mingenew
Edgeroi	Hermitage	Mundulla	Kaniva	Mullewa
Moree	Mungindi	Riverton	Minyip	Wongan Hills
Trangie	Roma	Rudall	Rainbow	York
Tulloona	Springsure	Yeelanna	Tarranyurk	
Wagga Wagga	Westmar		Ultima	
Walgett				
Yenda				

2012 Bellata Pulse



Bullarah Chickpea – Data not available at time of publication

2012 Coonamble Chickpeas



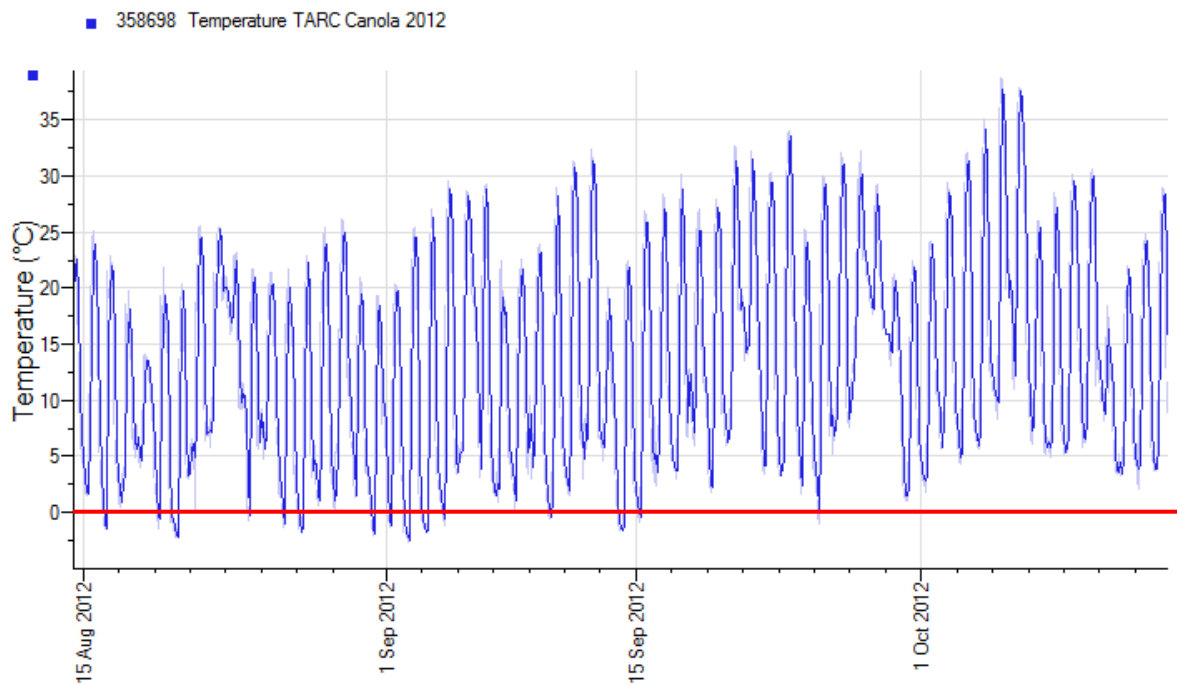
Edgeroi Chickpea – Data not available at time of publication

[Home](#)

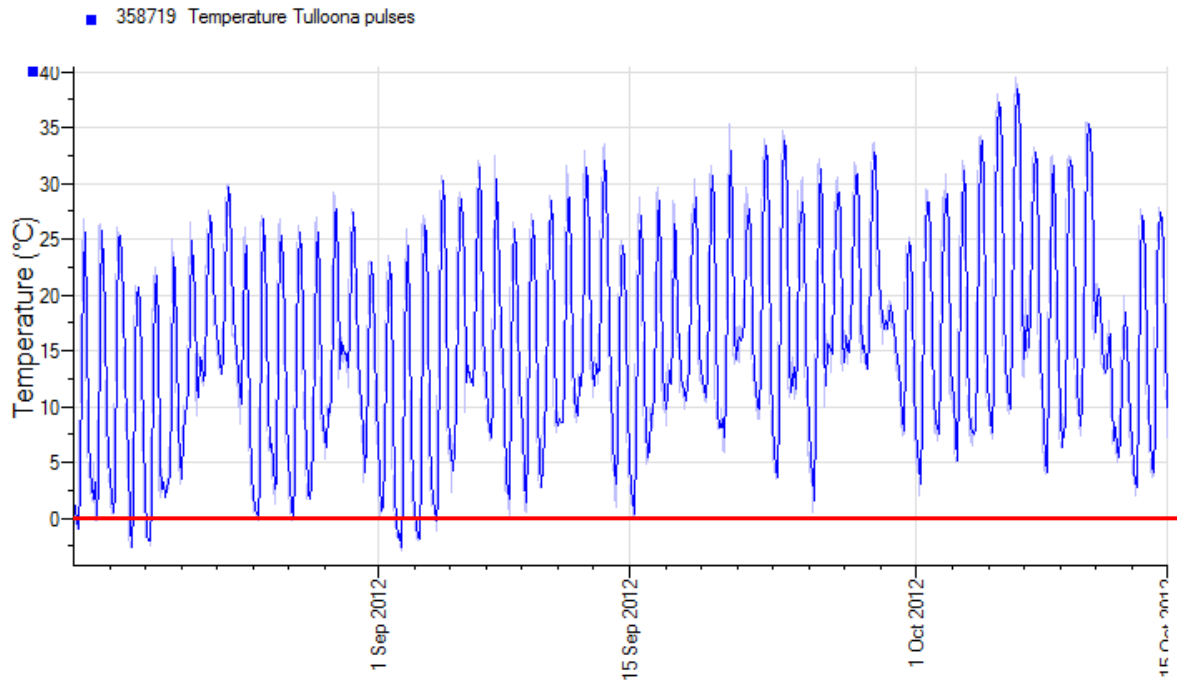
Moree Chickpea – Data not available at time of publication

[Home](#)

2012 Trangie Canola & Pulse

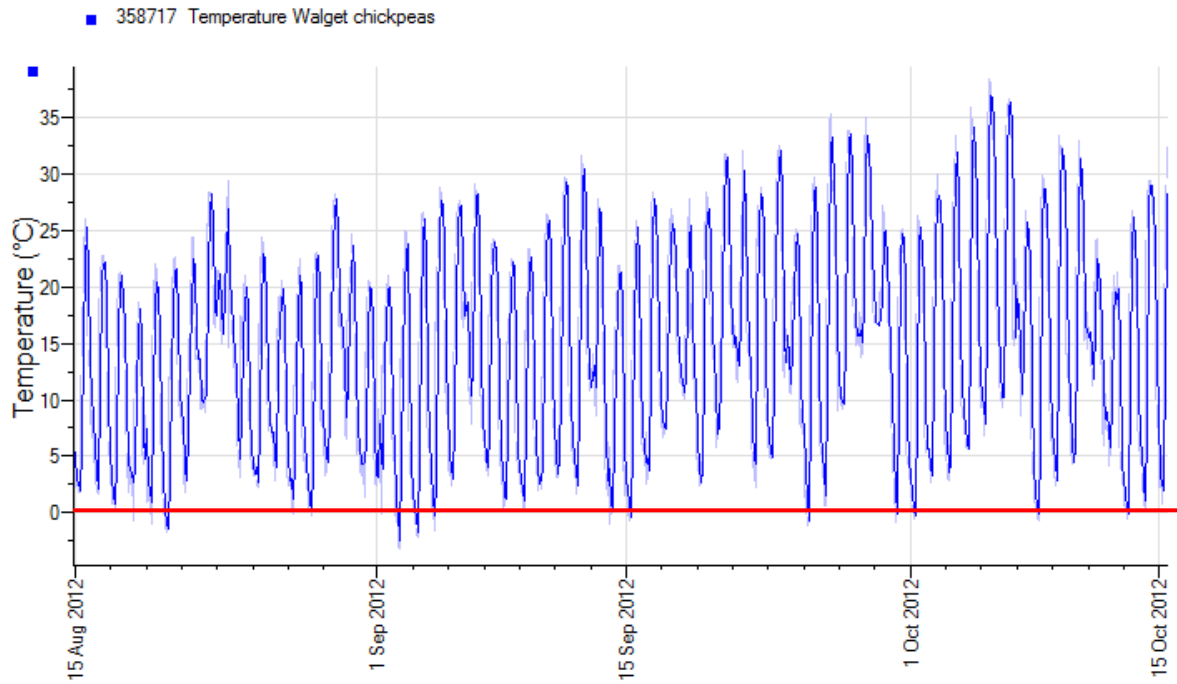


2012 Tulloona Pulses



Wagga Wagga Chickpea – Data not available at time of publication

2012 Walgett Chickpeas



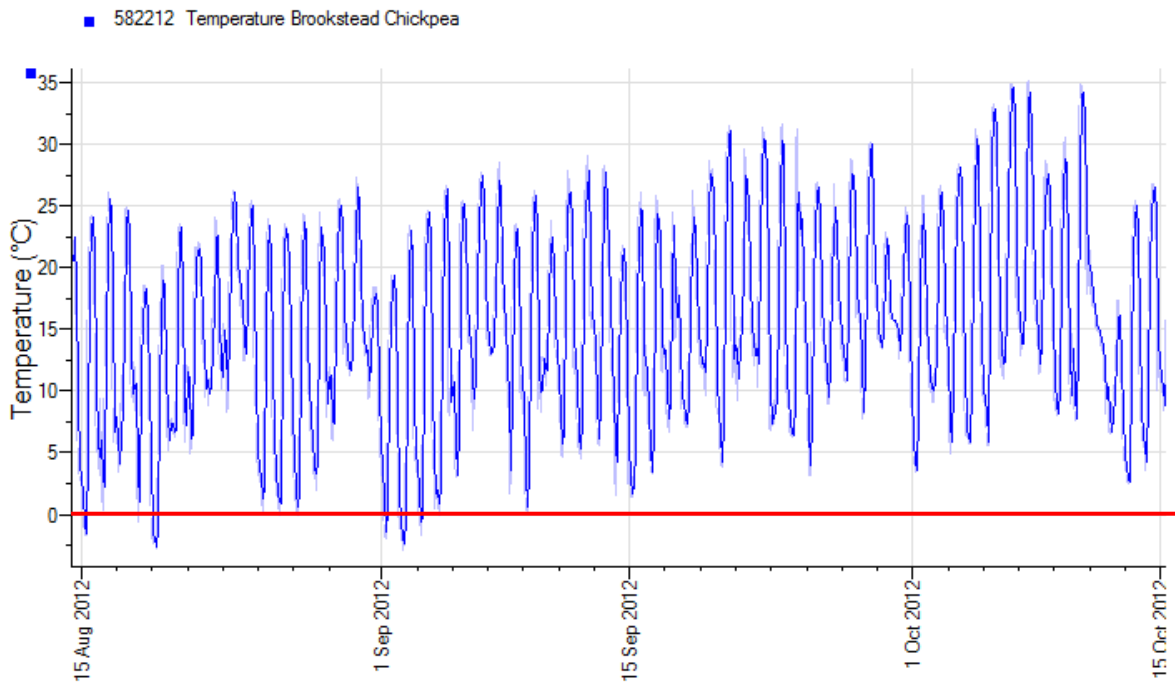
Yenda Chickpea – Data not available at time of publication

[Home](#)

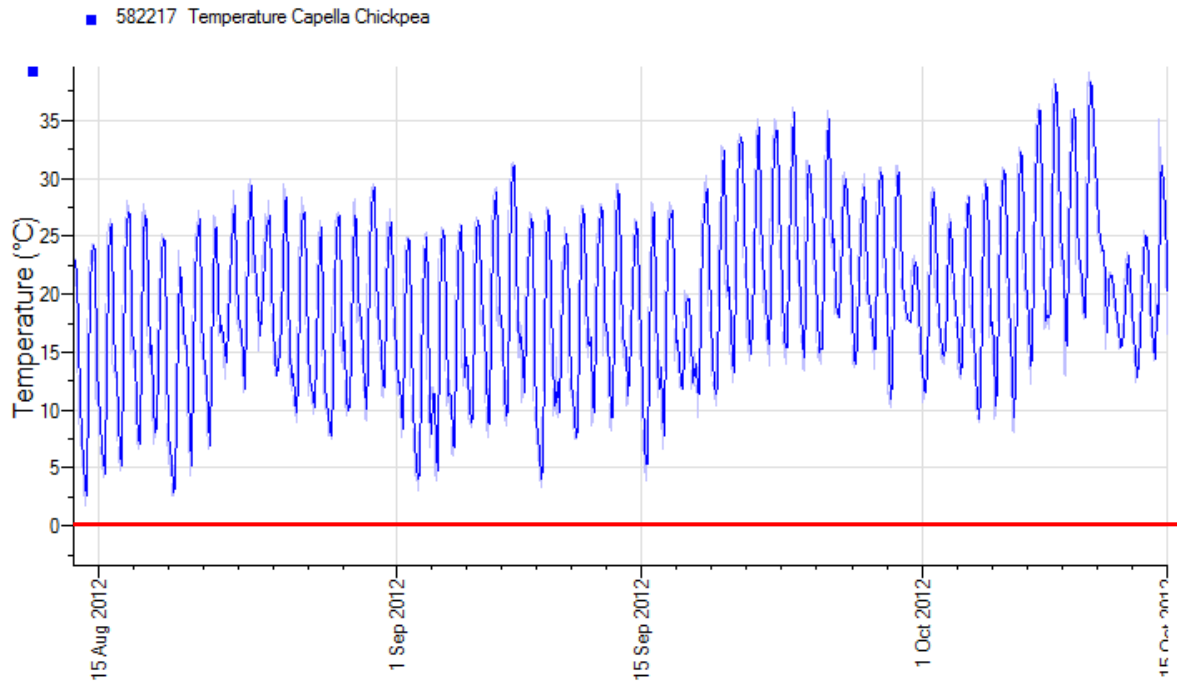
Billa Billa Chickpea – Data not available at time of publication

[Home](#)

2012 Brookstead Chickpea

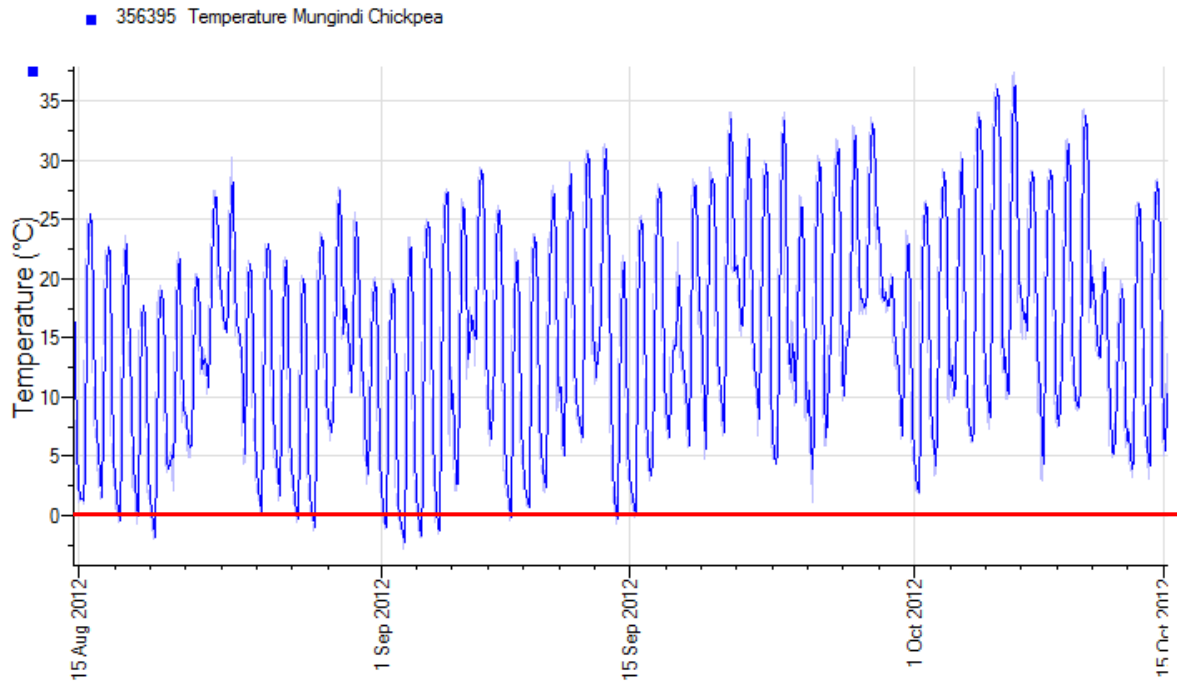


2012 Capella Chickpea



Hermitage Chickpea – Data not available at time of publication

2012 Mungindi Chickpea



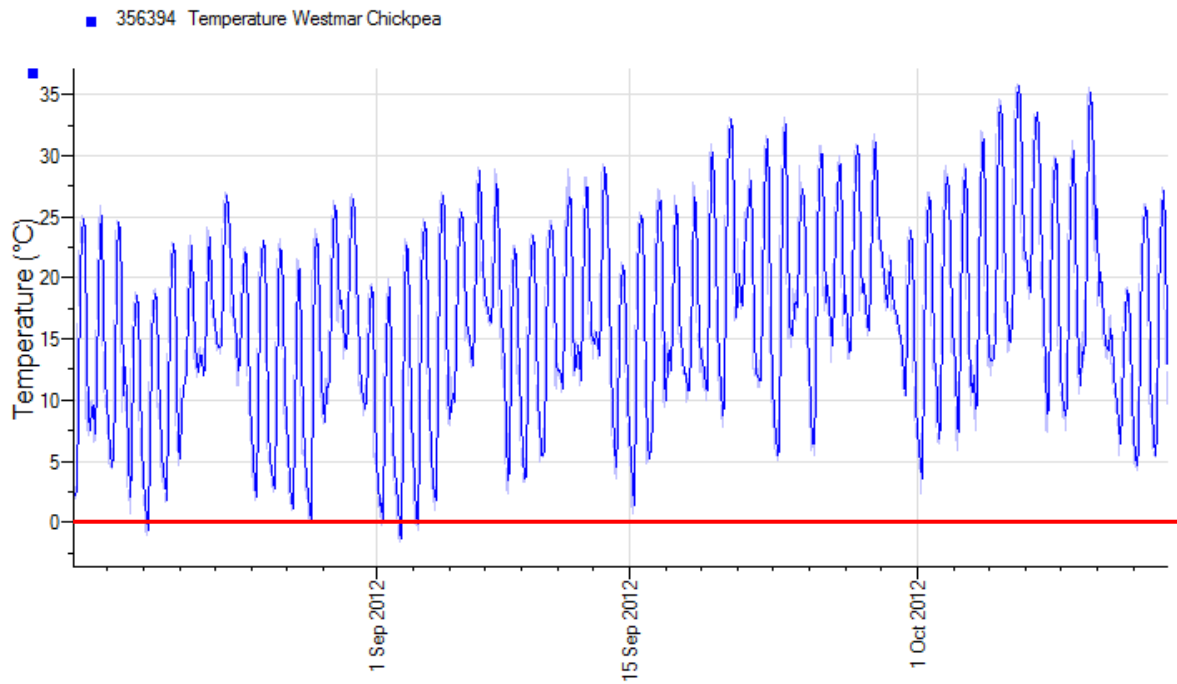
Roma Chickpea – Data not available at time of publication

[Home](#)

Springsure Chickpea – Data not available at time of publication

[Home](#)

2012 Westmar Chickpea



[Home](#)

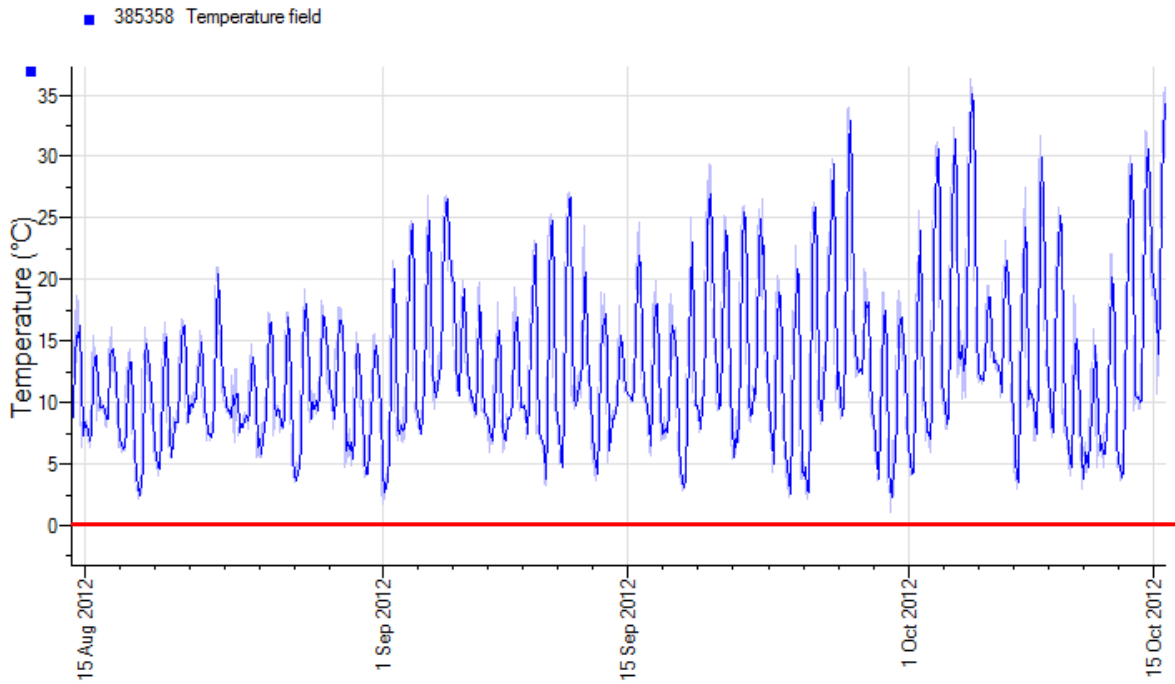
Balaklava Chickpea – Data not available at time of publication

[Home](#)

Melton Chickpea – Data not available at time of publication

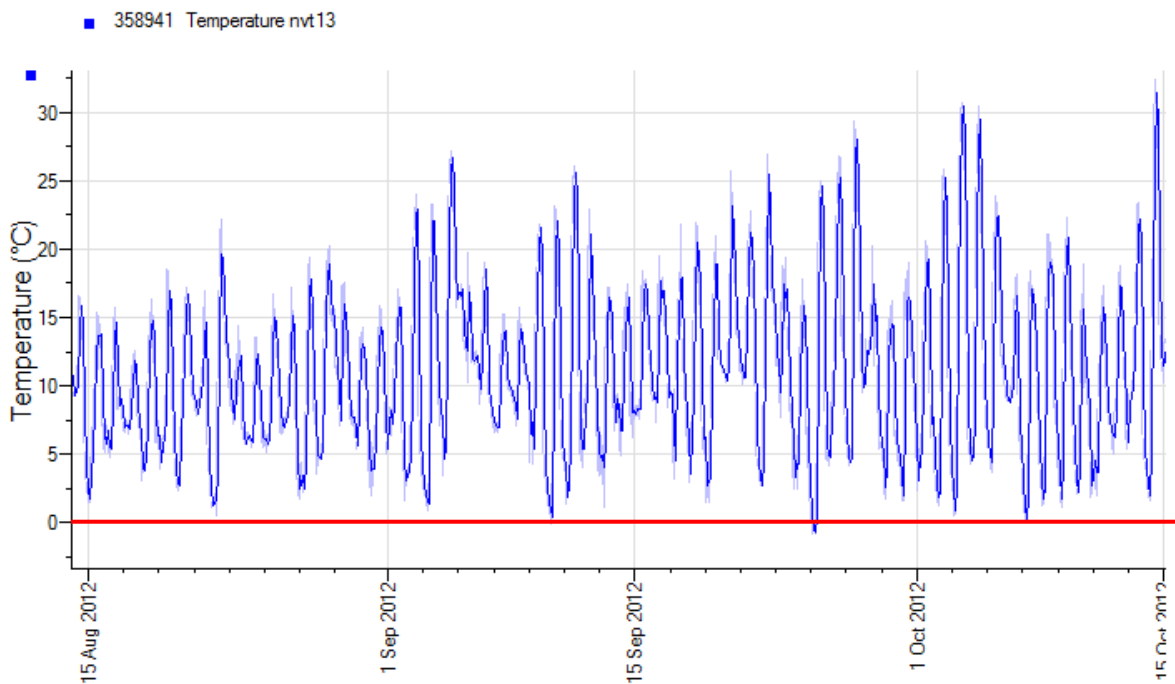
[Home](#)

2012 Minlaton Pulse

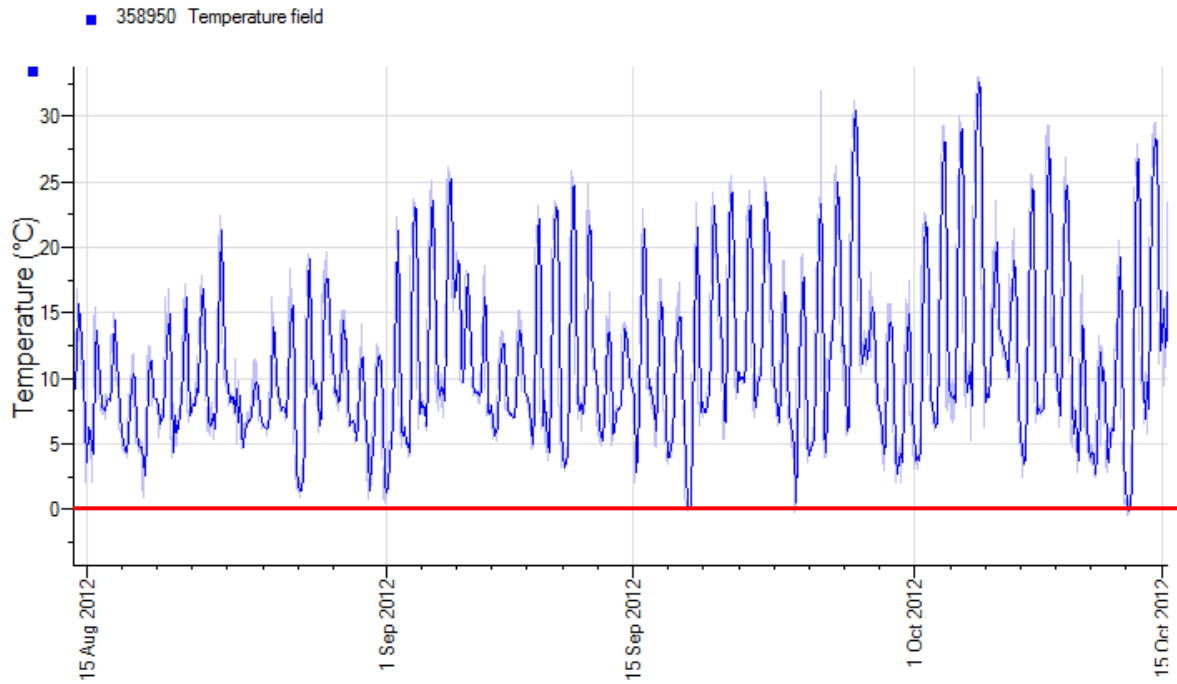


[Home](#)

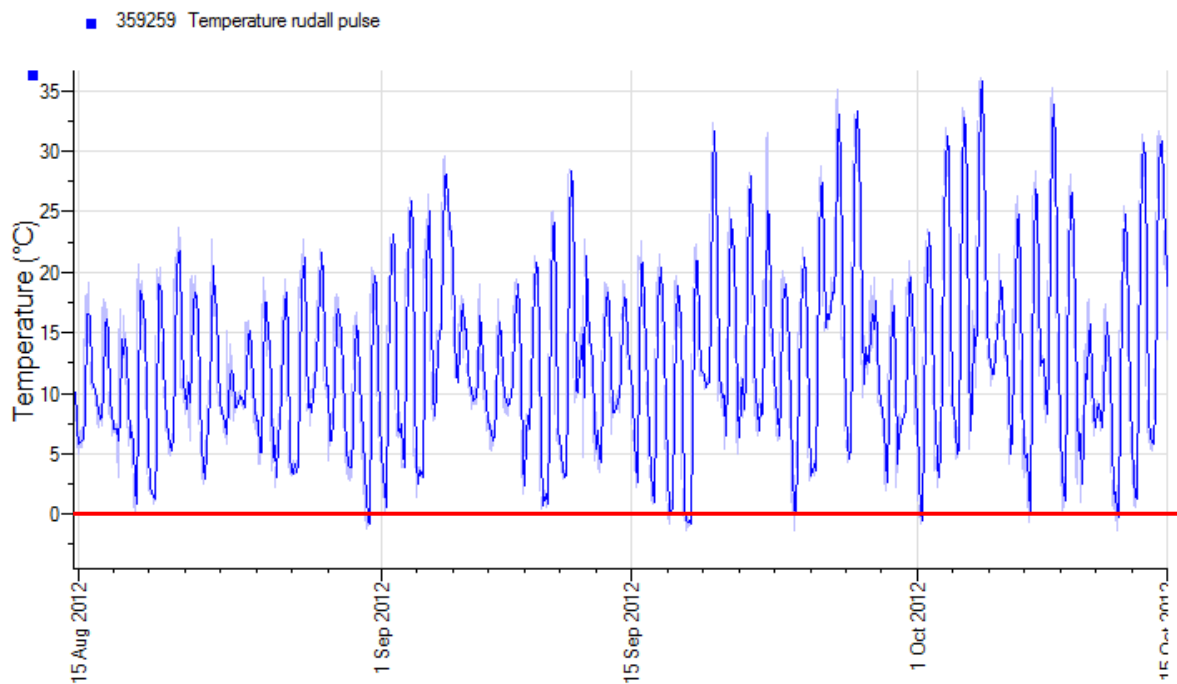
2012 Keith Pulse



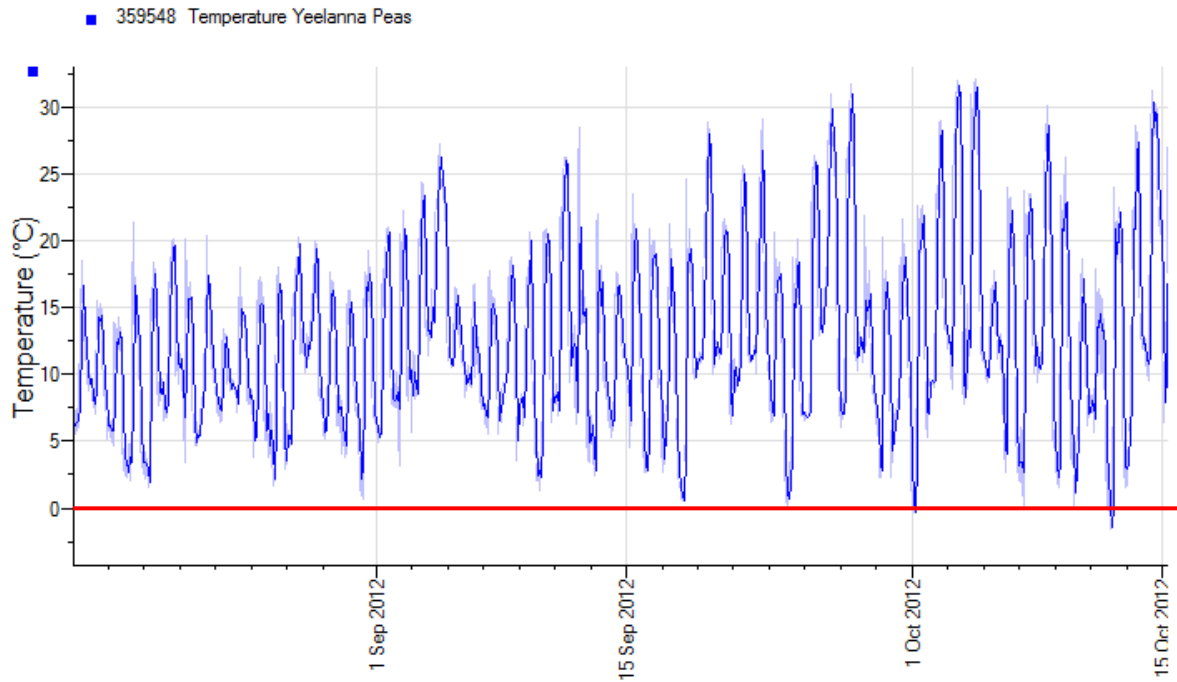
2012 Riverton Pulse



2012 Rudall Pulse



2012 Yeelanna Pulse

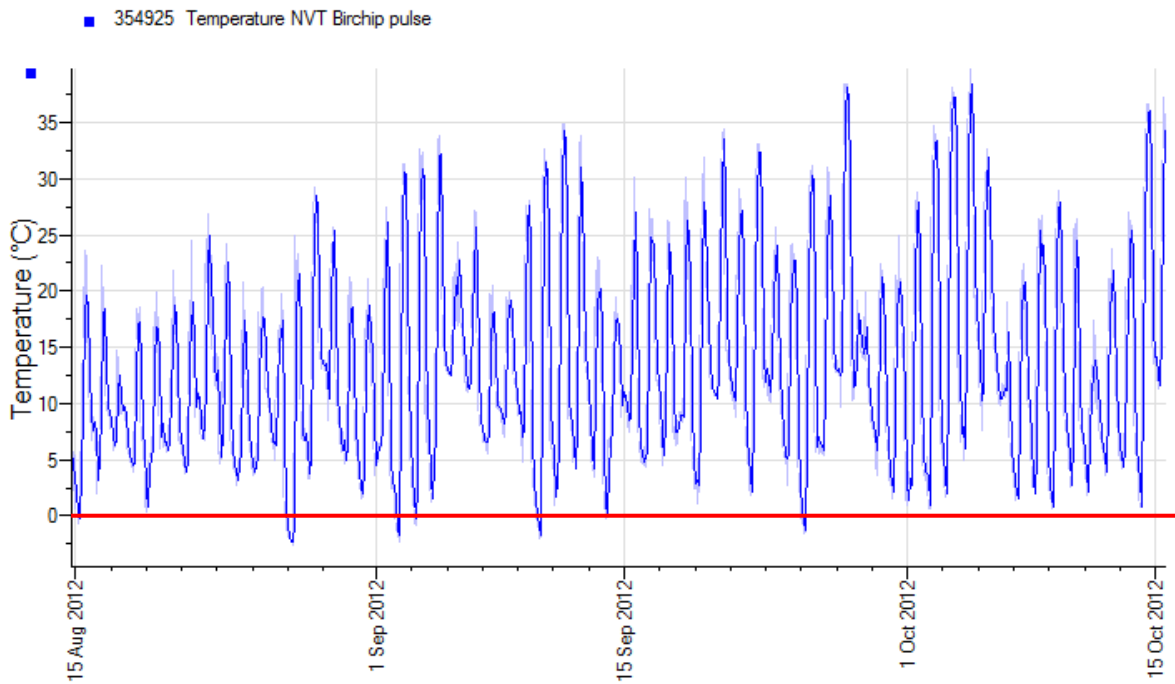


[Home](#)

Beulah Chickpea – Data not available at time of publication

[Home](#)

2012 Birchchip Pulses



[Home](#)

Horsham Chickpea – Data not available at time of publication

[Home](#)

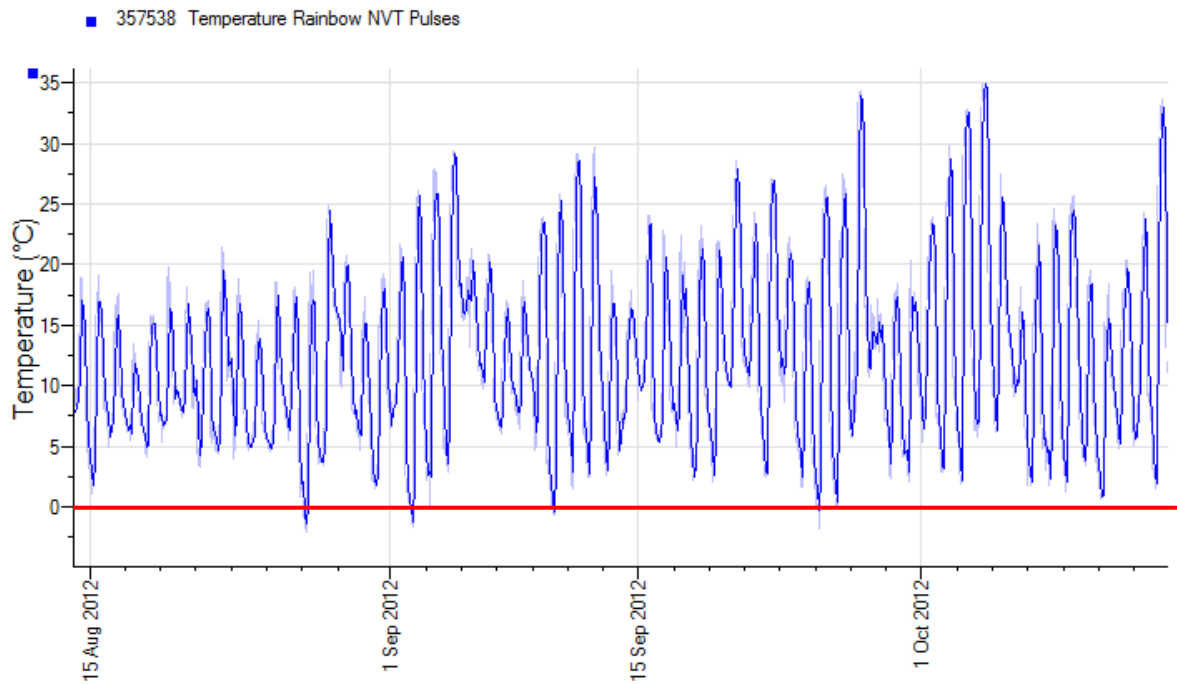
Kaniva Chickpea – Data not available at time of publication

[Home](#)

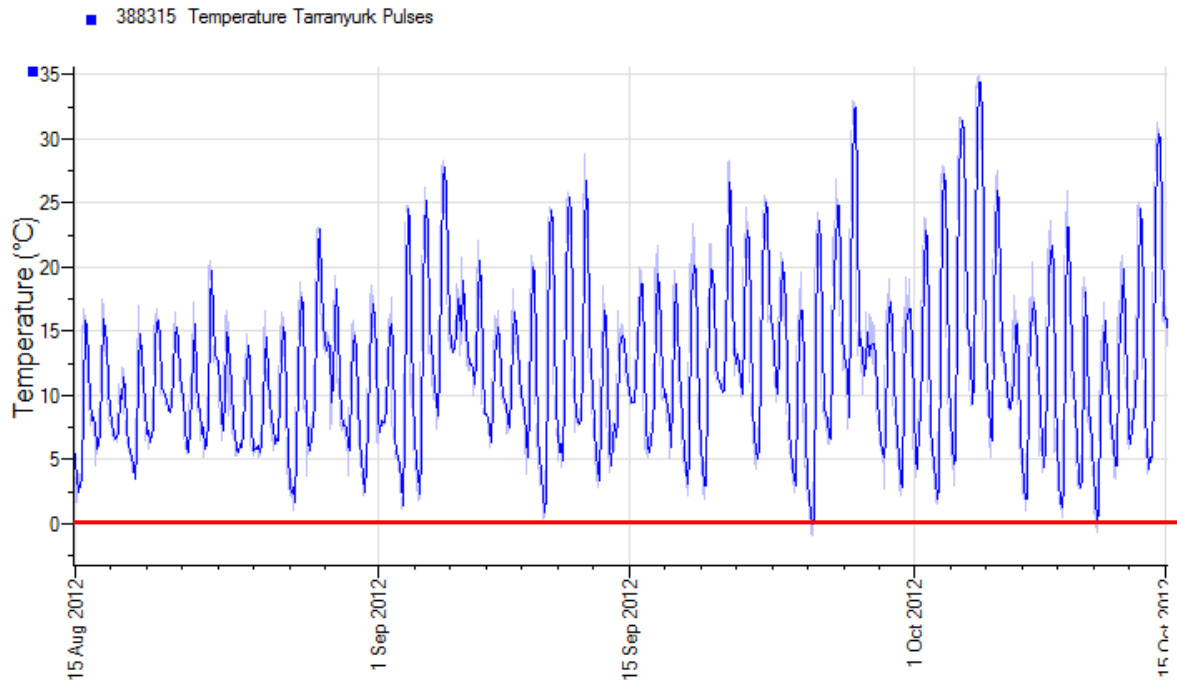
Minyip Chickpea – Data not available at time of publication

[Home](#)

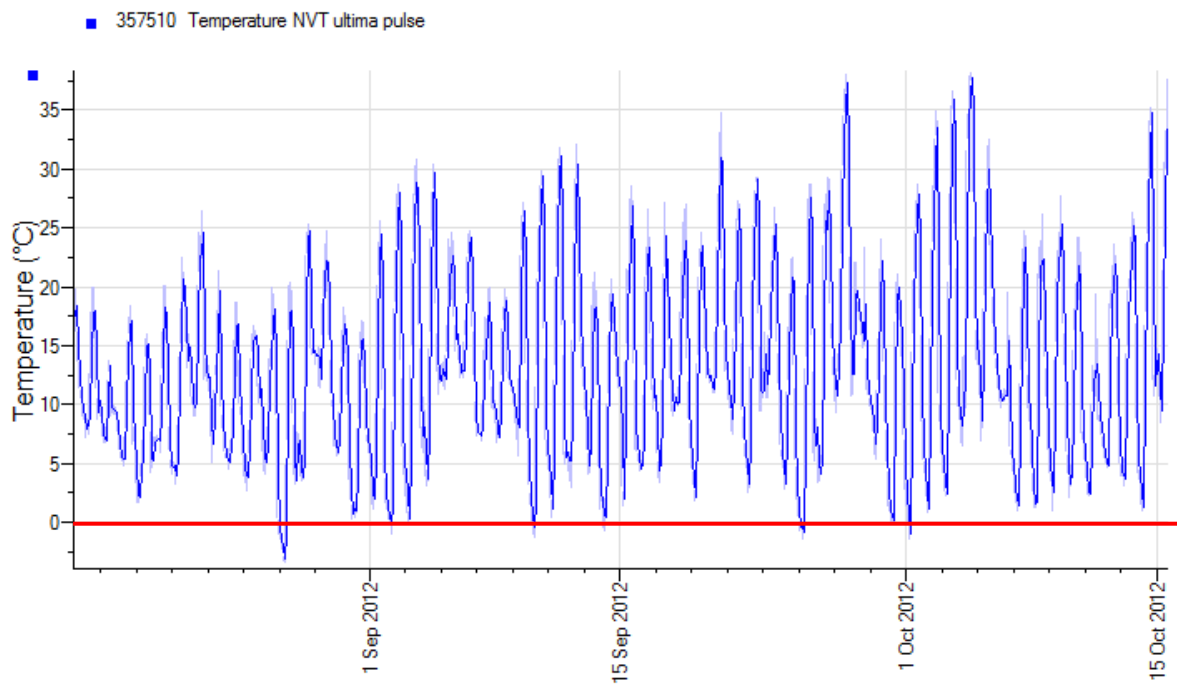
2012 Rainbow Pulse



2012 Tarranyurk Pulses



2012 Ultima Pulse



[Home](#)

Dalwallinu Chickpea – Data not available at time of publication

[Home](#)

Merredin Chickpea – Data not available at time of publication

[Home](#)

Mingenew Chickpea – Data not available at time of publication

[Home](#)

Mullewa Chickpea – Data not available at time of publication

[Home](#)

Wongan Hills Chickpea – Data not available at time of publication

[Home](#)

York Chickpea – Data not available at time of publication