

Introduction:

At most National Variety Trial sites there is a small device - a Tiny Tag - that is designed to capture the air temperature every 15 minutes throughout the growing season. This data can be used by NVT staff in determining the effect of temperature stresses on trials.

On the list of locations below, there are some that are shaded with a blue background. These locations have temperature data available. The remaining sites have no data available either because it has yet to be received, there was no Tiny Tag present at the site or the Tiny Tag malfunctioned.

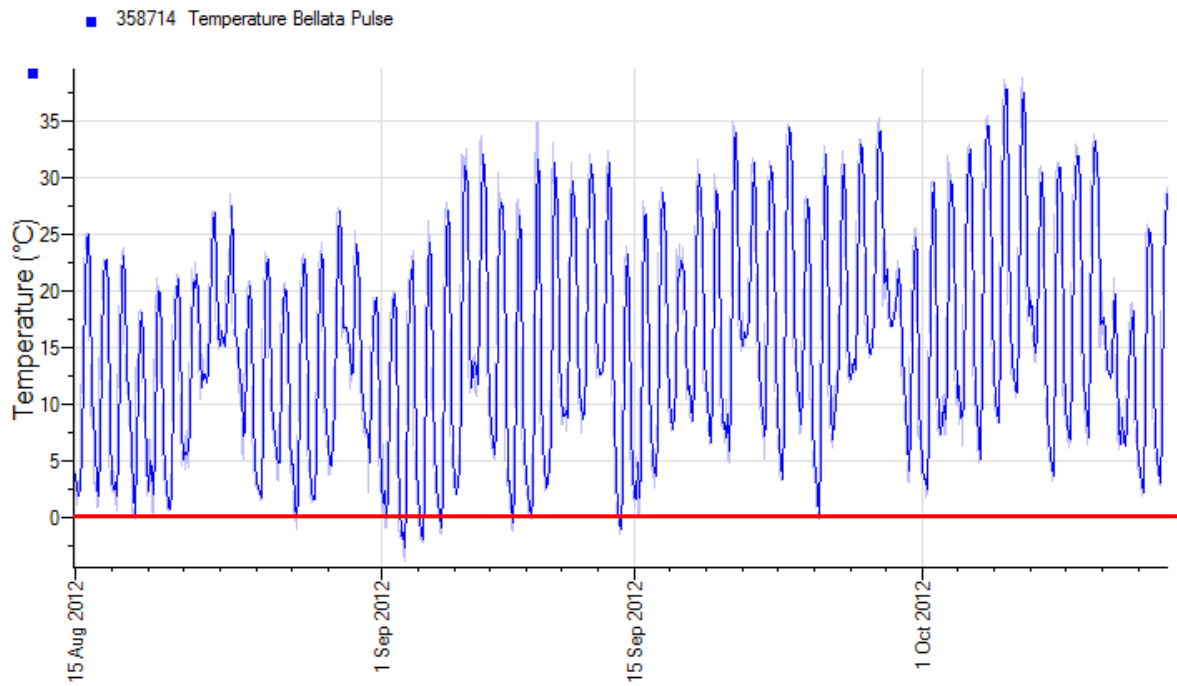
How to use this document:

Click on the location name to view the graph. The text is hyperlinked to the page with the graph for that location. To return to the list and view another location’s data, click **home** at the top right corner of the page to return to this page.

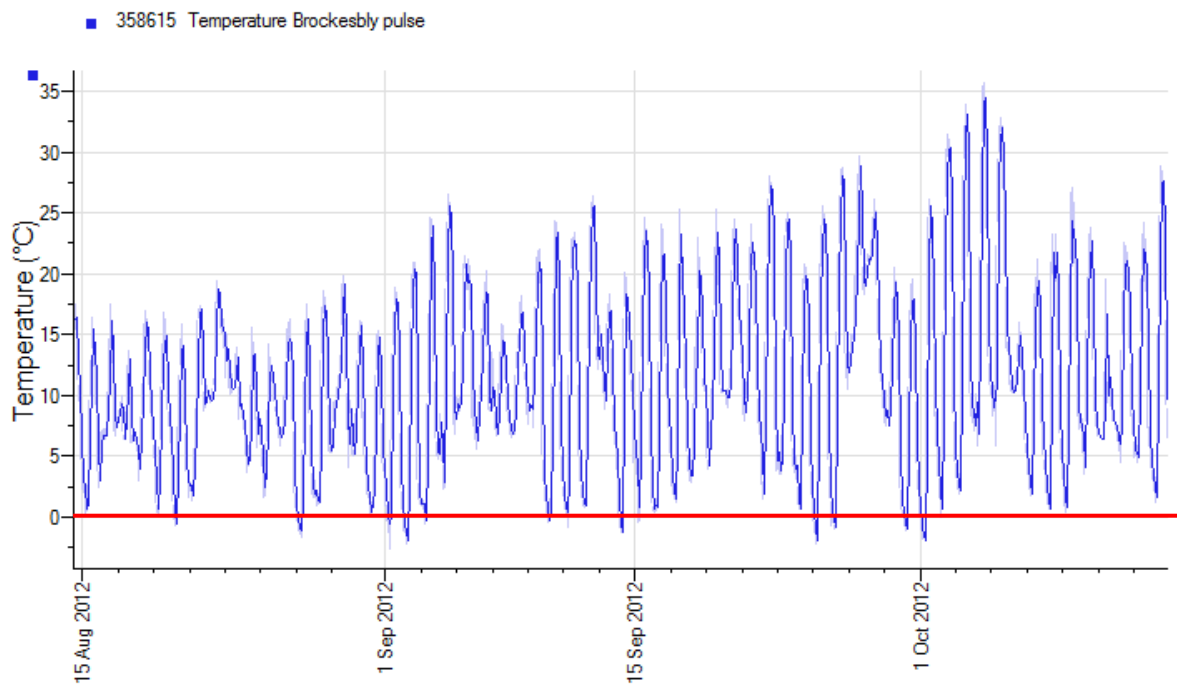
Trial Locations:

NSW	SA	VIC
Bellata	Keith	Dookie
Brocklesby	Lameroo	Kaniva
Bullarah	Laura	Wonwondah
Coleambally	Lock	
Coonamble	Maitland	
Harden	Minlaton	
Mullaley	Tarlee	
Temora	Wolseley	
Tulloona		
Walgett		

2012 Bellata Pulse



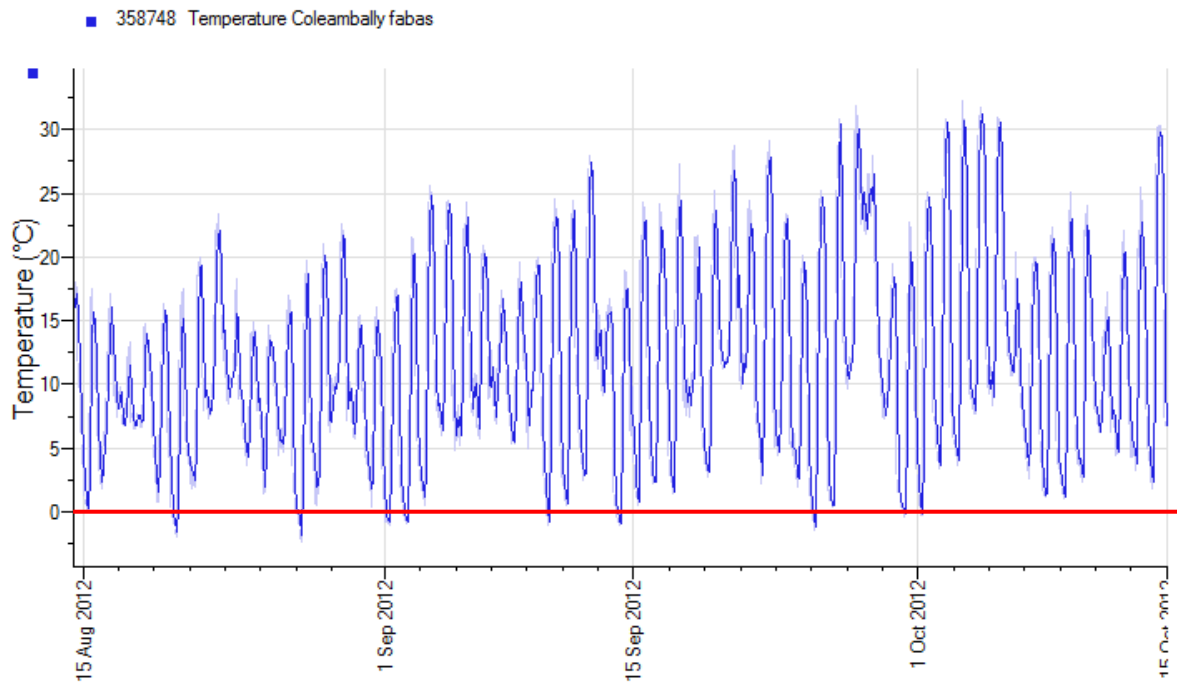
2012 Brocklesbly Pulse



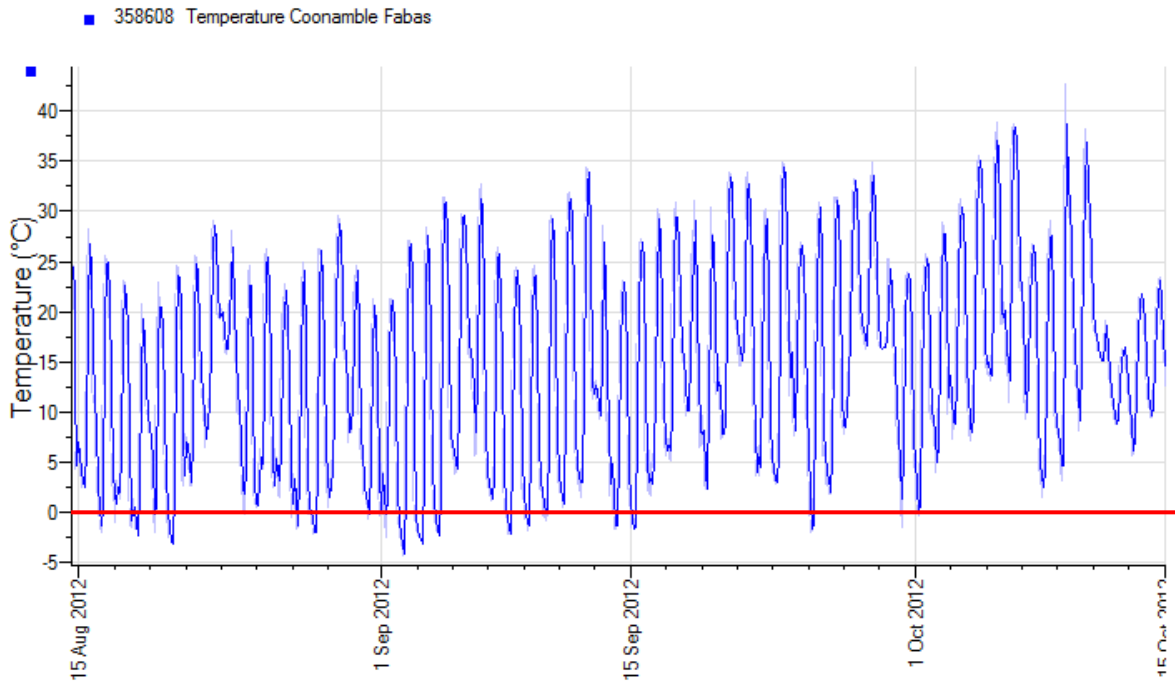
Bullarah Faba Bean – Data not available at time of publication



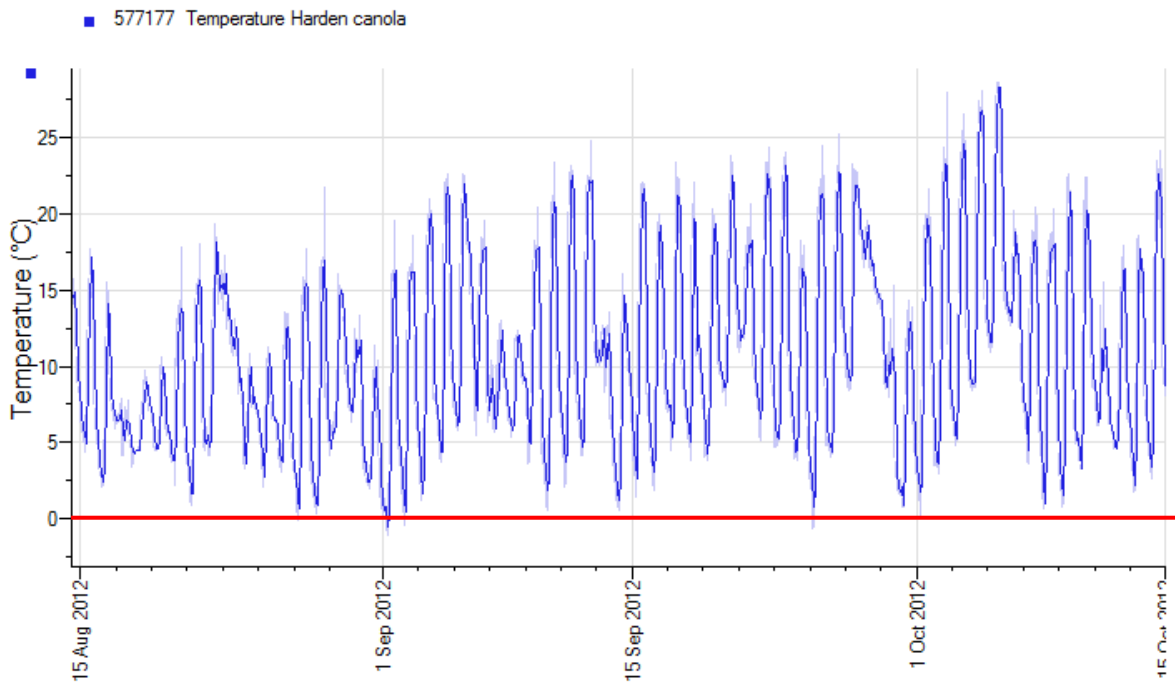
2012 Coleambally Faba Bean



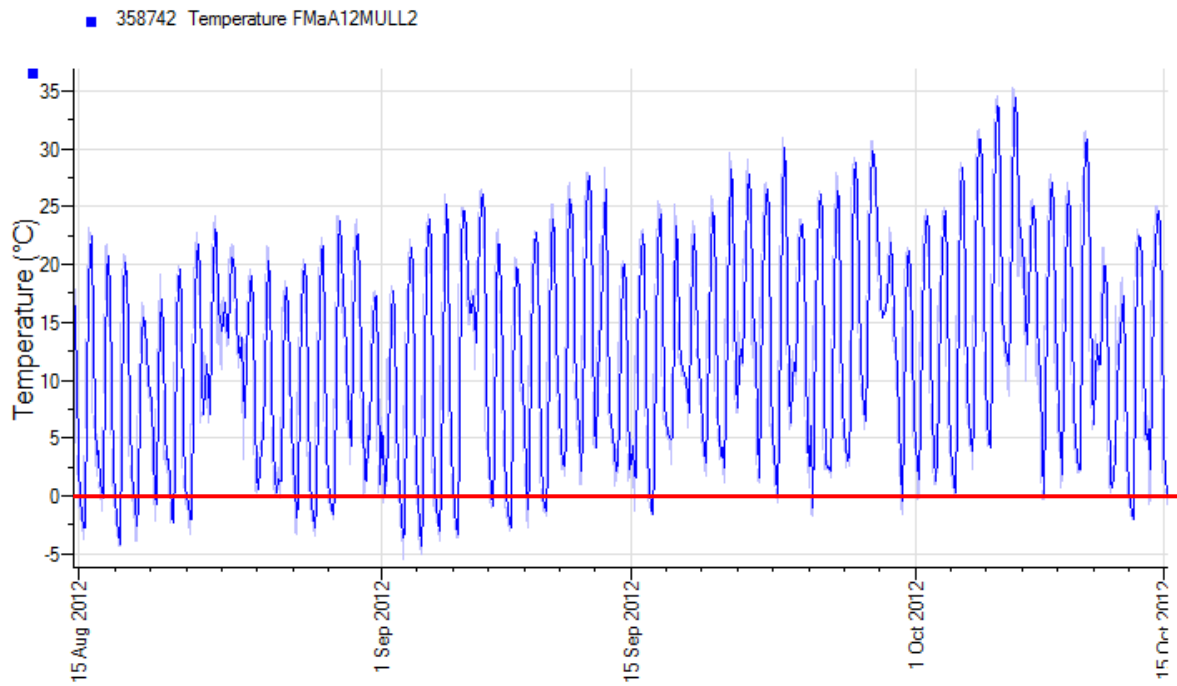
2012 Coonamble Faba Bean



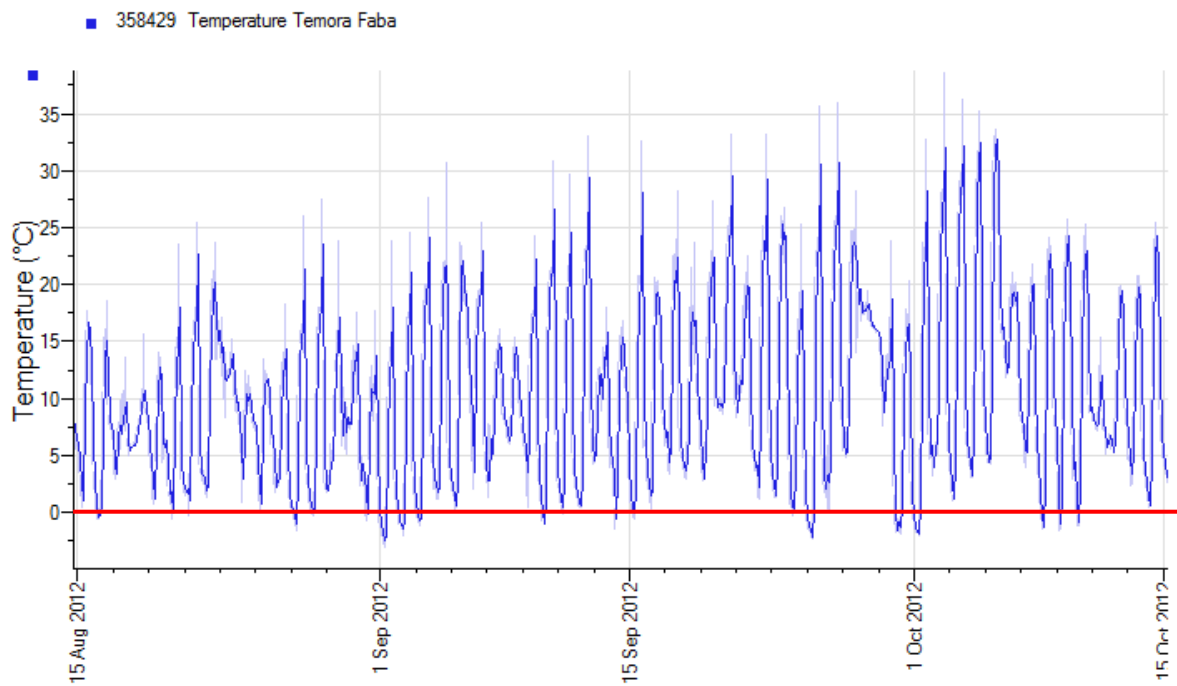
2012 Harden Pulse



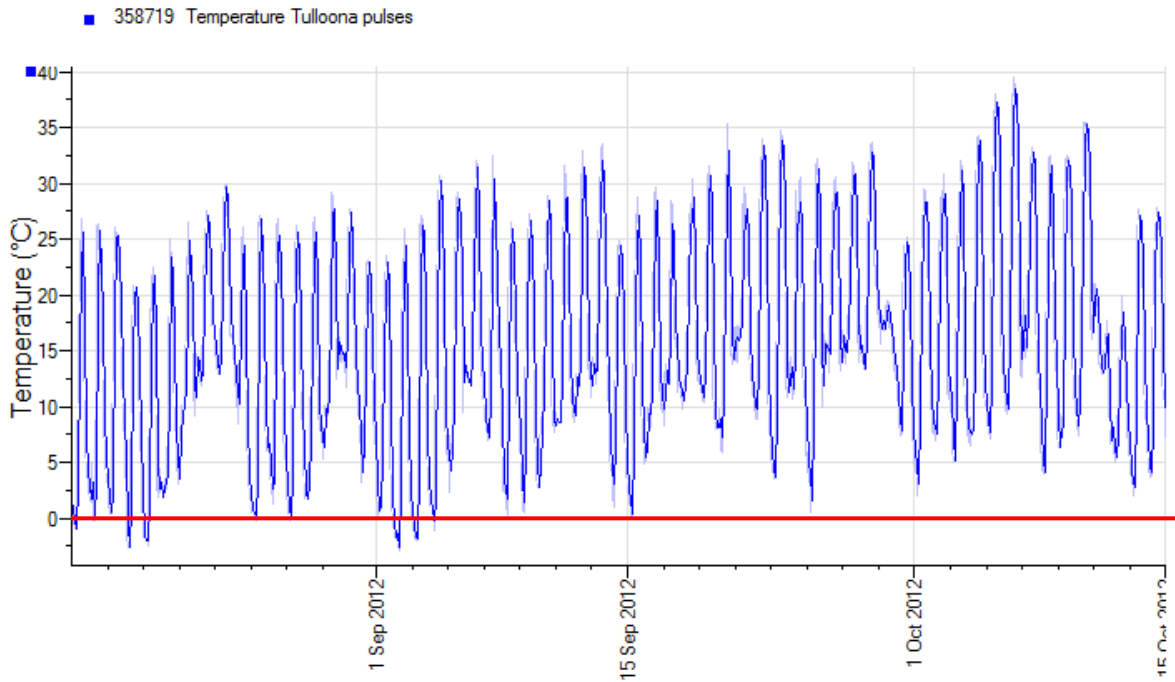
2012 Mullaley Faba Bean



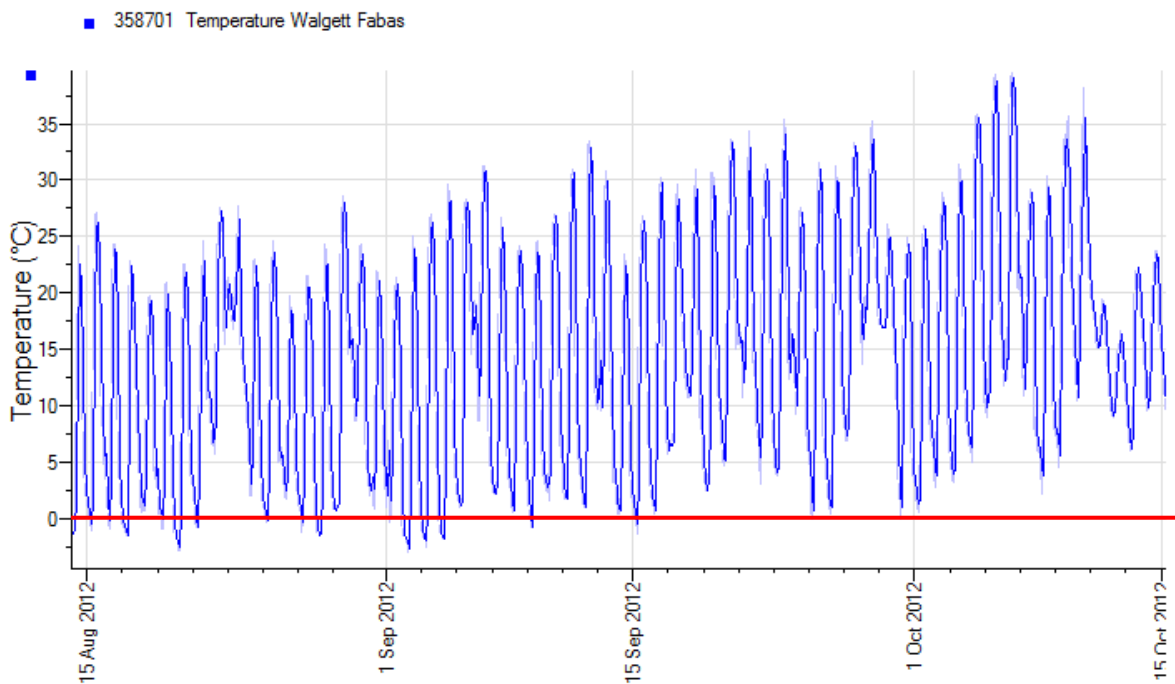
2012 Temora Faba Bean



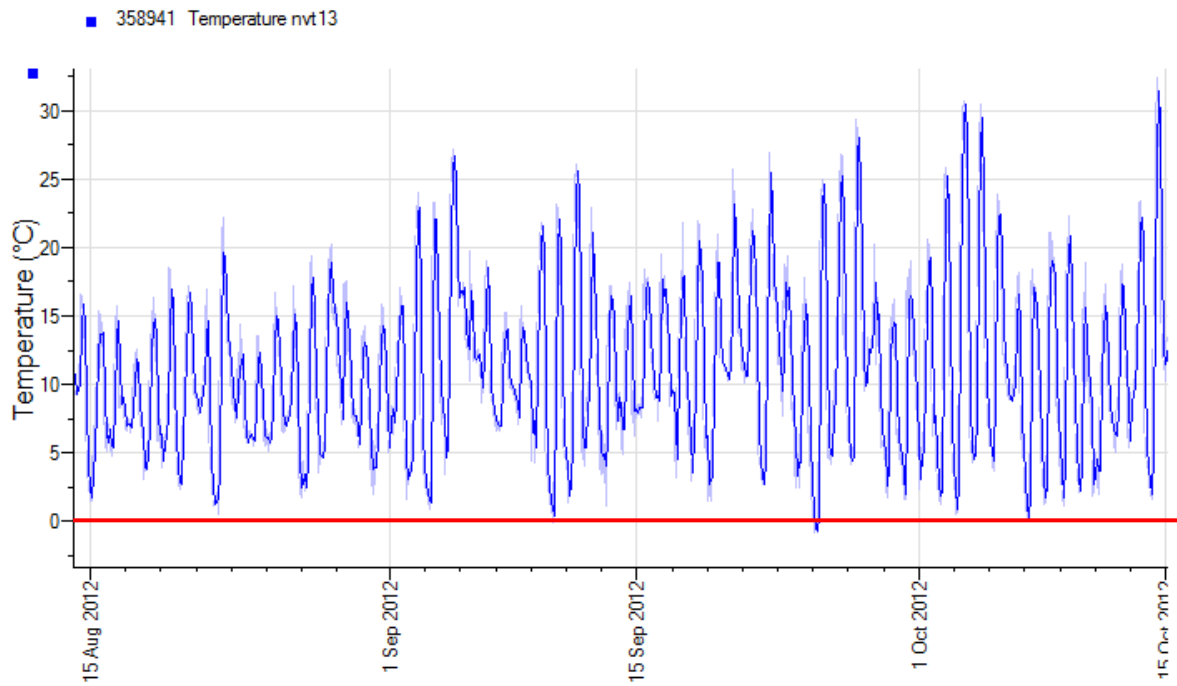
2012 Tulloona Pulses



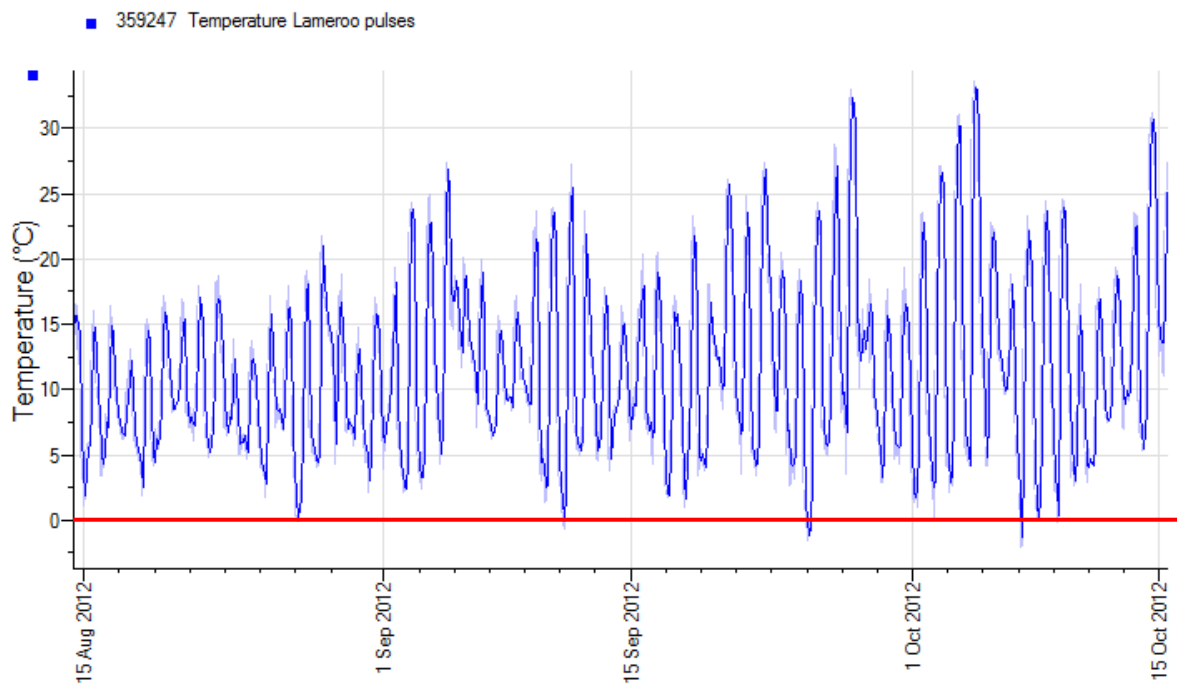
2012 Walgett Faba Bean



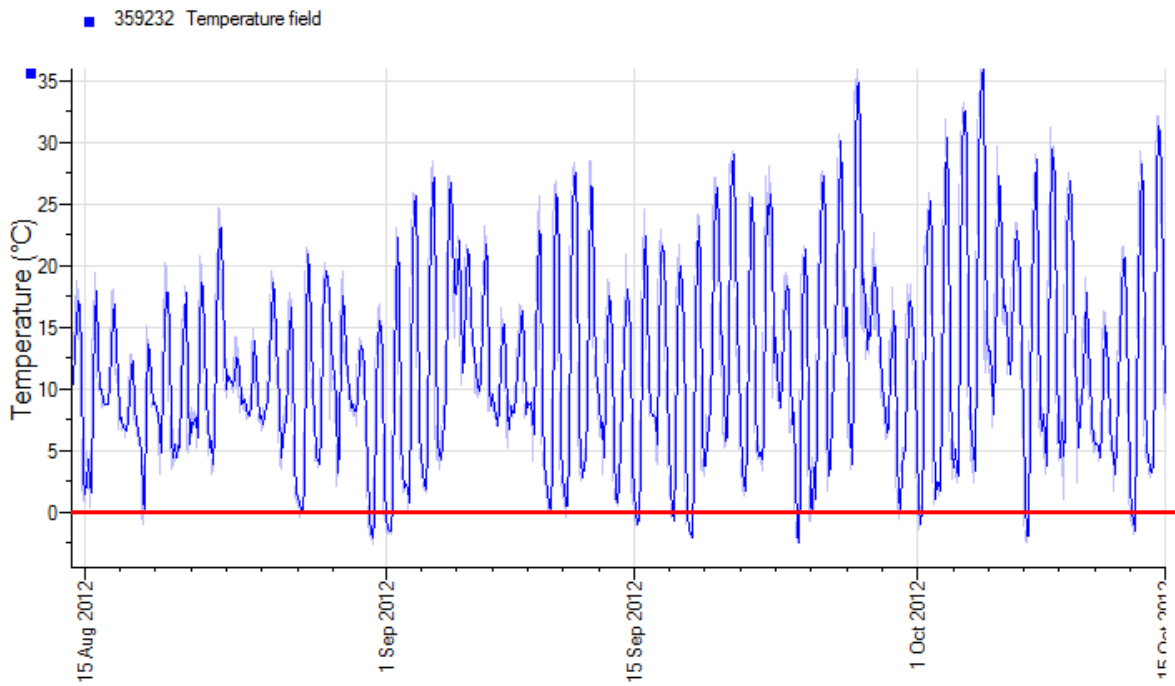
2012 Keith Pulse



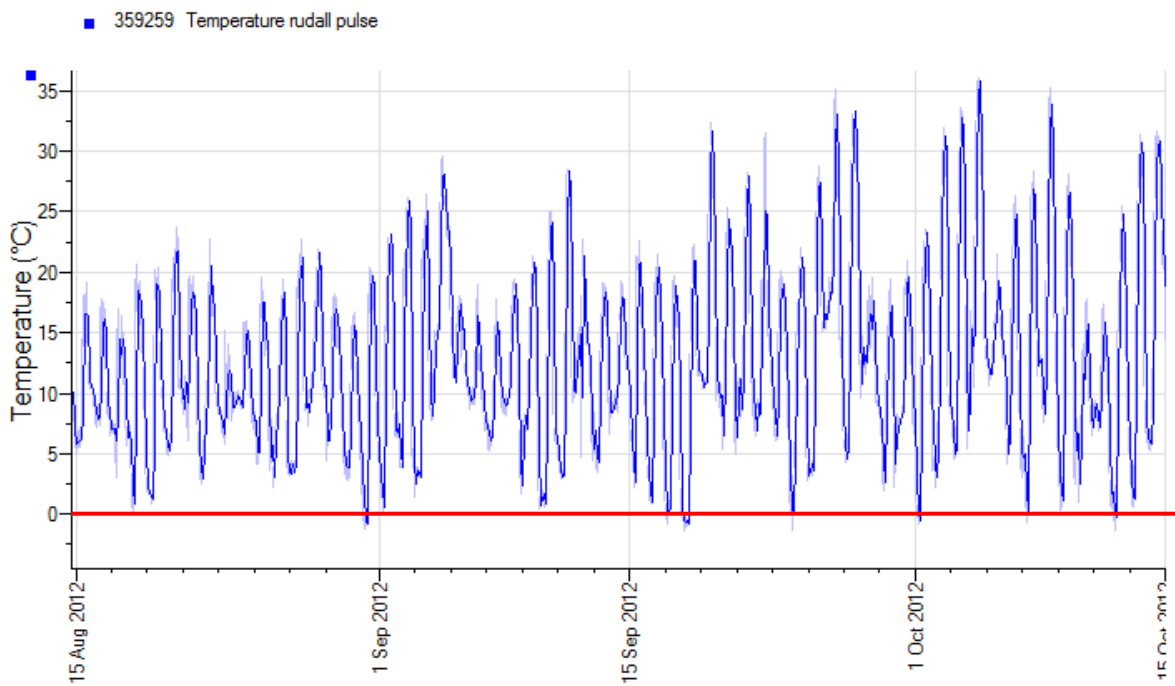
2012 Lameroo Pulses



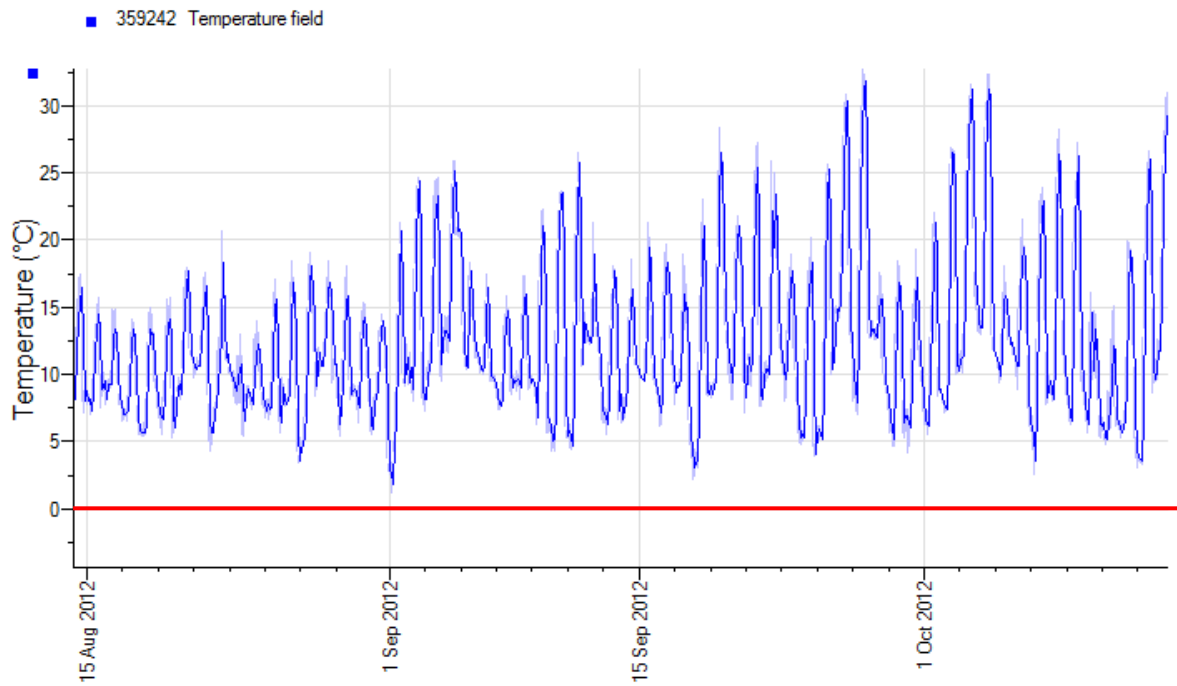
2012 Laura Pulse



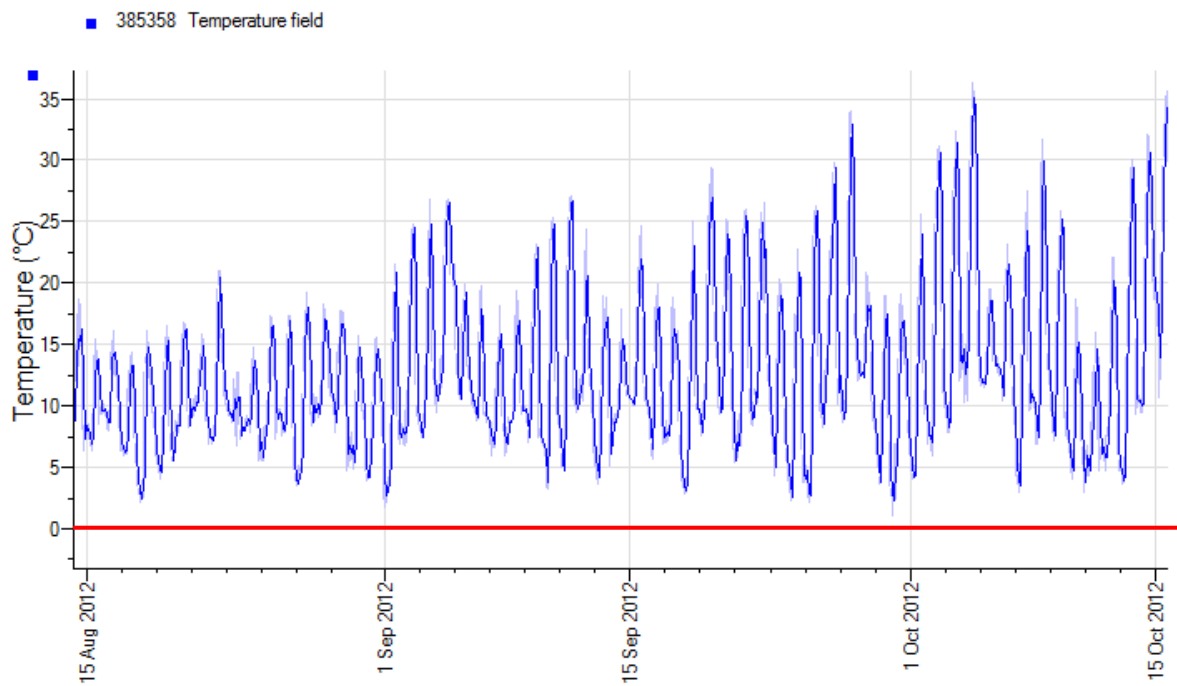
2012 Rudall Pulse



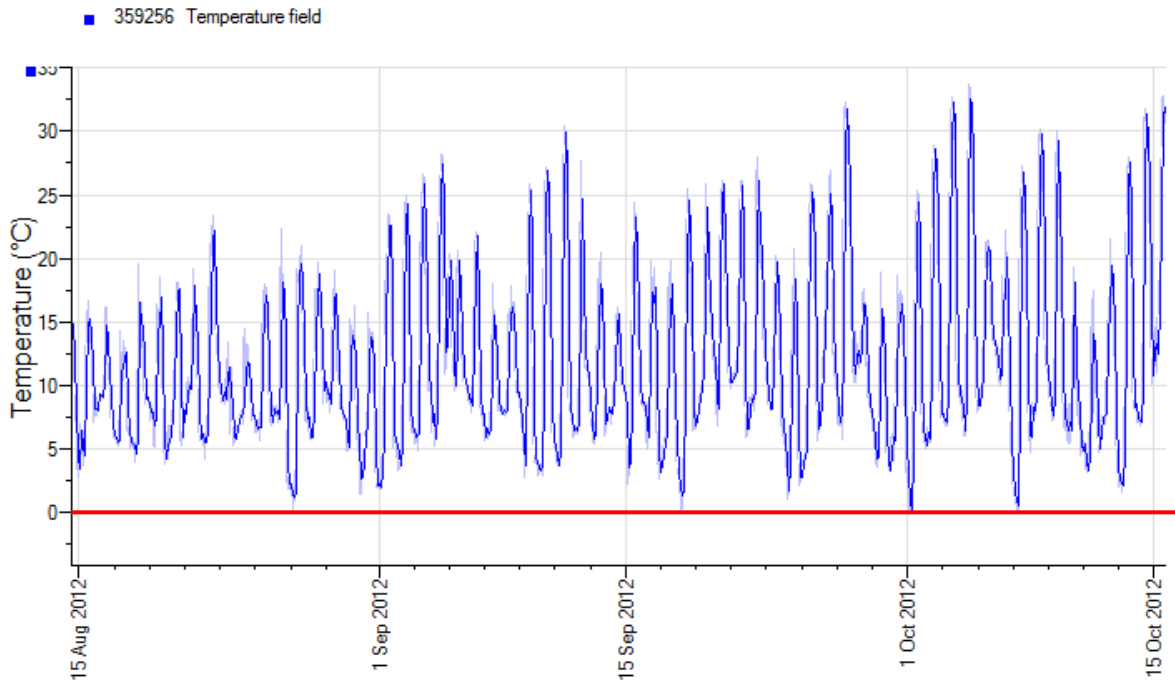
2012 Maitland Pulse



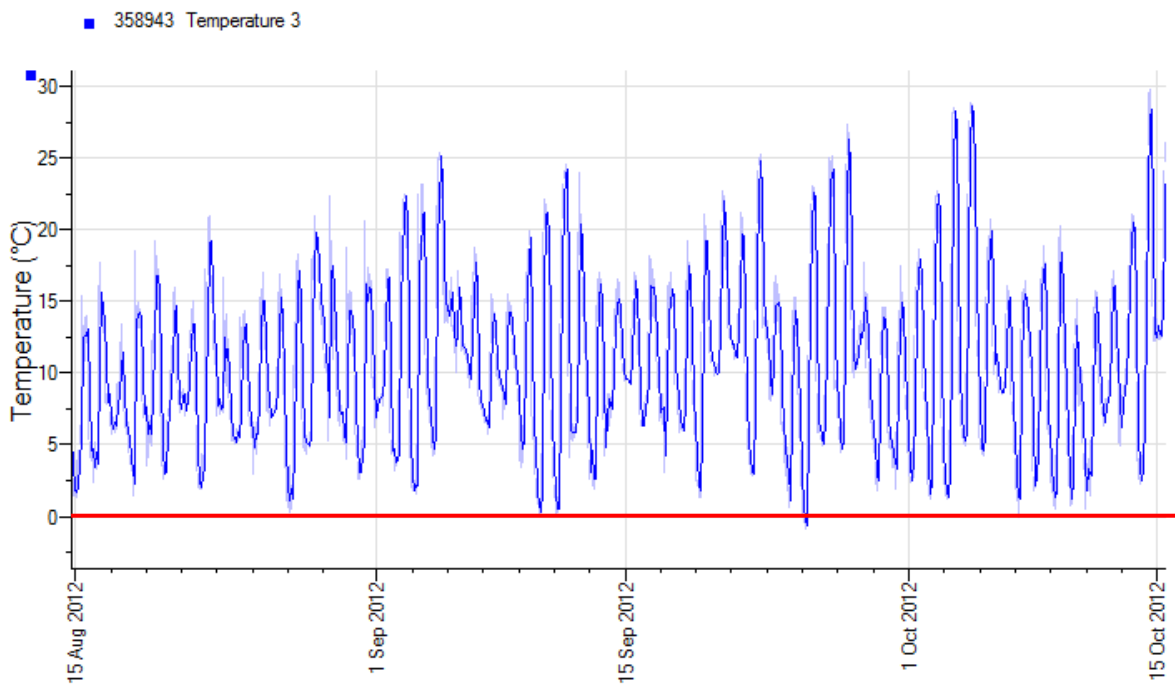
2012 Minlaton Pulse



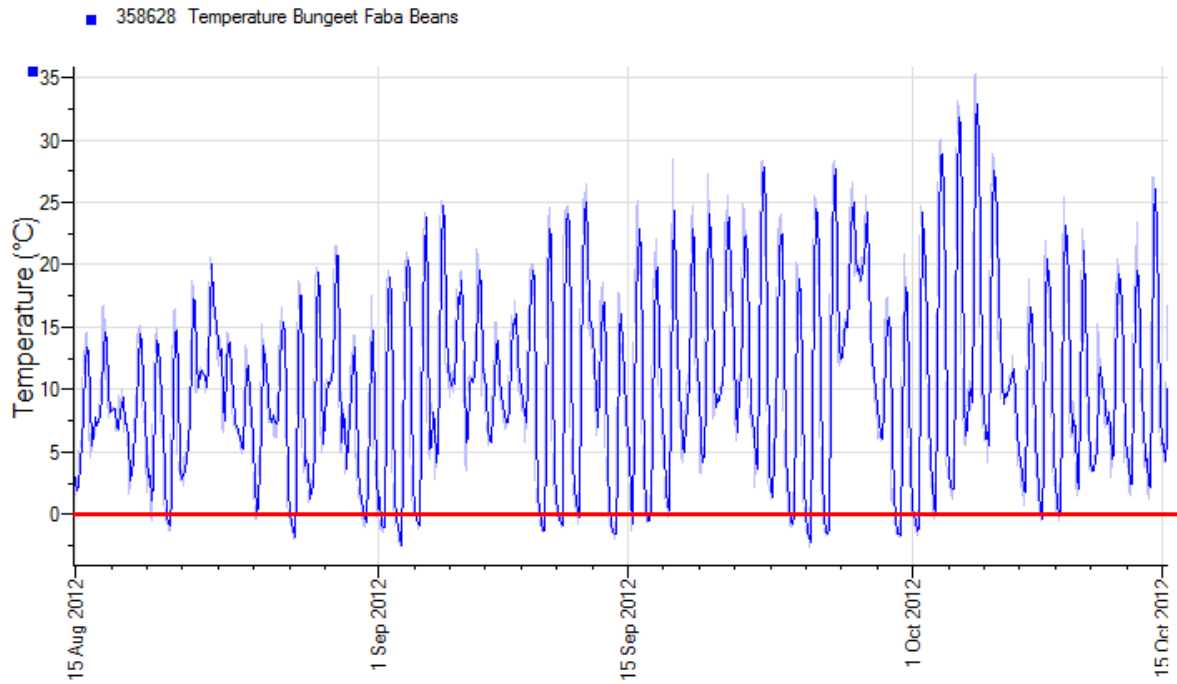
2012 Tarlee Faba Bean



2012 Wolseley Faba Bean



2012 Dookie Faba Bean



Kaniva Faba Bean – Data not available at time of publication

2012 Wonwondah Faba Beans

