

Introduction:

At most National Variety Trial sites there is a small device - a Tiny Tag - that is designed to capture the air temperature every 15 minutes throughout the growing season. This data can be used by NVT staff in determining the effect of temperature stresses on trials.

On the list of locations below, there are some that are shaded with a blue background. These locations have temperature data available. The remaining sites have no data available either because it has yet to be received, there was no Tiny Tag present at the site or the Tiny Tag malfunctioned.

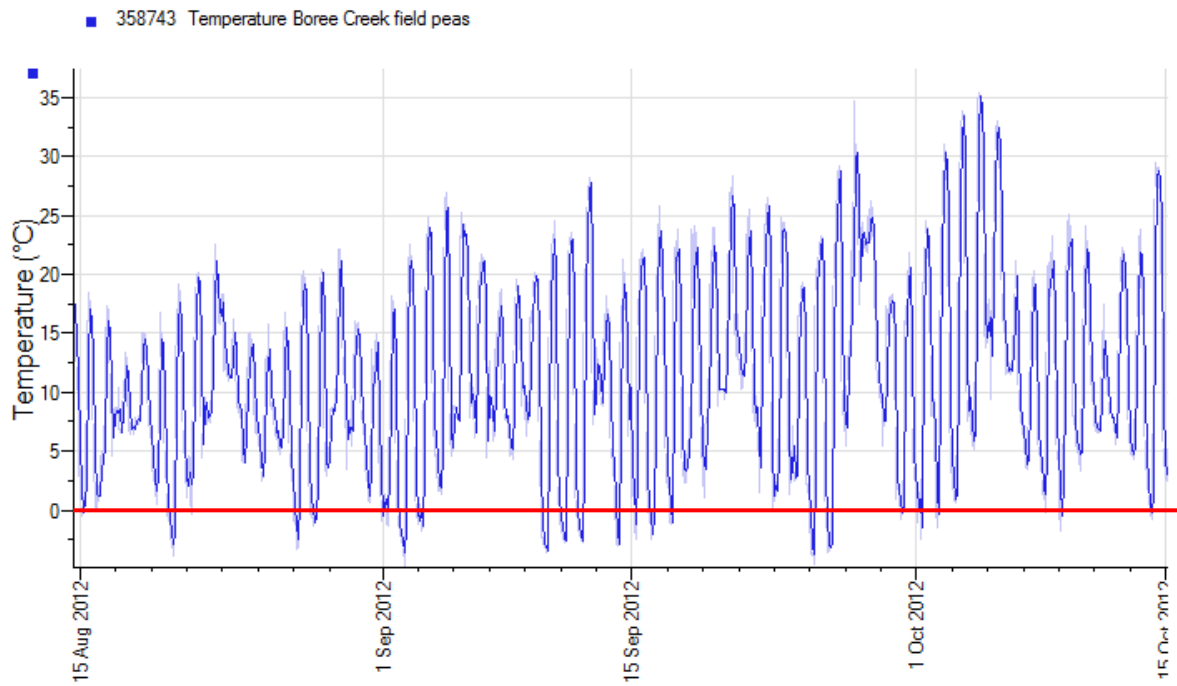
How to use this document:

Click on the location name to view the graph. The text is hyperlinked to the page with the graph for that location. To return to the list and view another location's data, click **home** at the top right corner of the page to return to this page.

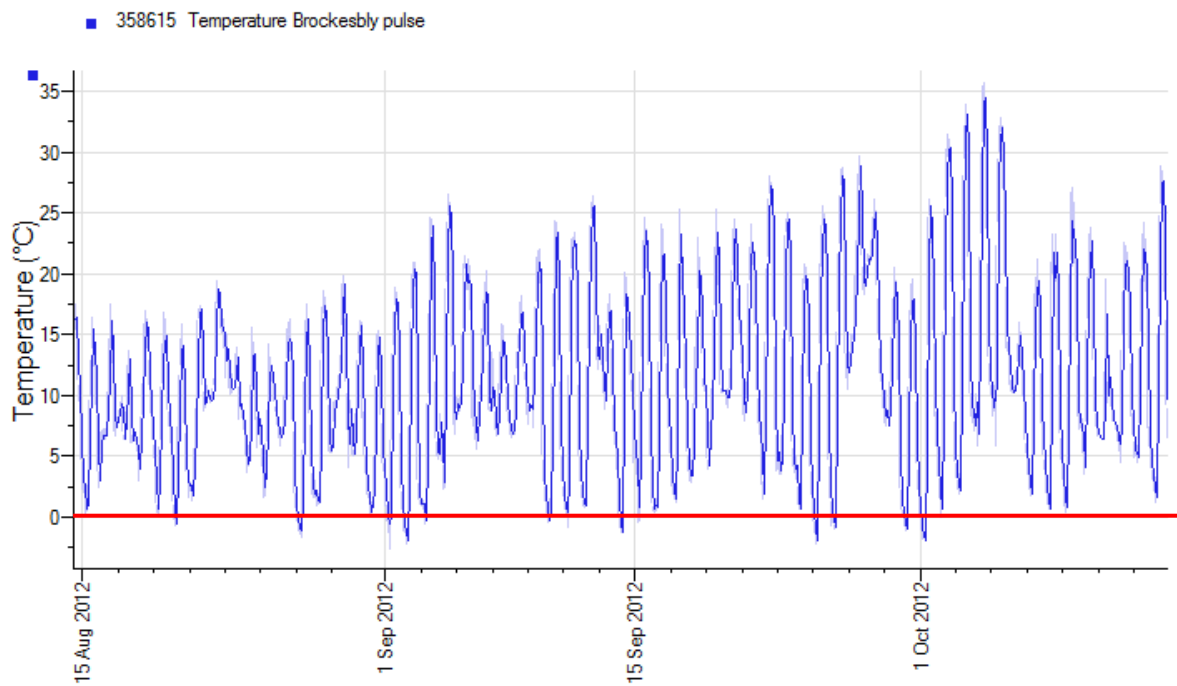
Trial Locations:

NSW	SA	VIC	WA
Boree Creek	Lameroo	Birchip	Dalwallinu
Brocklesby	Laura	Kaniva	Grass Patch
Condobolin	Minlaton	Rainbow	Holt Rock
Goonumbla	Mundulla	Tarranyurk	Katanning
Mayrung	Riverton	Ultima	Merredin
Temora	Rudall		Mingenew
Trangie	Willamulka		Pingelly
	Yeelanna		Pingrup
			Wittenoom Hills
			Wongan Hills
			York

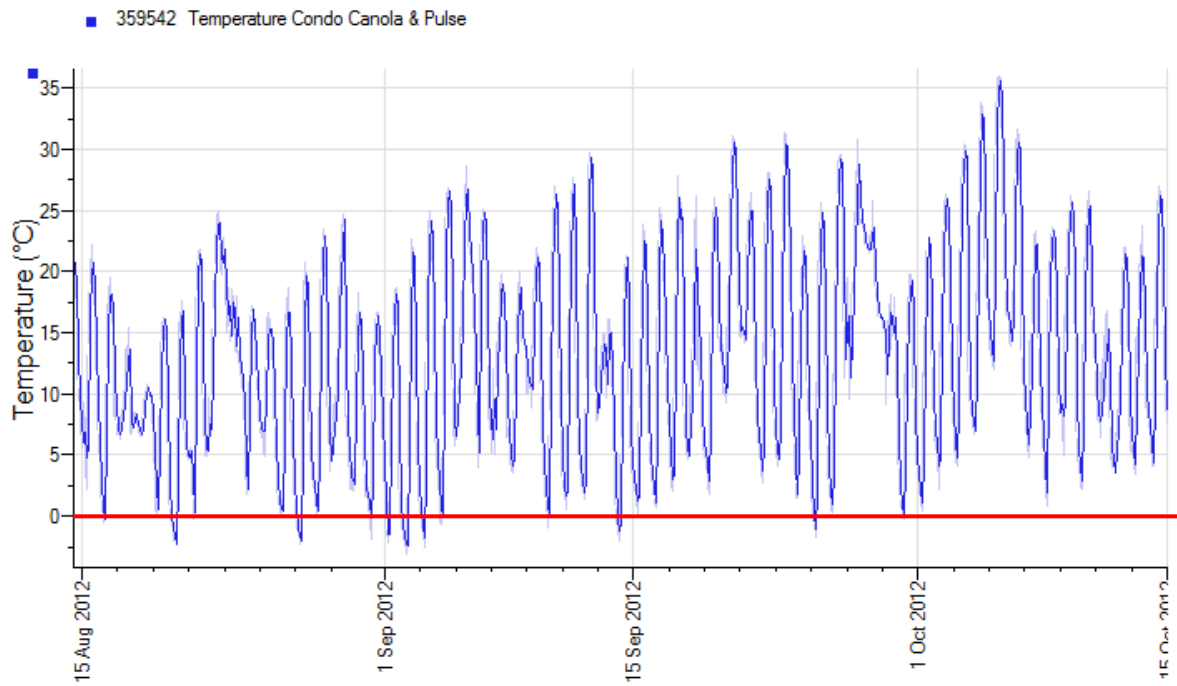
2012 Boree Creek Field Peas



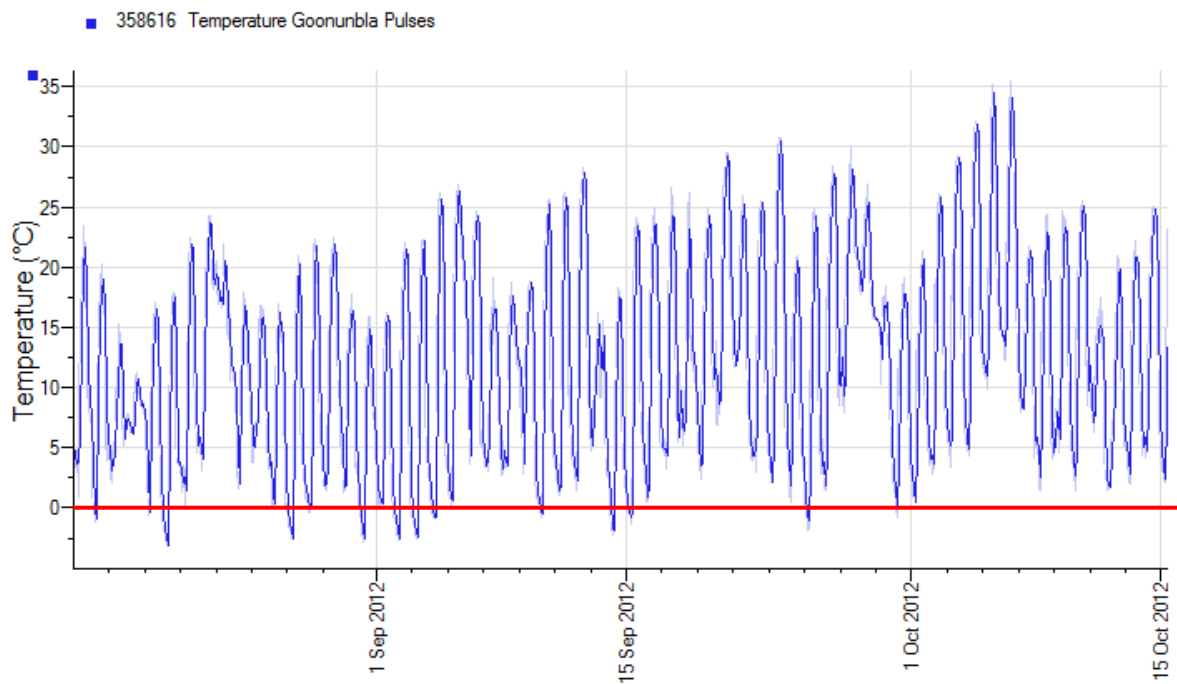
2012 Brocklesby Pulse



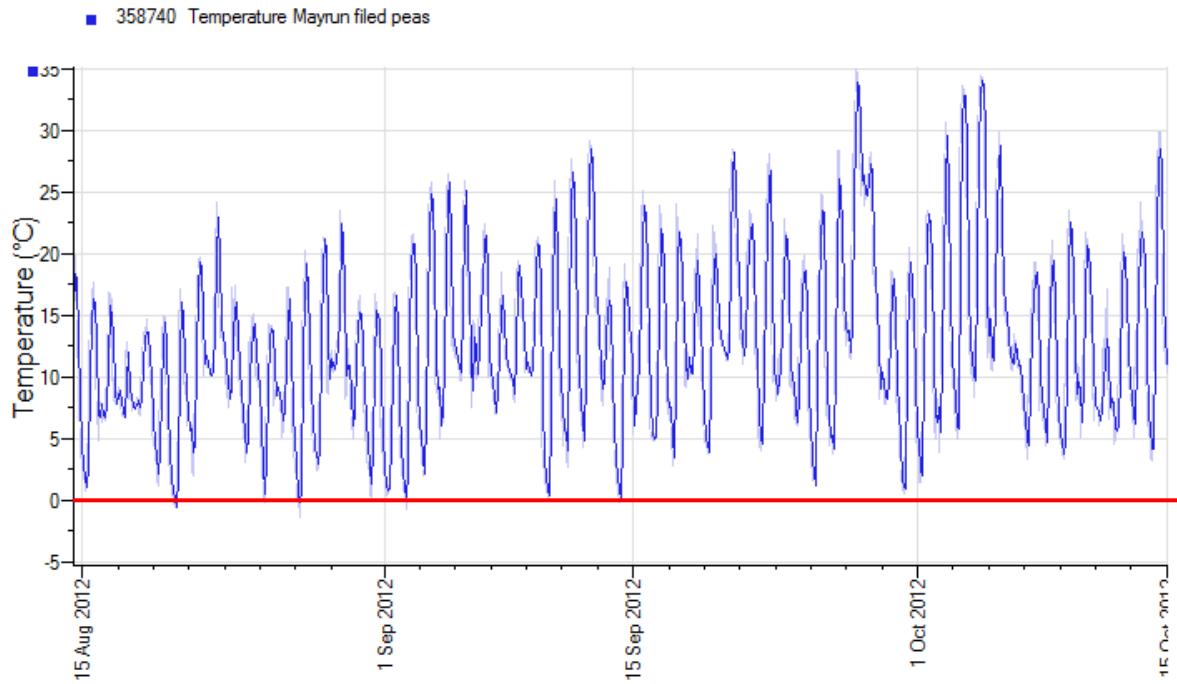
2012 Condobolin Canola & Pulse



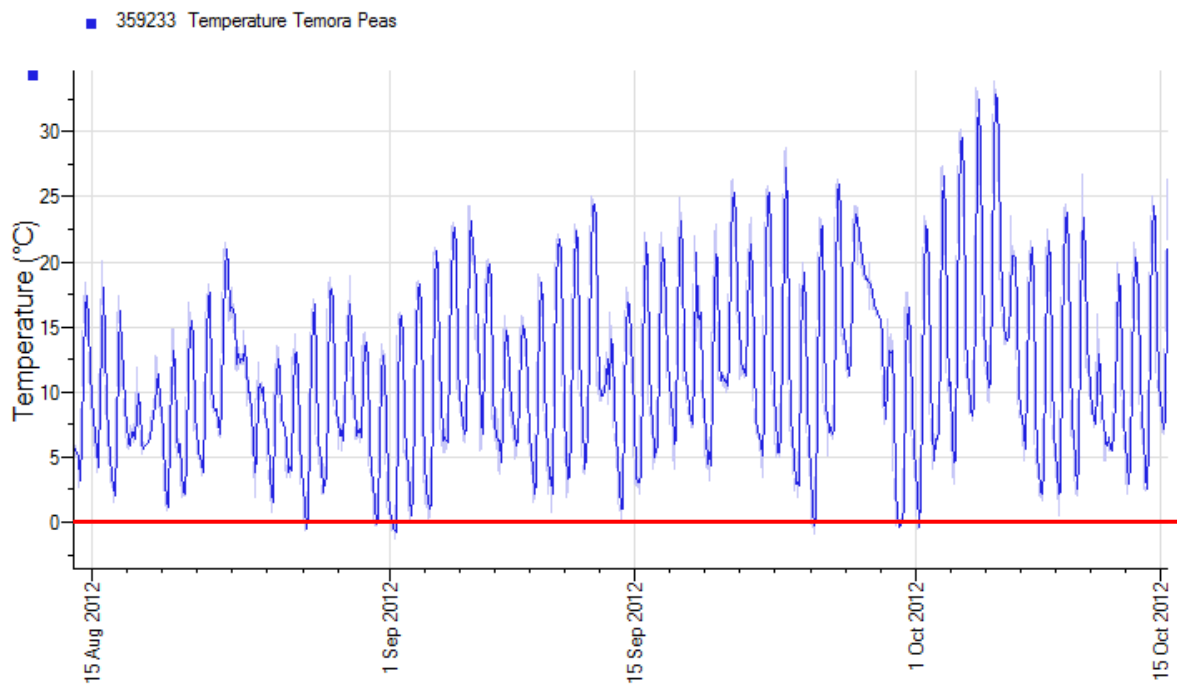
2012 Goonumbla Pulses



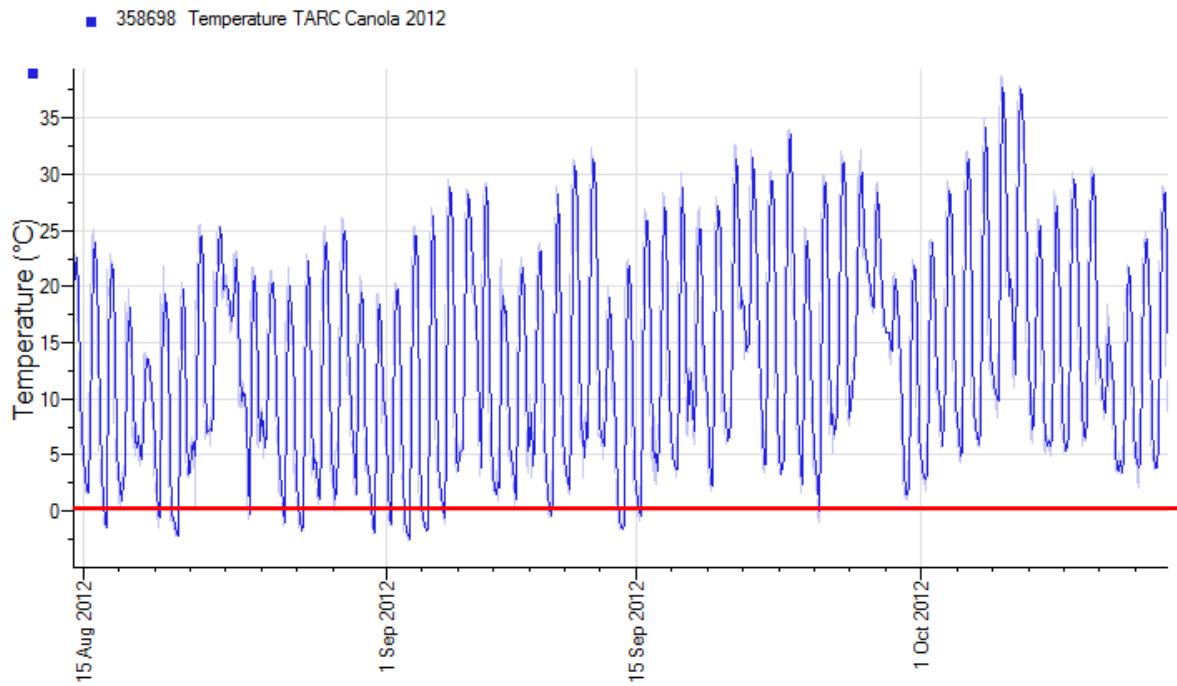
2012 Mayrung Field Pea



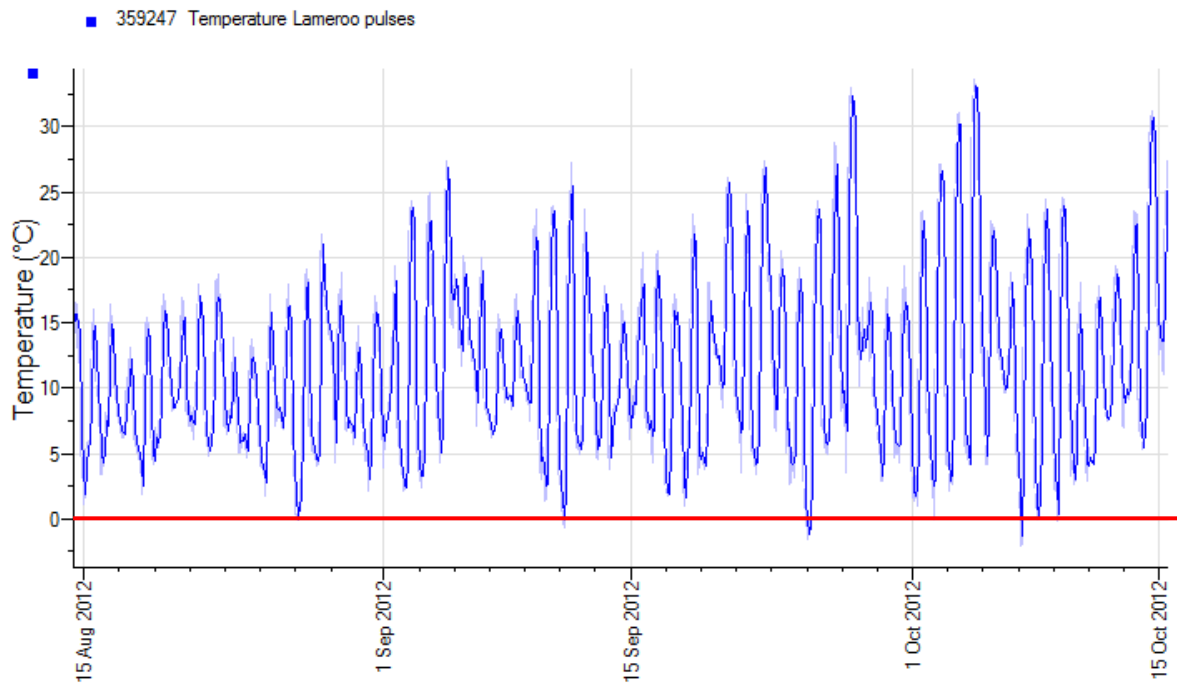
2012 Temora Field Peas



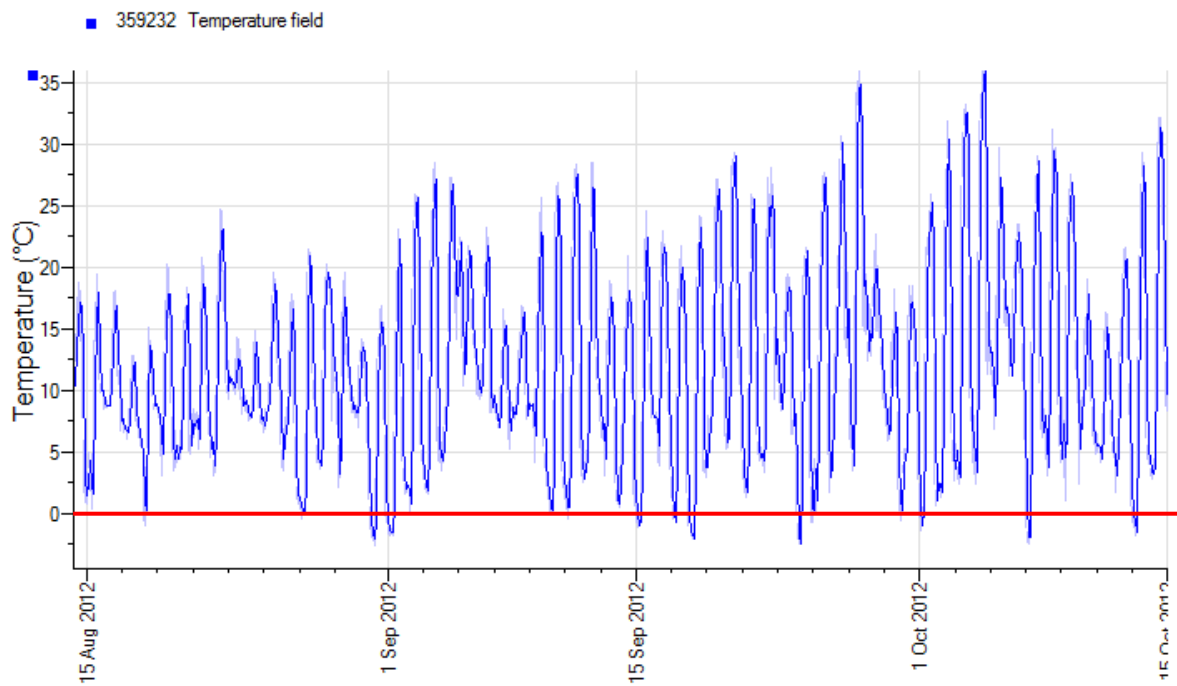
2012 Trangie Canola & Pulse



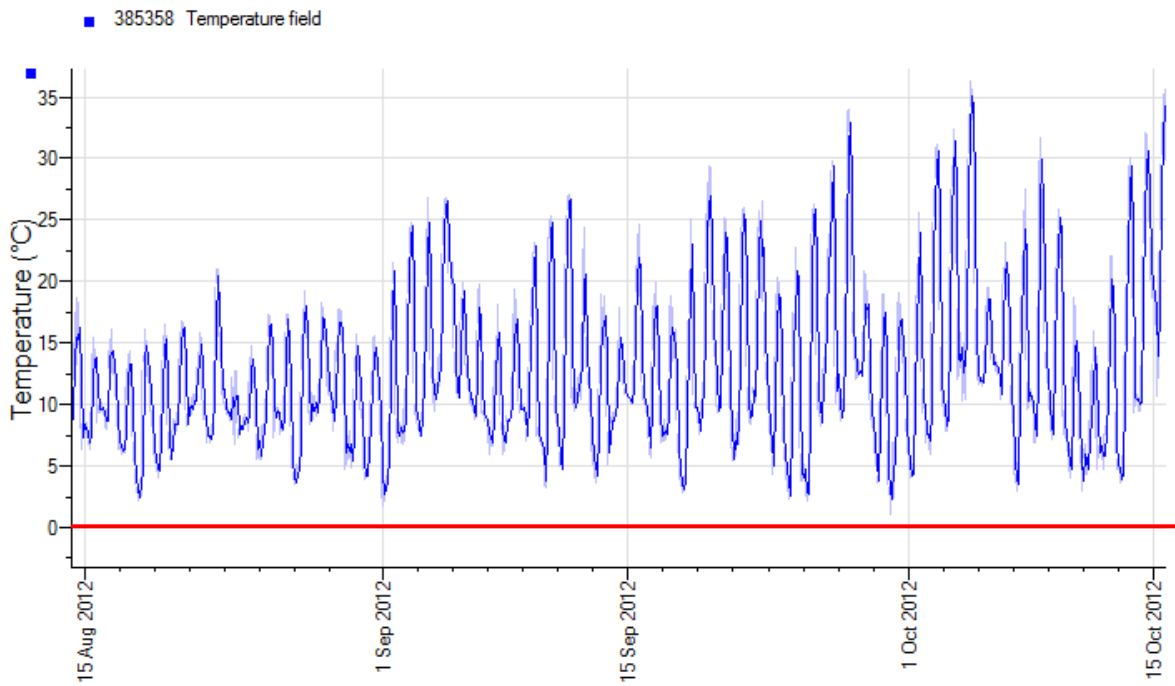
2012 Lameroo Pulses



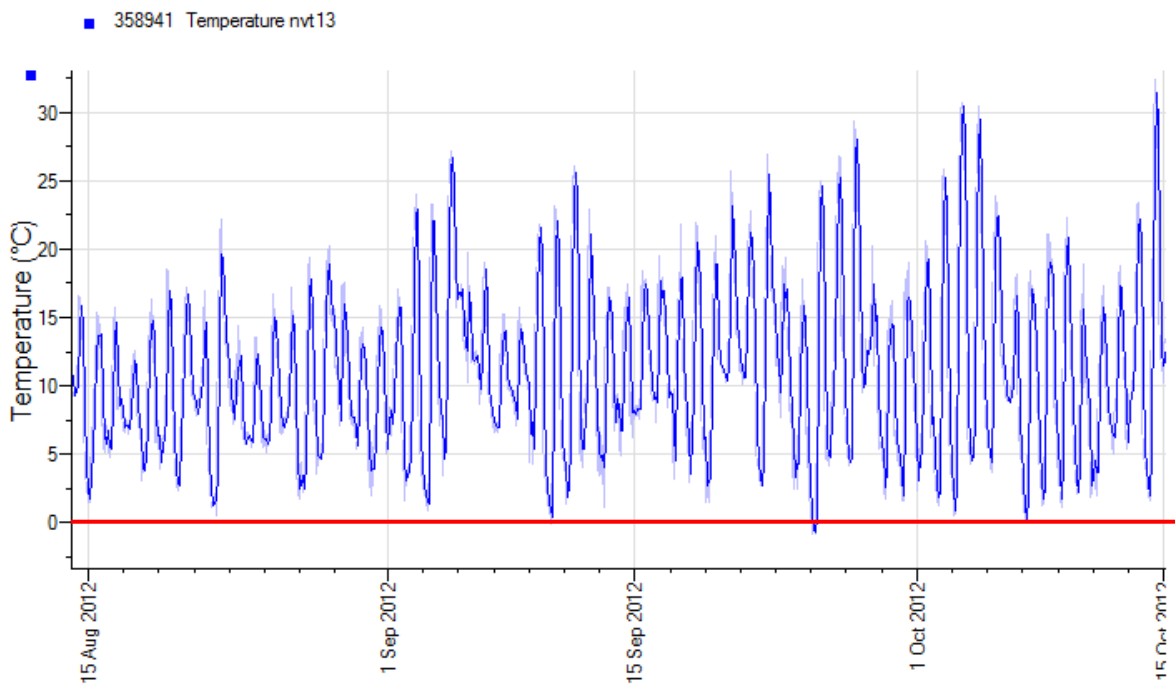
2012 Laura Pulse



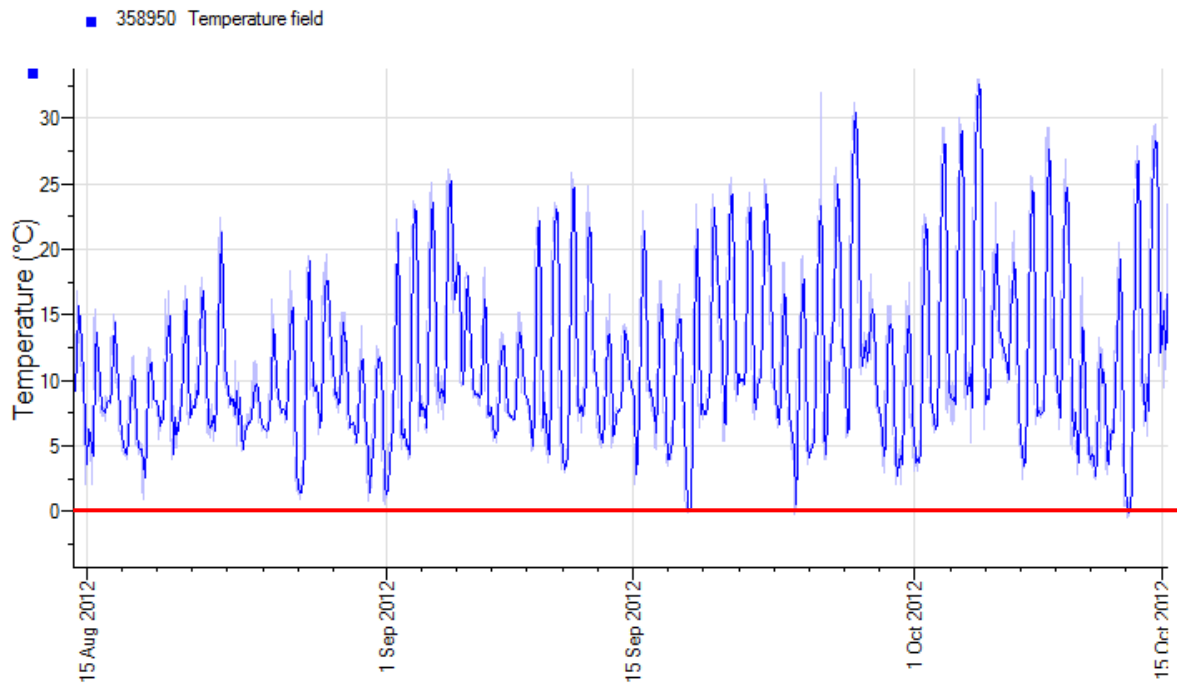
2012 Minlaton Pulse



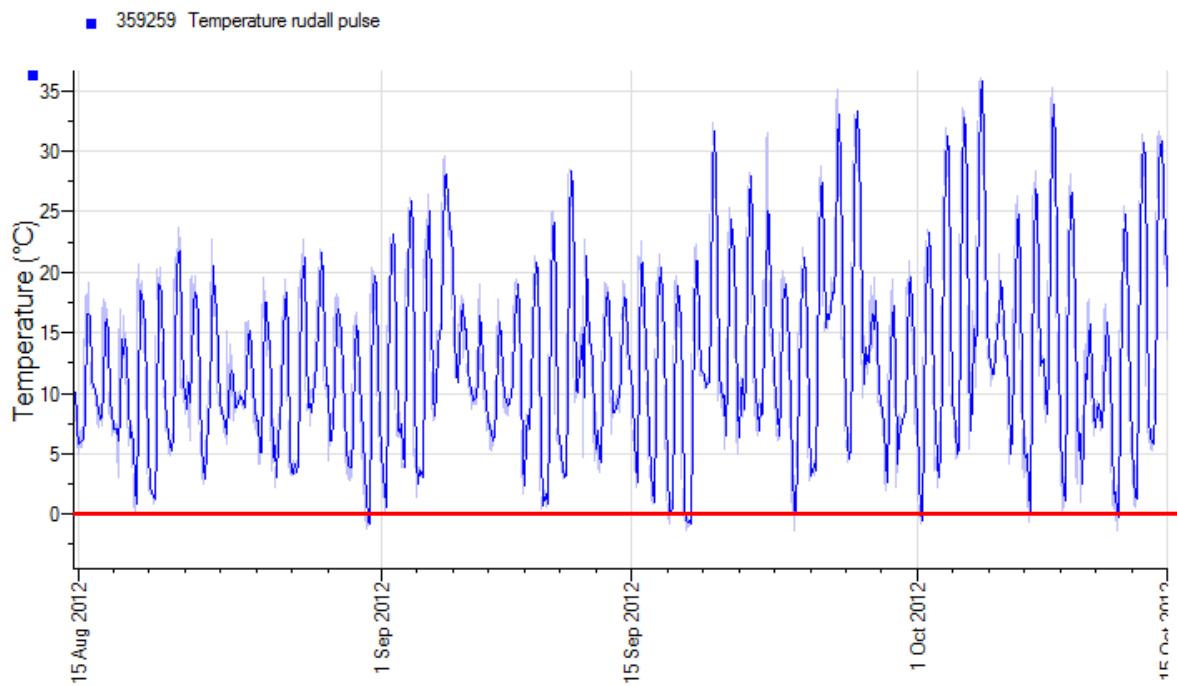
2012 Keith Pulse



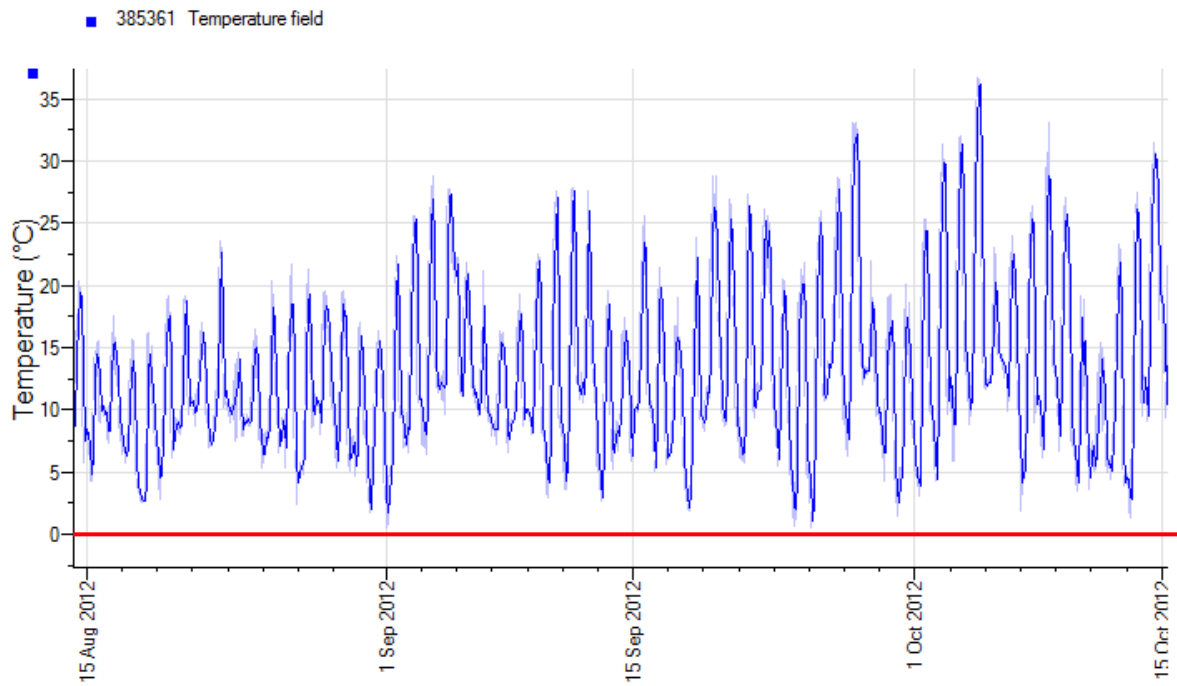
2012 Riverton Pulse



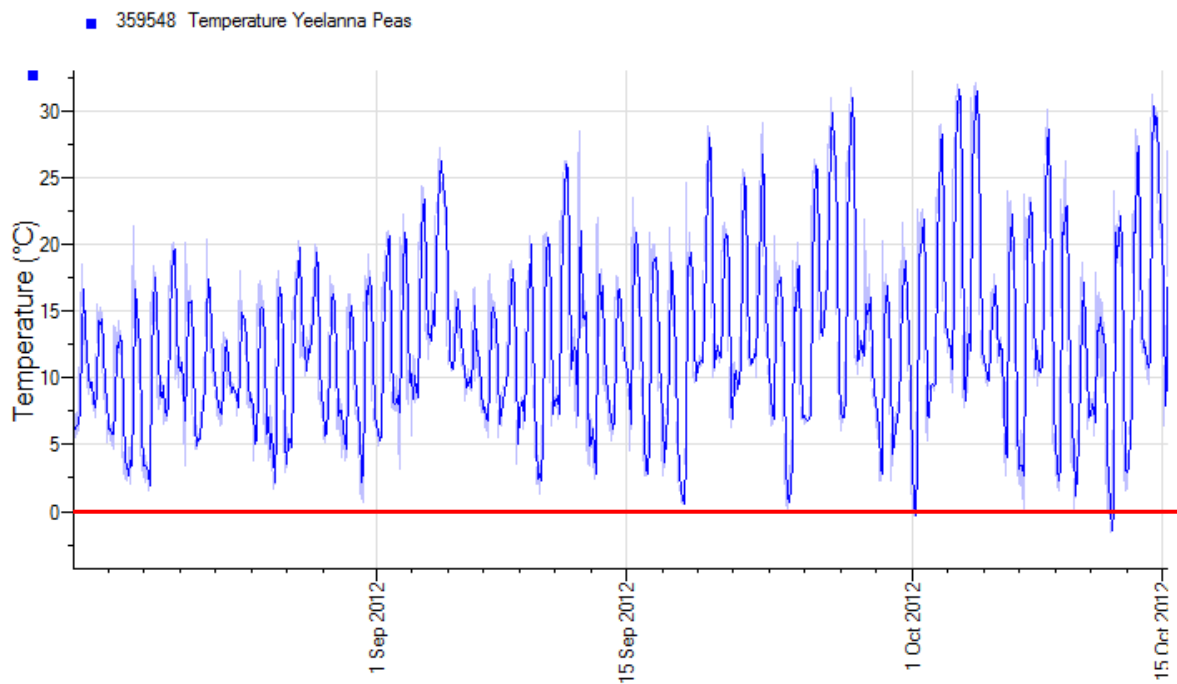
2012 Rudall Pulse



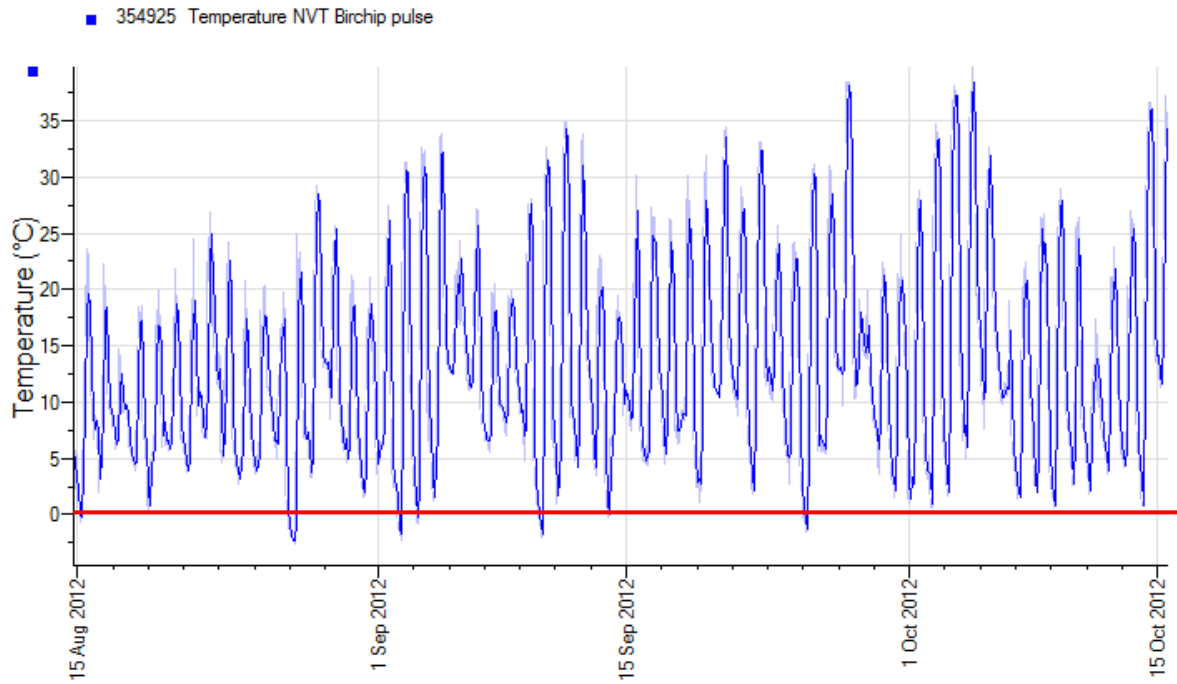
2012 Willamulka Pulse



2012 Yeelanna Pulse

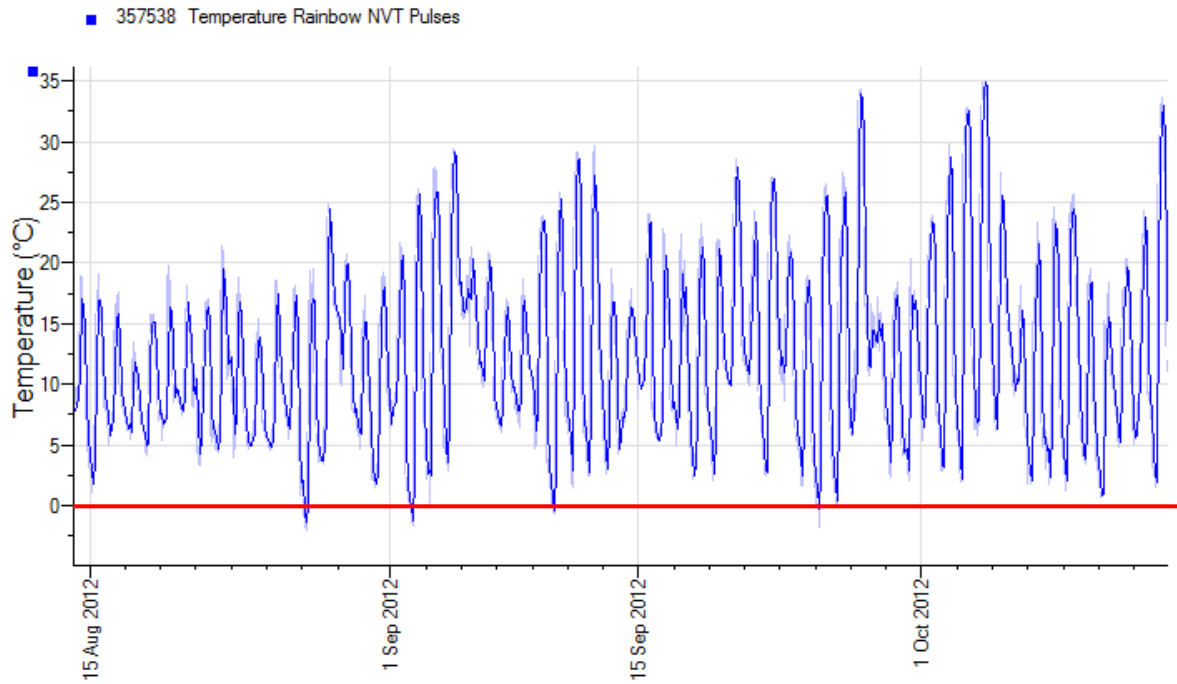


2012 Birchip Pulses

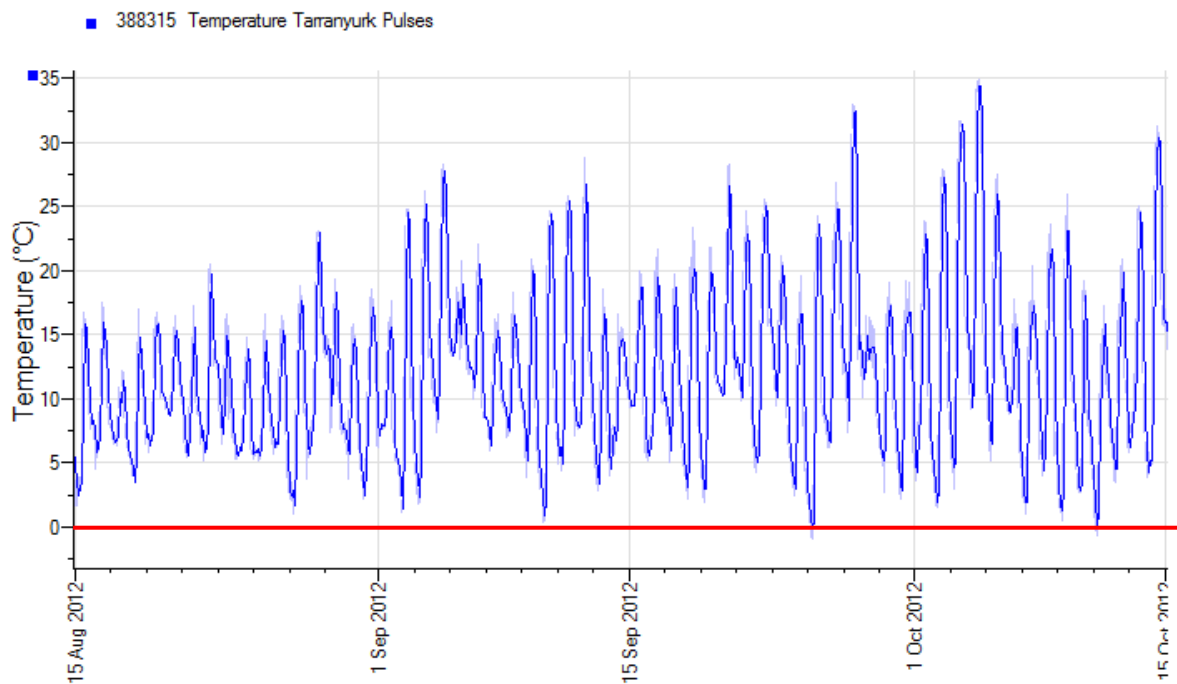


Kaniva Pulse – Data not available at time of publication

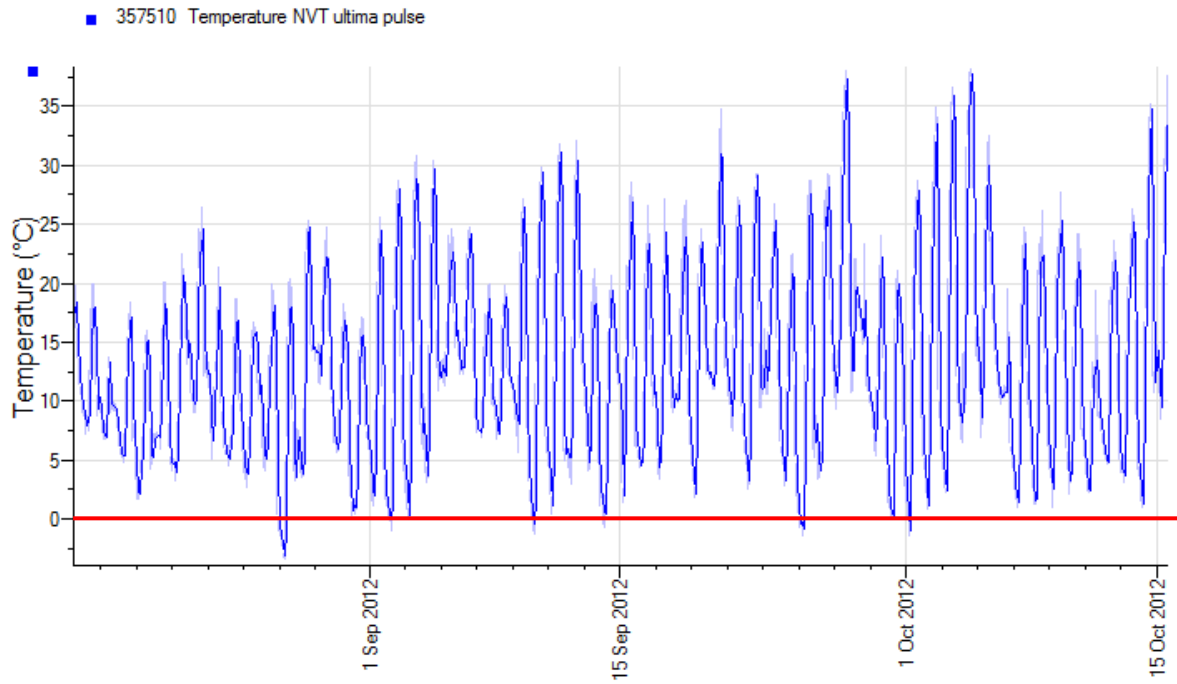
2012 Rainbow Pulse



2012 Tarranyurk Pulses



2012 Ultima Pulse



[Home](#)

Dalwallinu Field Pea – Data not available at time of publication

[Home](#)

Grass Patch Field Pea – Data not available at time of publication

[Home](#)

Holt Rock Field Pea – Data not available at time of publication

[Home](#)

Katanning Field Pea – Data not available at time of publication

[Home](#)

Merredin Field Pea – Data not available at time of publication

[Home](#)

Mingenew Field Pea – Data not available at time of publication

[Home](#)

Pingelly Field Pea – Data not available at time of publication

[Home](#)

Pingrup Field Pea – Data not available at time of publication

[Home](#)

Wittenoom Hills Field Pea – Data not available at time of publication

[Home](#)

Wongan Hills Field Pea – Data not available at time of publication

York Field Pea – Data not available at time of publication