

Introduction:

At most National Variety Trial sites there is a small device - a Tiny Tag - that is designed to capture the air temperature every 15 minutes throughout the growing season. This data can be used by NVT staff in determining the effect of temperature stresses on trials.

On the list of locations below, there are some that are shaded with a blue background. These locations have temperature data available. The remaining sites have no data available either because it has yet to be received, there was no Tiny Tag present at the site or the Tiny Tag malfunctioned.

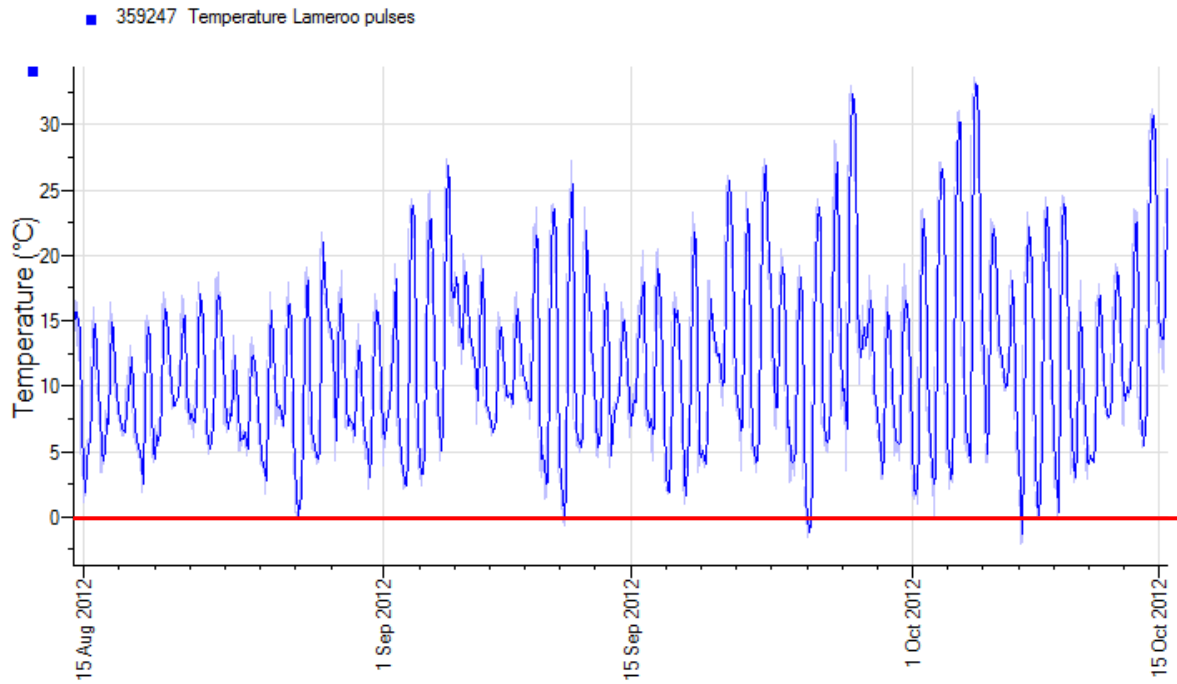
How to use this document:

Click on the location name to view the graph. The text is hyperlinked to the page with the graph for that location. To return to the list and view another location's data, click **home** at the top right corner of the page to return to this page.

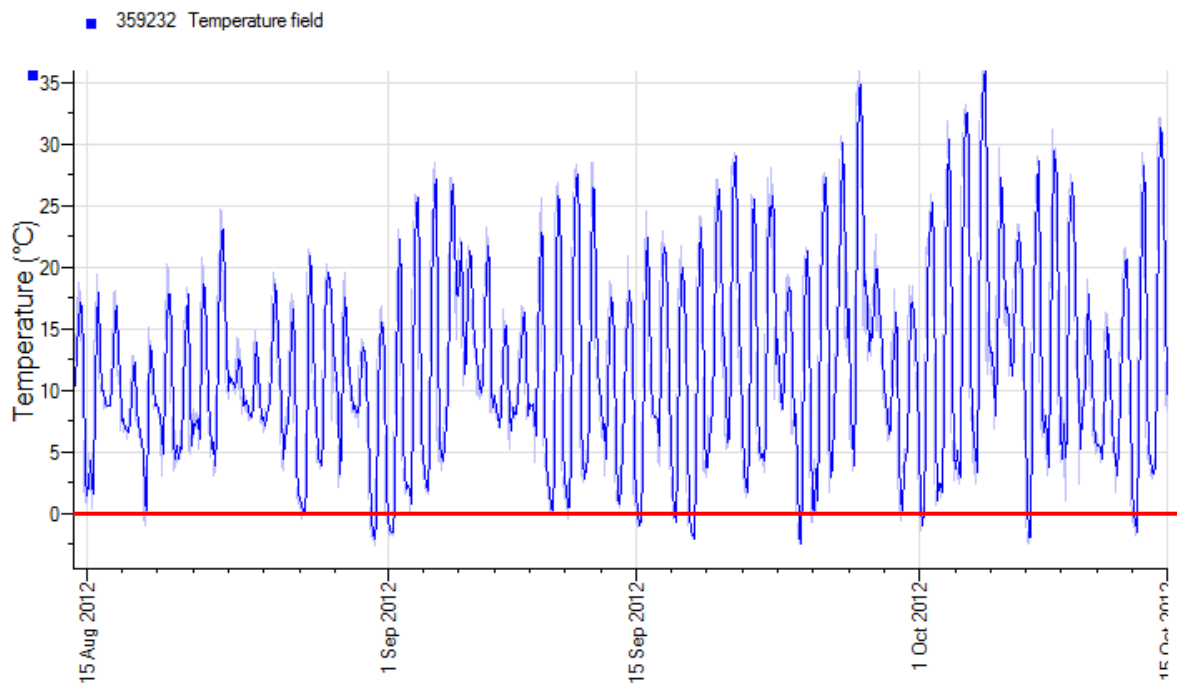
Trial Locations:

| SA | VIC |
|----------------------------|----------------------------|
| Lameroo | Birchip |
| Laura | Kaniva |
| Maitland | Rainbow |
| Minlaton | Tarranyurk |
| Mundulla | Ultima |
| Riverton | |
| Willamulka | |
| Yeelanna | |

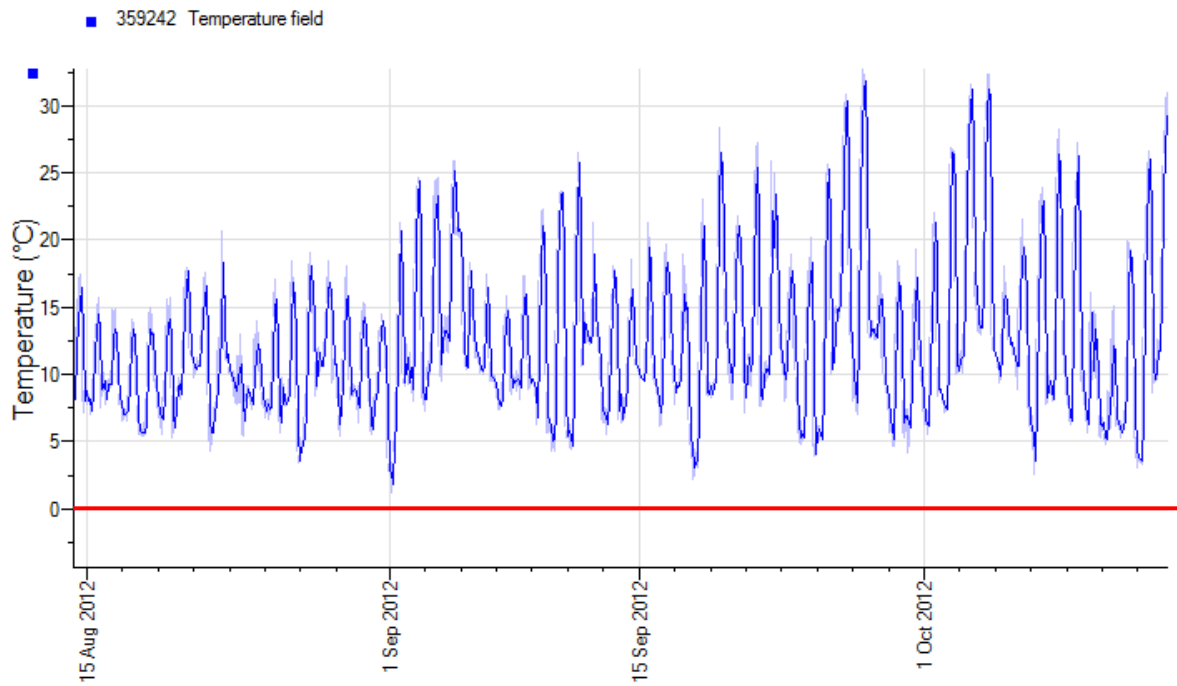
2012 Lameroo Pulses



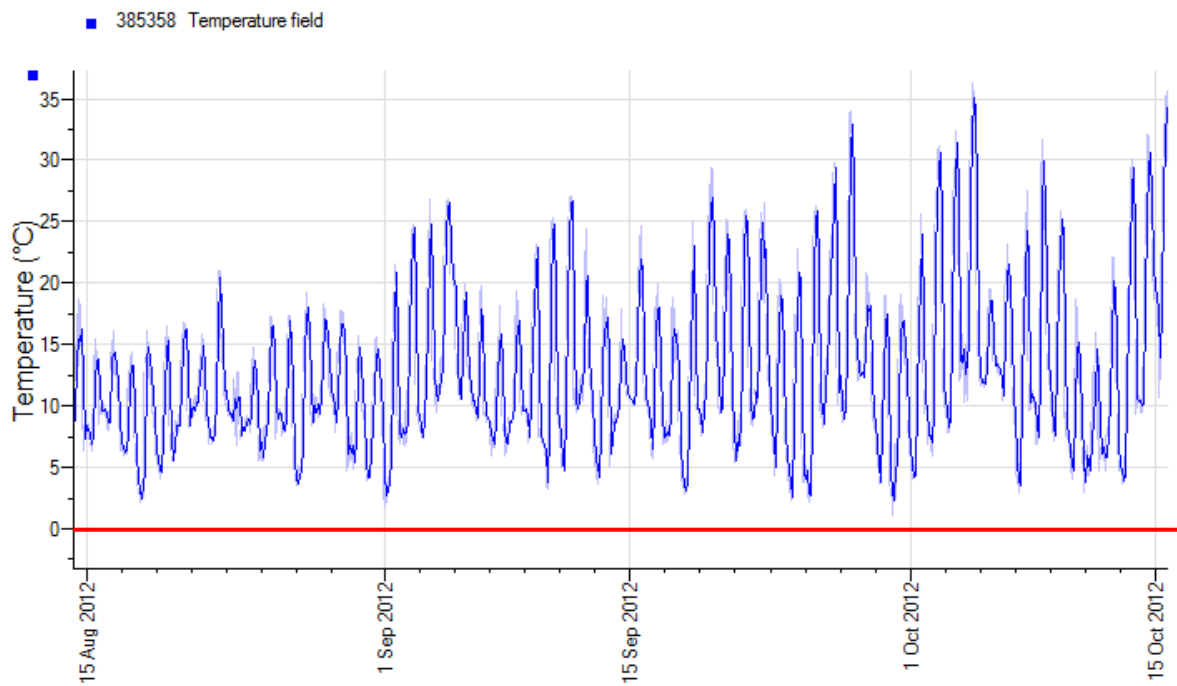
2012 Laura Pulse



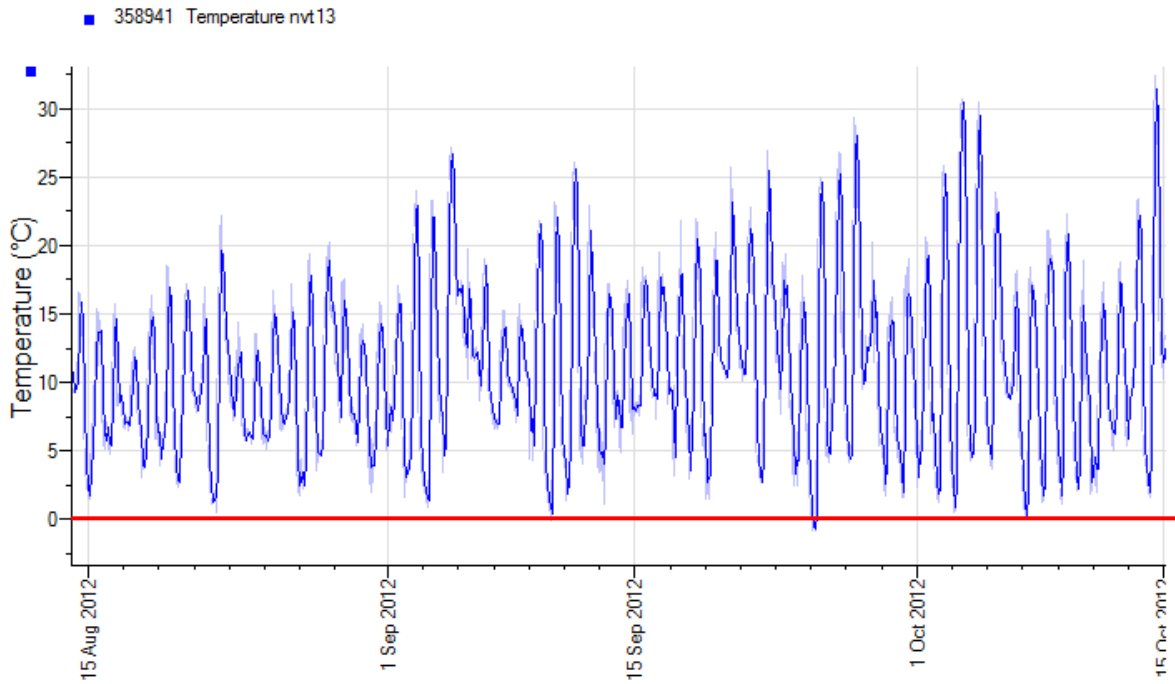
2012 Maitland Pulse



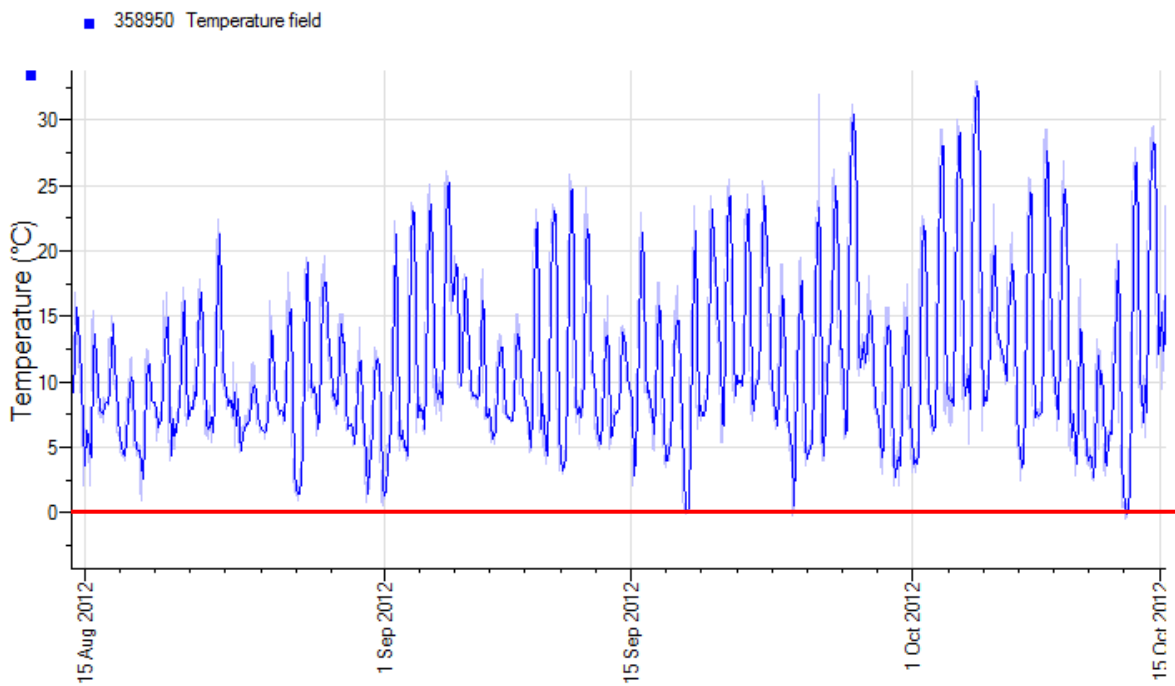
2012 Minlaton Pulse



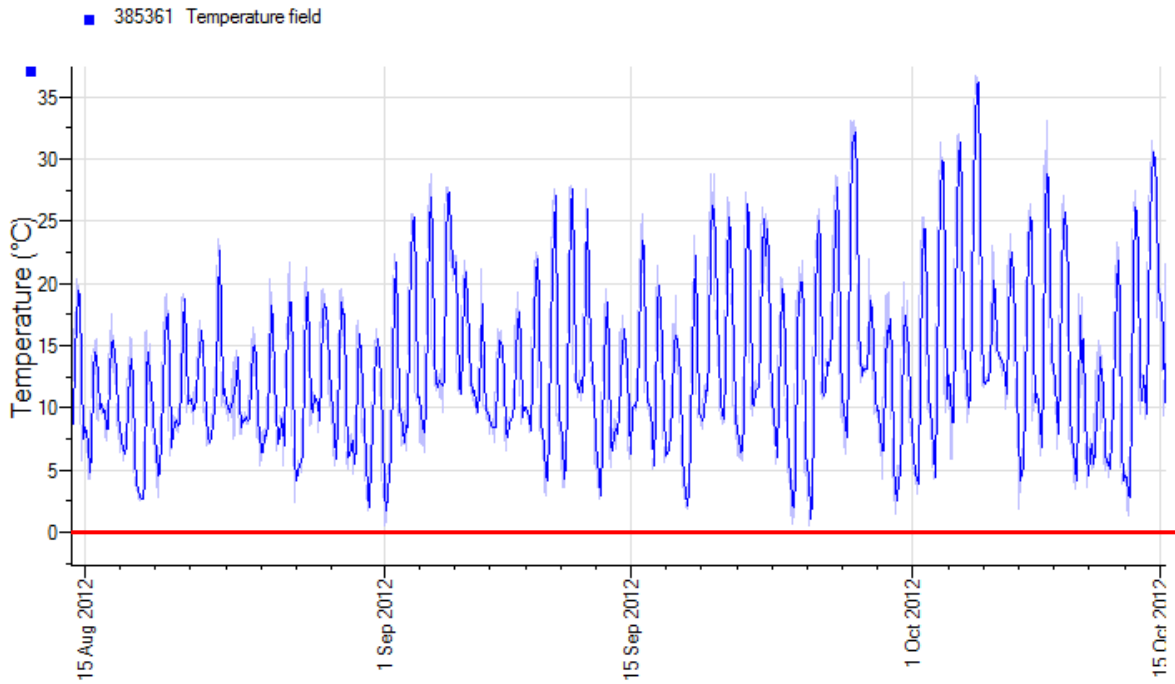
2012 Keith Pulse



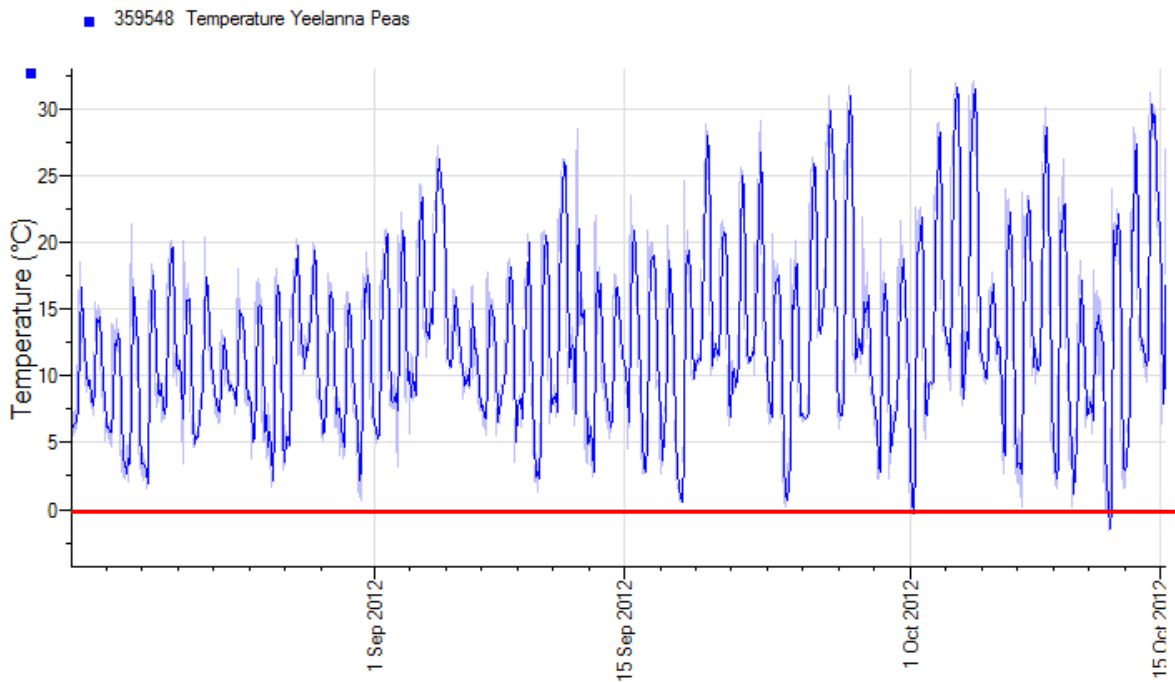
2012 Riverton Pulse



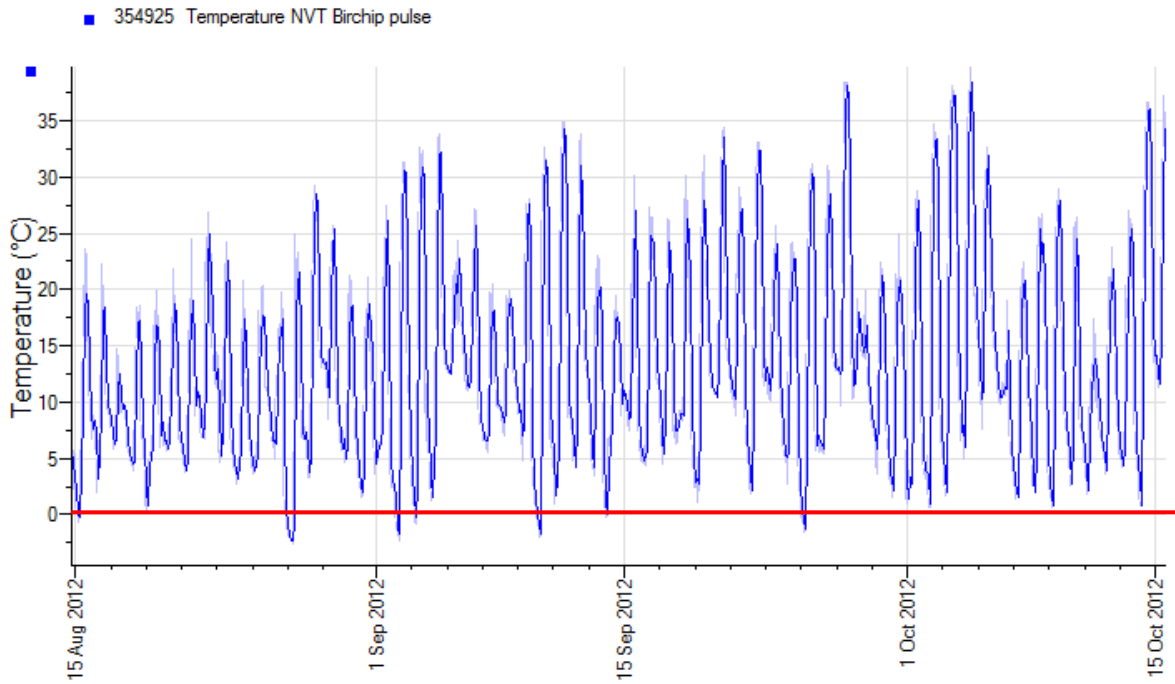
2012 Willamulka Pulse



2012 Yeelanna Pulse

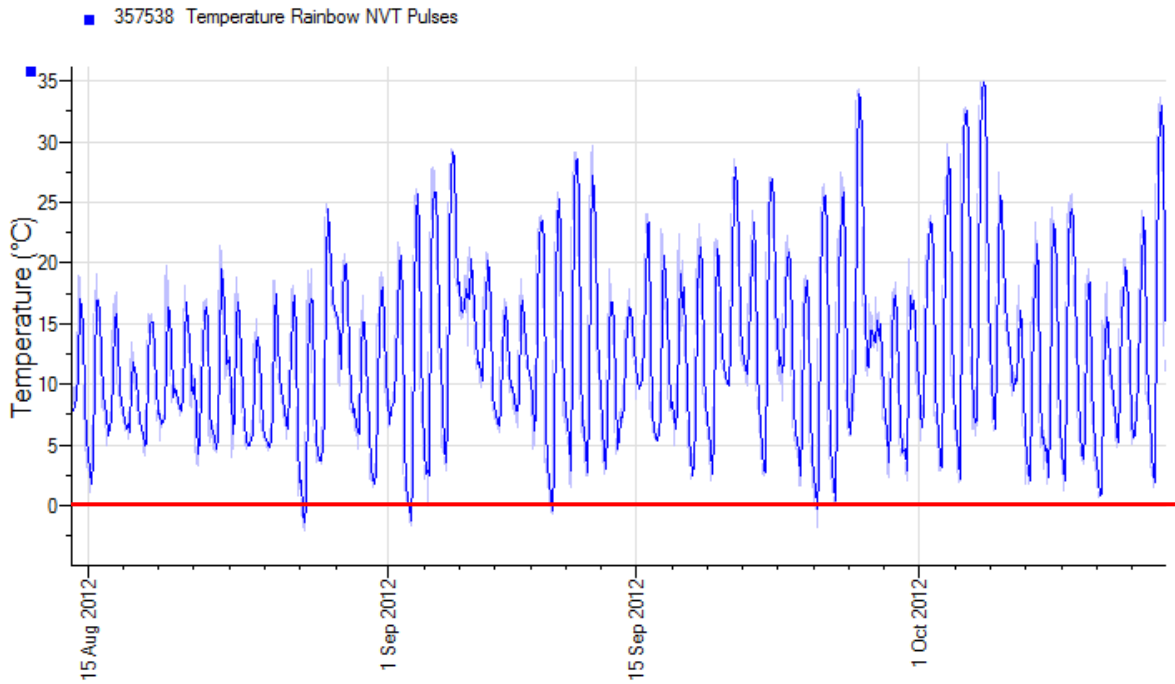


2012 Birchip Pulses

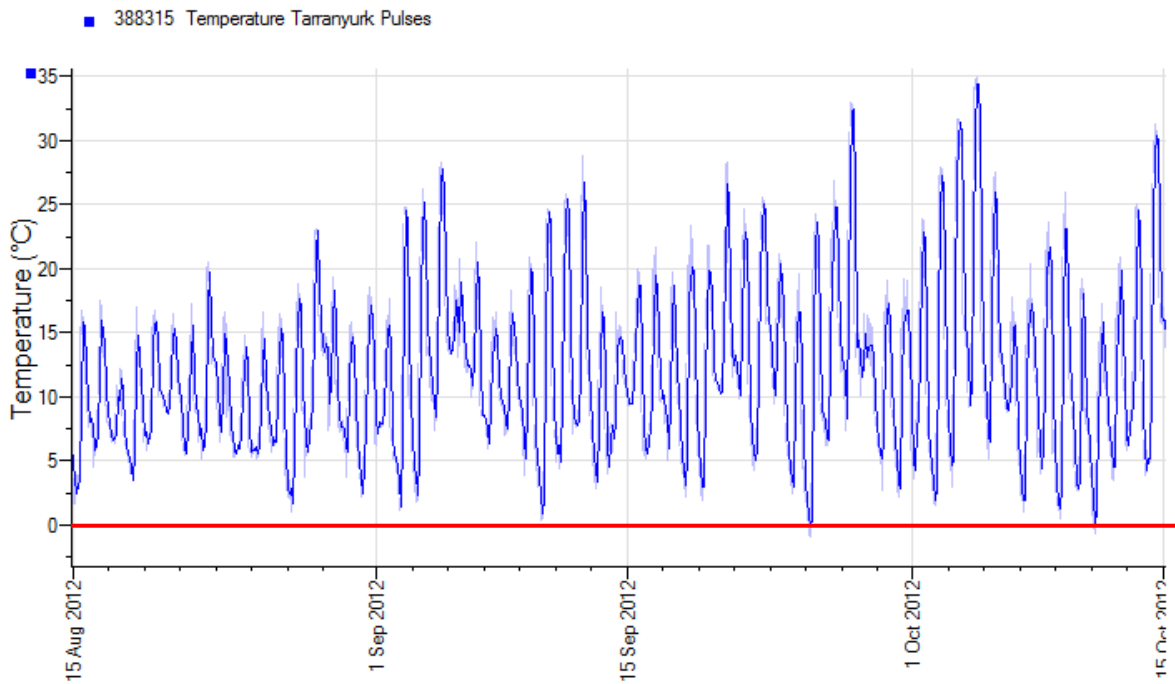


Kaniva Lentil – Data not available at time of publication

2012 Rainbow Pulse



2012 Tarranyurk Pulses



2012 Ultima Pulse

