

Introduction:

At most National Variety Trial sites there is a small device - a Tiny Tag - that is designed to capture the air temperature every 15 minutes throughout the growing season. This data can be used by NVT staff in determining the effect of temperature stresses on trials.

On the list of locations below, there are some that are shaded with a blue background. These locations have temperature data available. The remaining sites have no data available either because it has yet to be received, there was no Tiny Tag present at the site or the Tiny Tag malfunctioned.

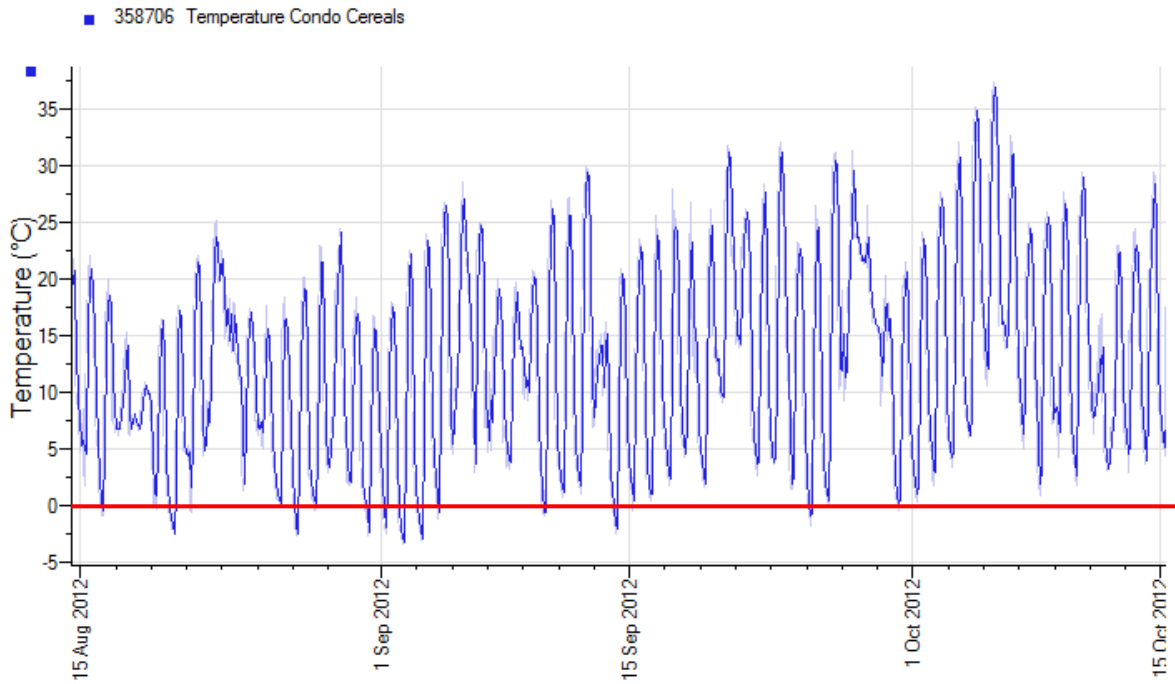
How to use this document:

Click on the location name to view the graph. The text is hyperlinked to the page with the graph for that location. To return to the list and view another location’s data, click **home** at the top right corner of the page to return to this page.

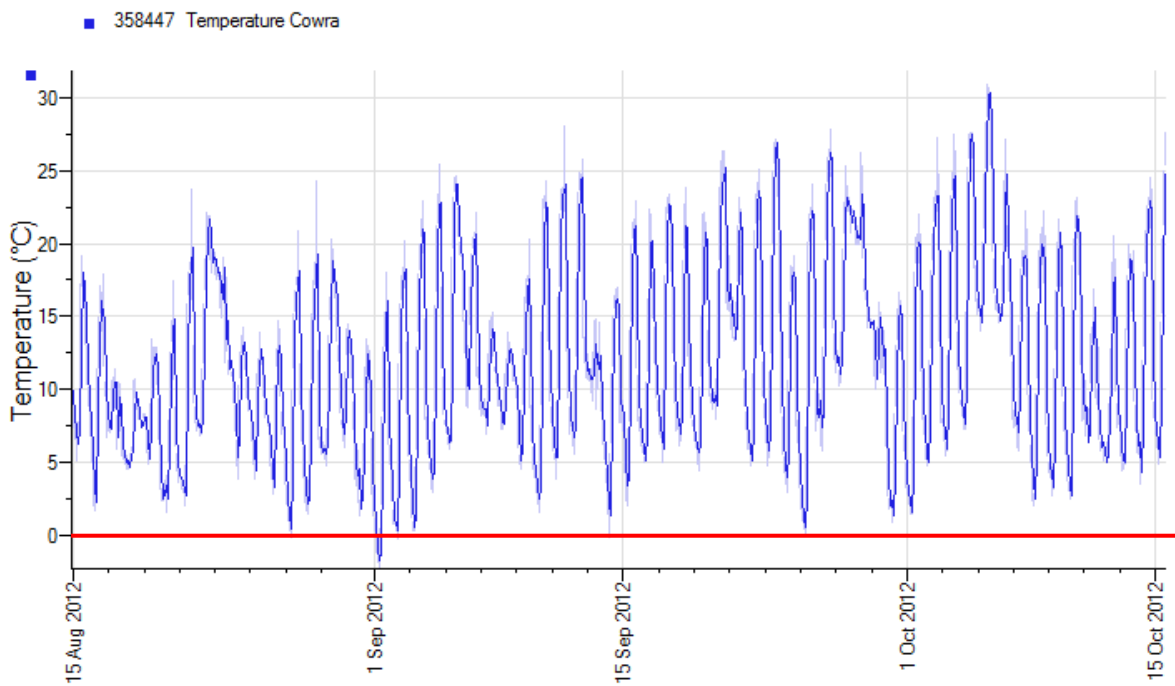
Trial Locations:

NSW	SA	VIC	WA
Condobolin	Bordertown	Diggora	Arthur River
Cowra	Crystal Brook	Dookie	Cunderdin
Gerogery	Frances	Eastville	Esperance
Oaklands	Greenpatch	Hamilton	Katanning
Quandialla	Nunjikompita	Streatham	Merredin
Wellington	Paskeville	Yarrawonga	Mt Barker
	Waikerie		Pingelly
			Williams
			Wongan Hills
			York

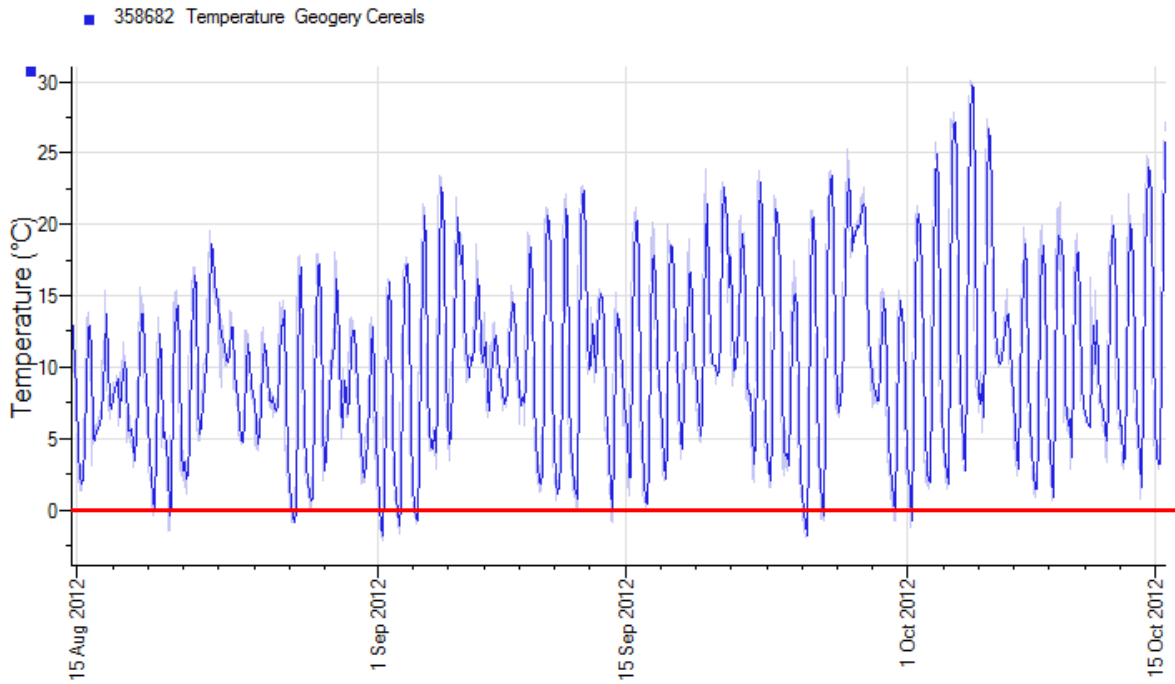
2012 Condobolin Cereals



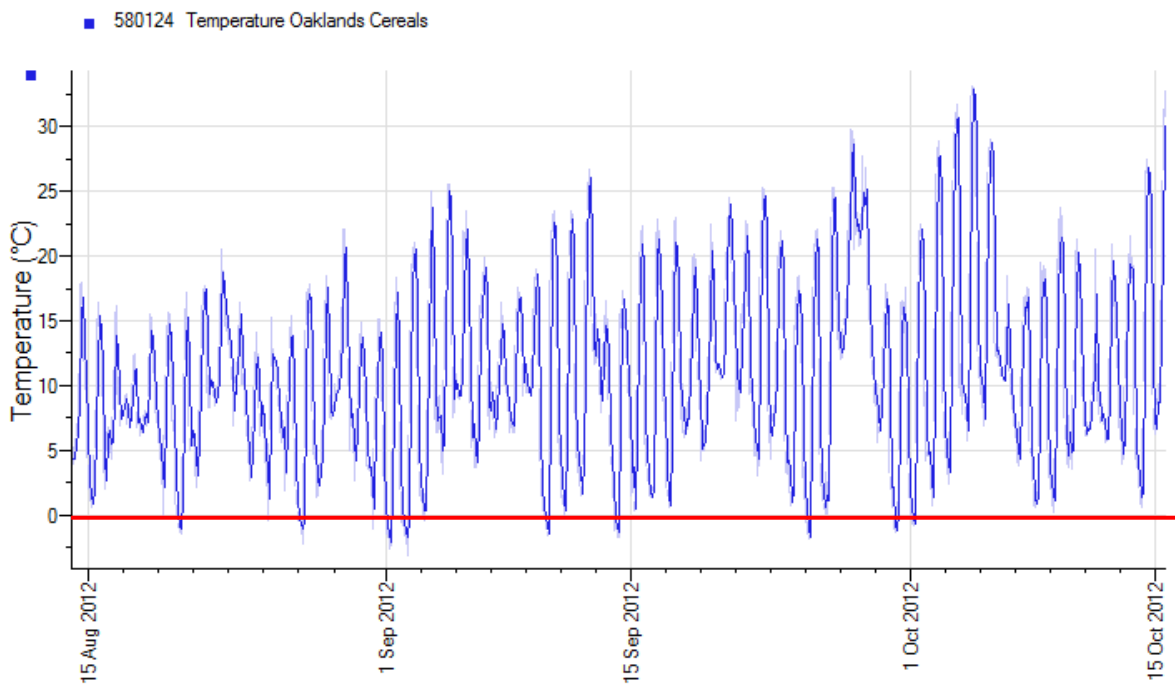
2012 Cowra Cereals



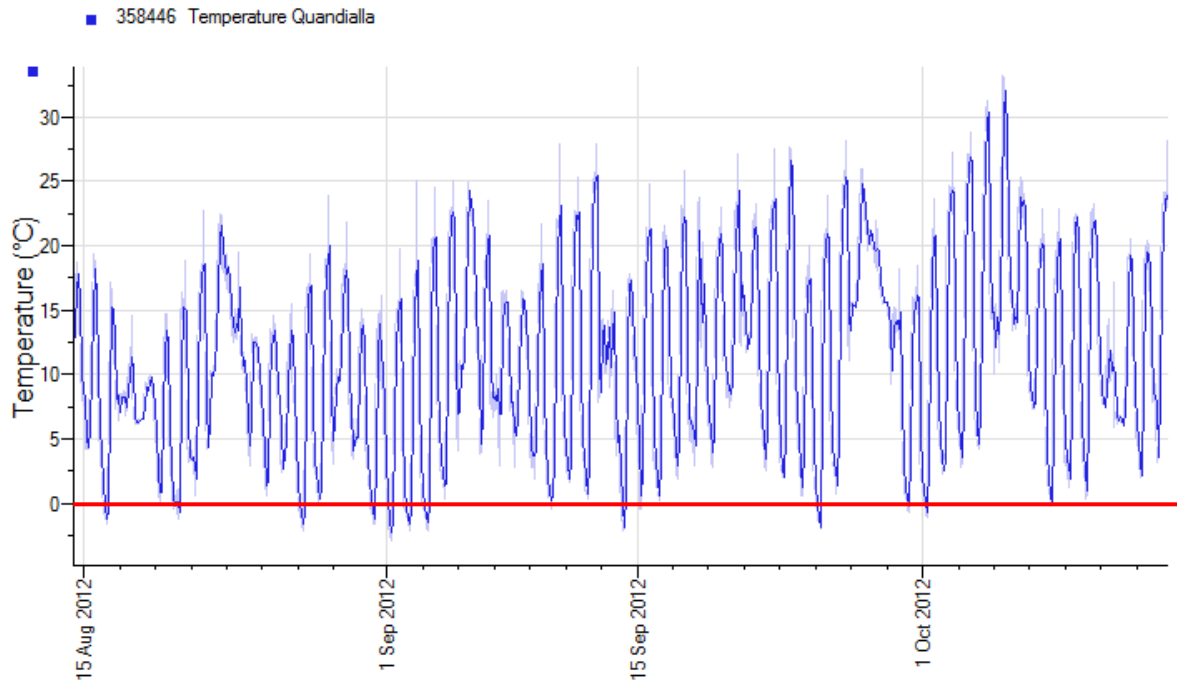
2012 Geogery Cereals



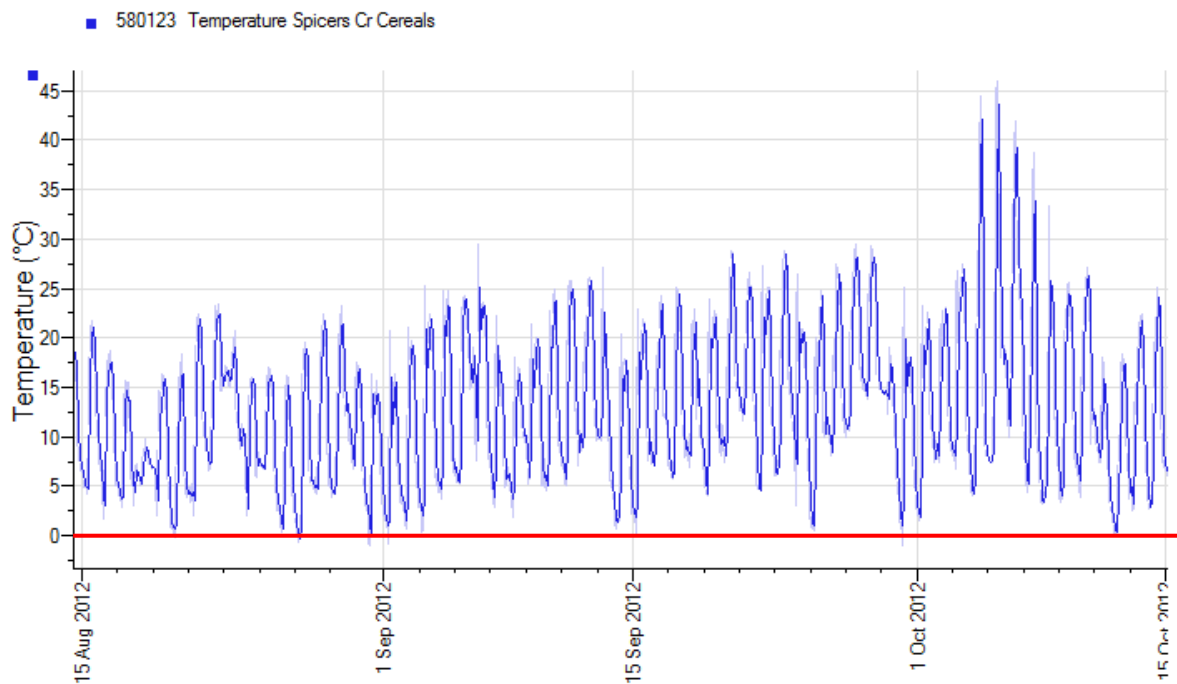
2012 Oaklands Cereals



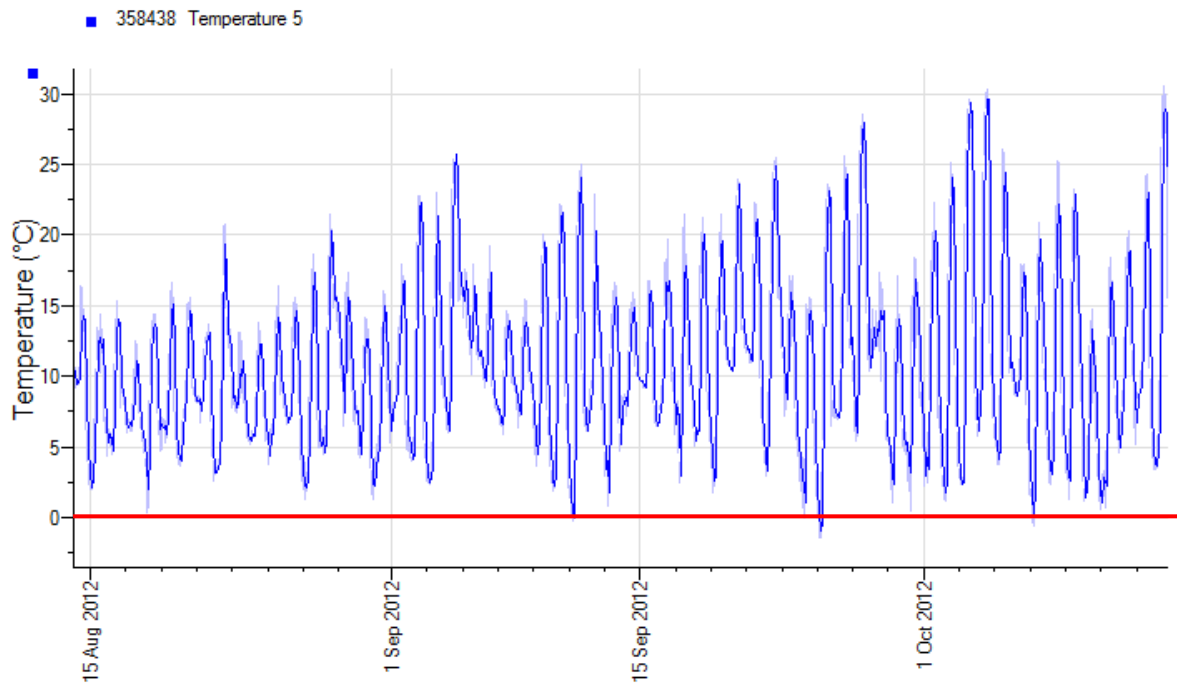
2012 Quandialla Cereals



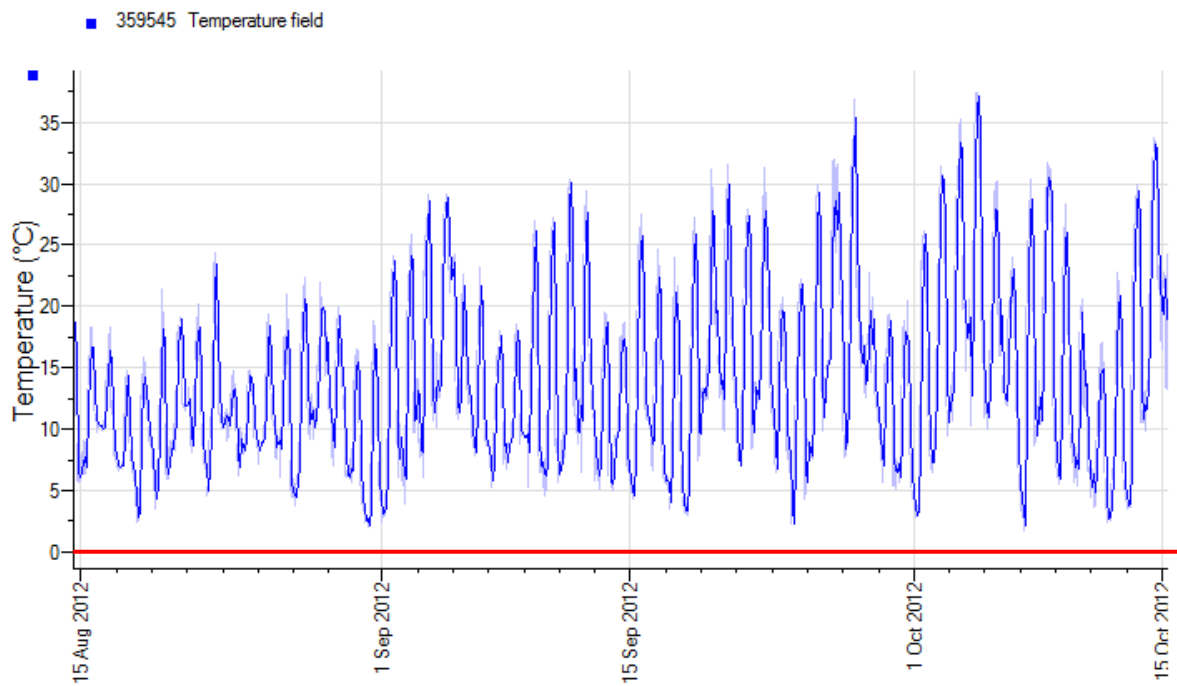
2012 Wellington Cereals



2012 Bordertown Cereals

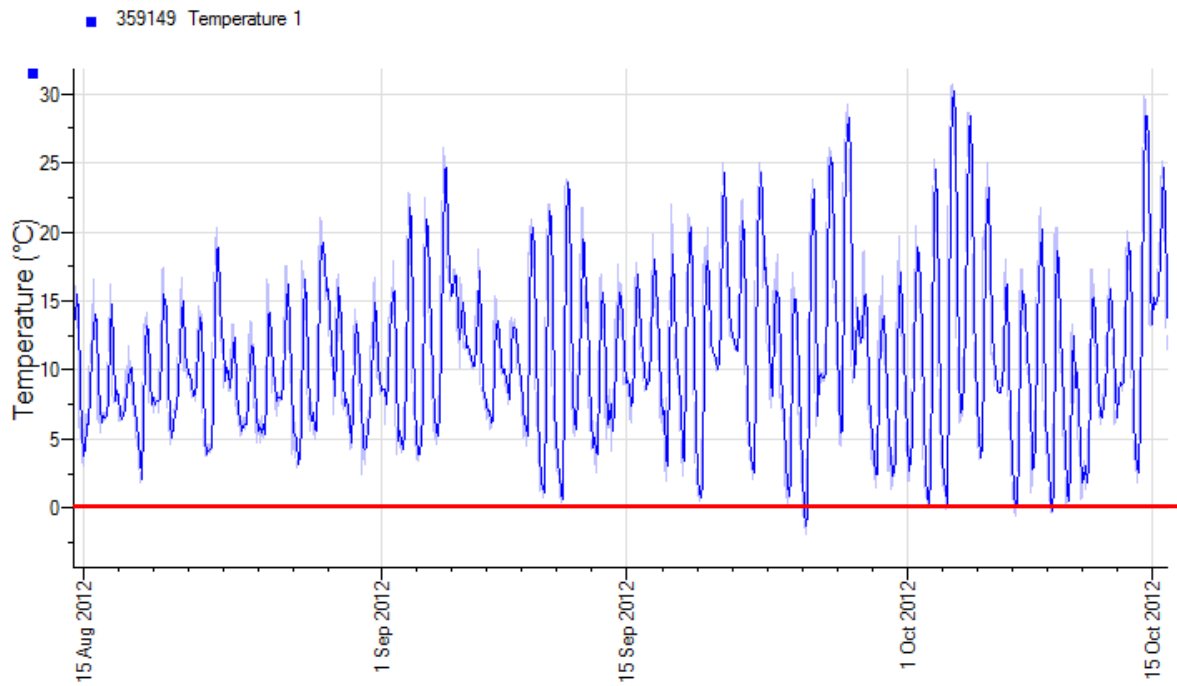


2012 Crystal Brook Cereals



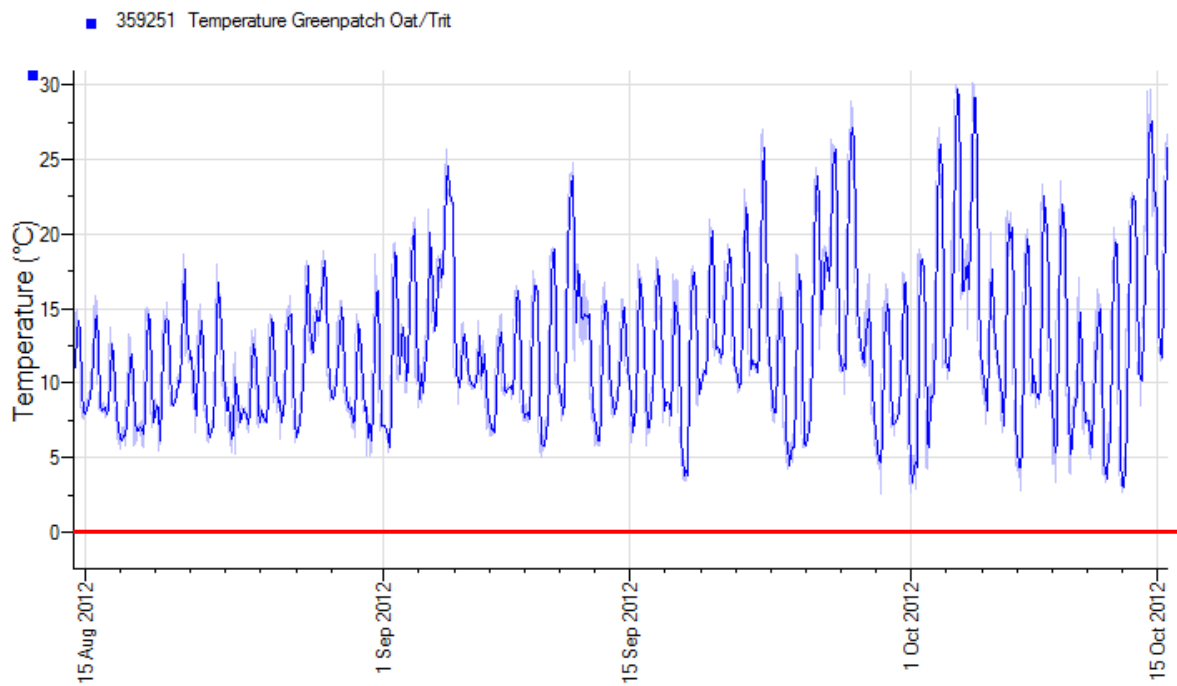
[Home](#)

2012 Frances Canola & Oat

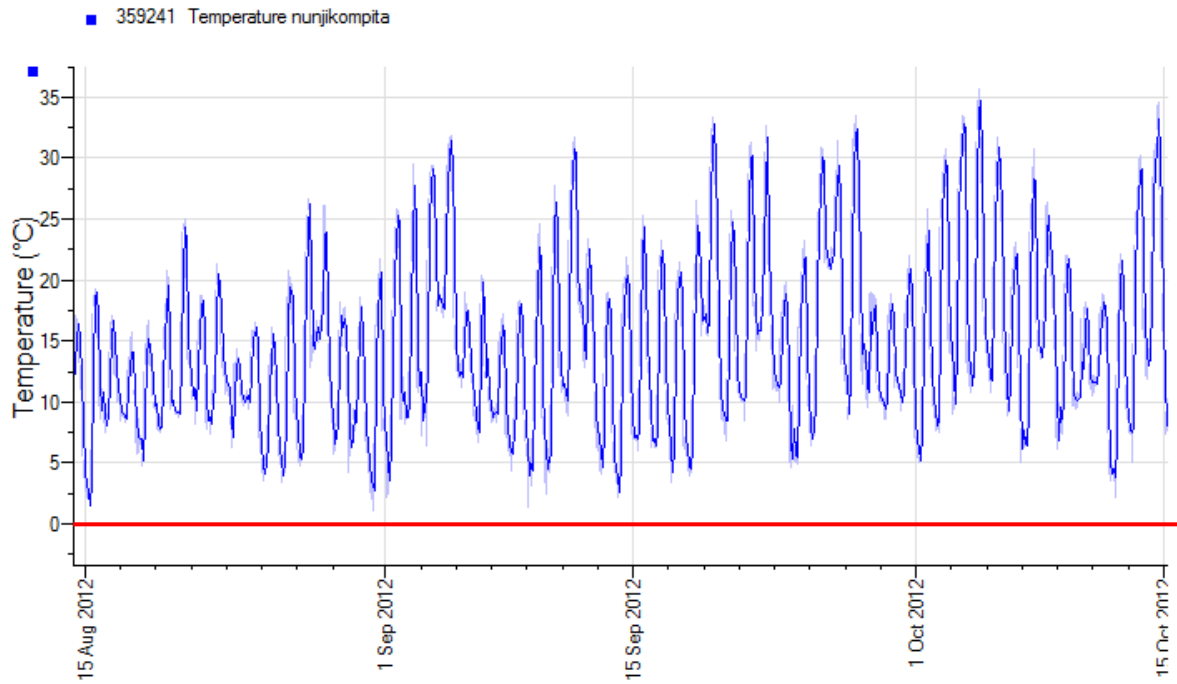


[Home](#)

2012 Greenpatch Cereals

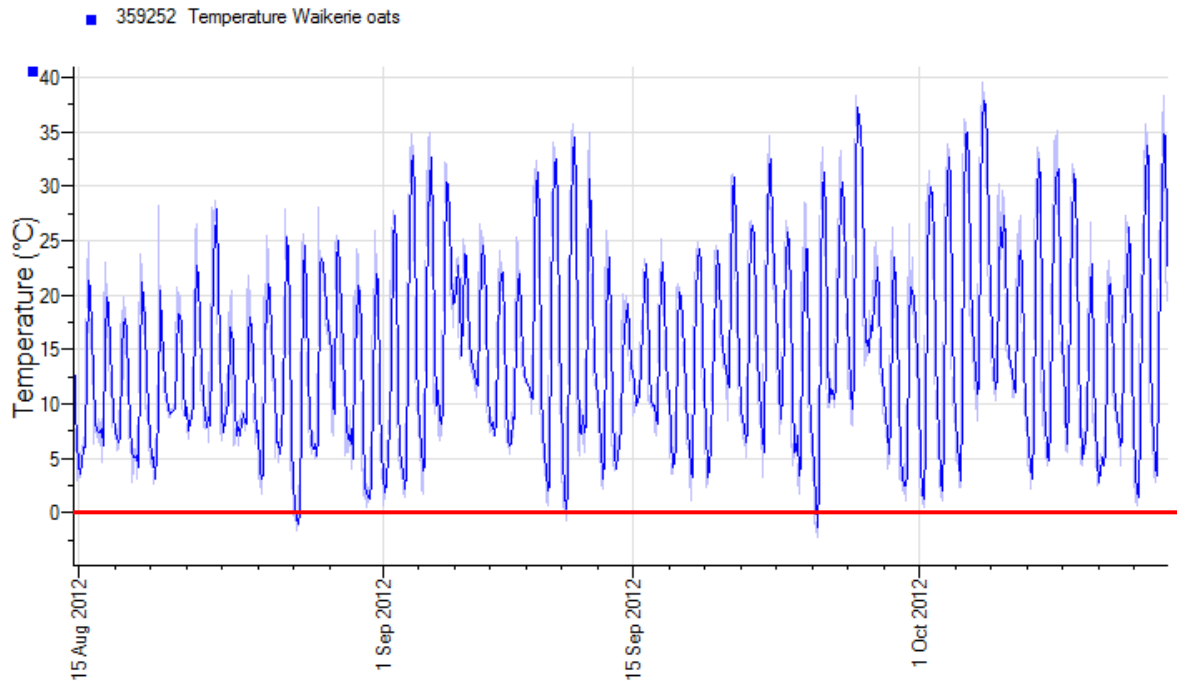


2012 Nunjikompta Cereals

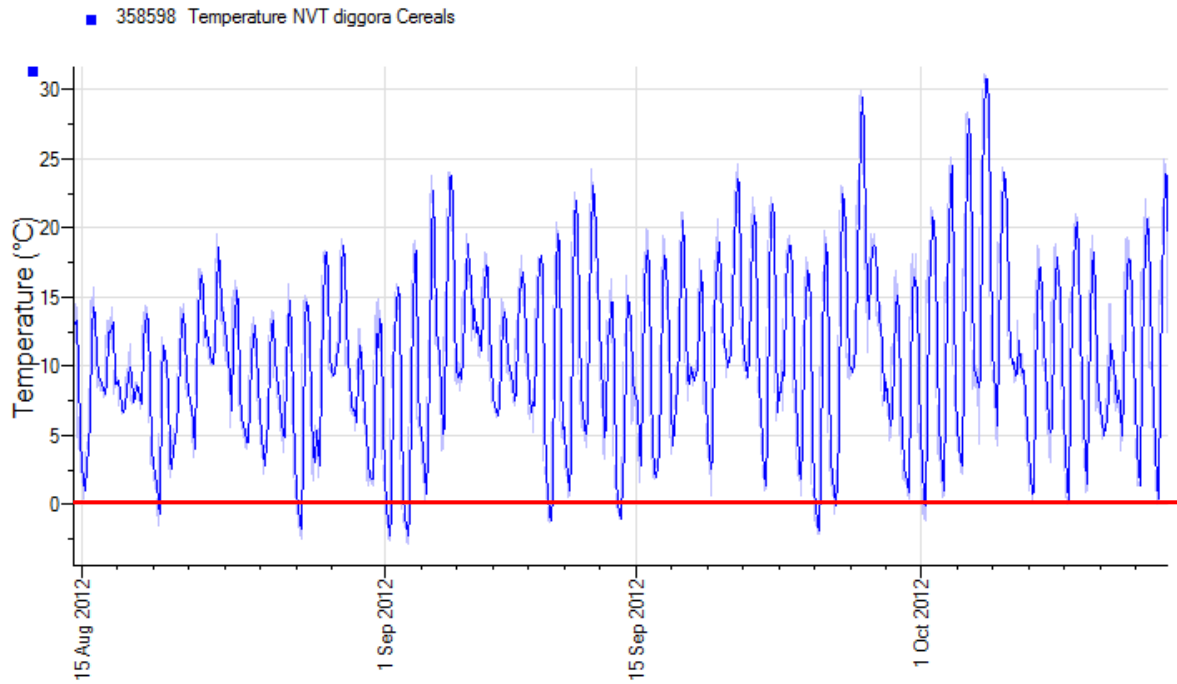


Paskeville Oat – Data not available at time of publication

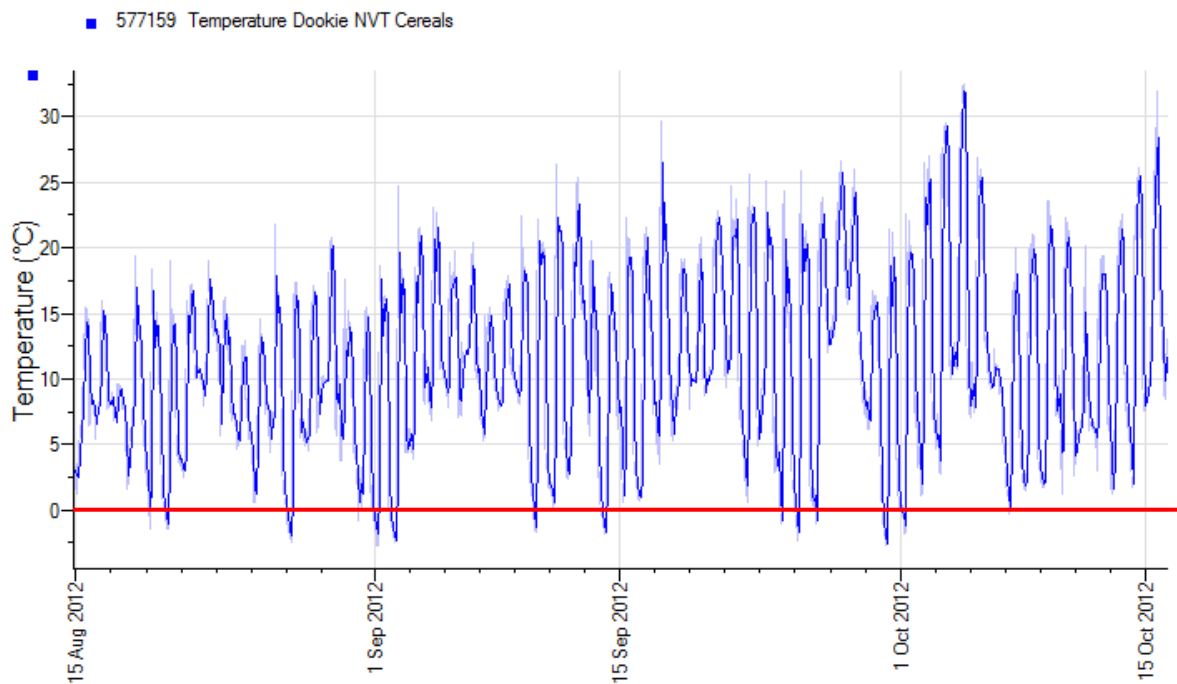
2012 Waikerie Oats



2012 Diggora Cereals



2012 Dookie Cereals

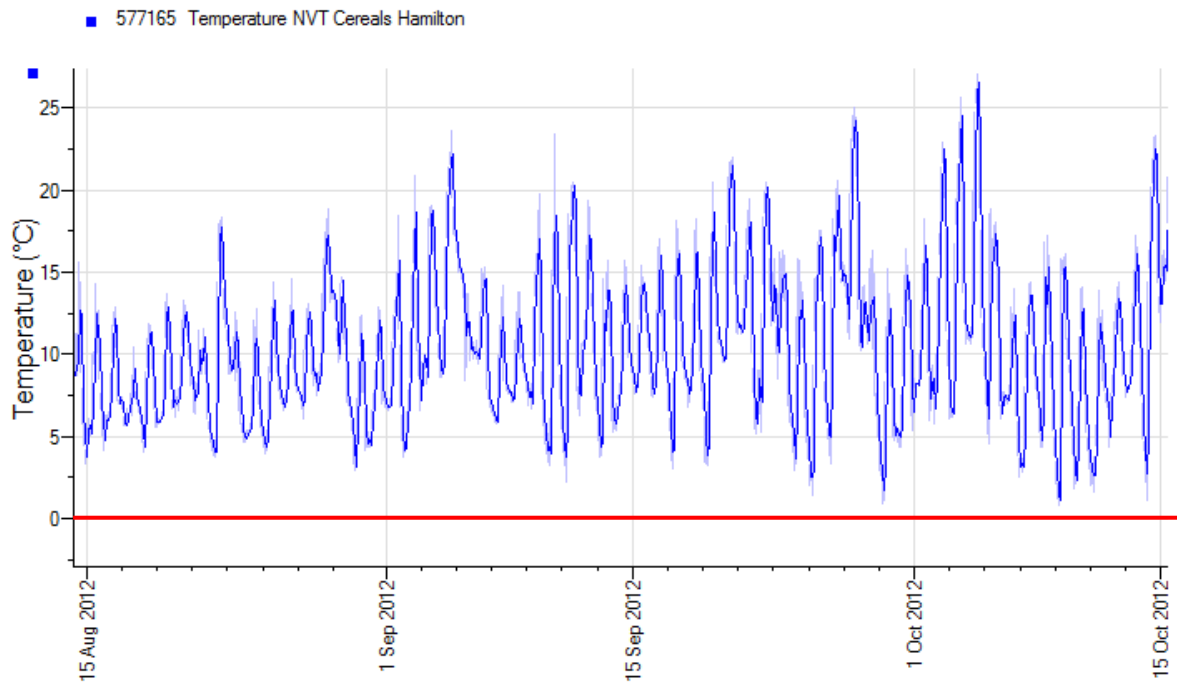


[Home](#)

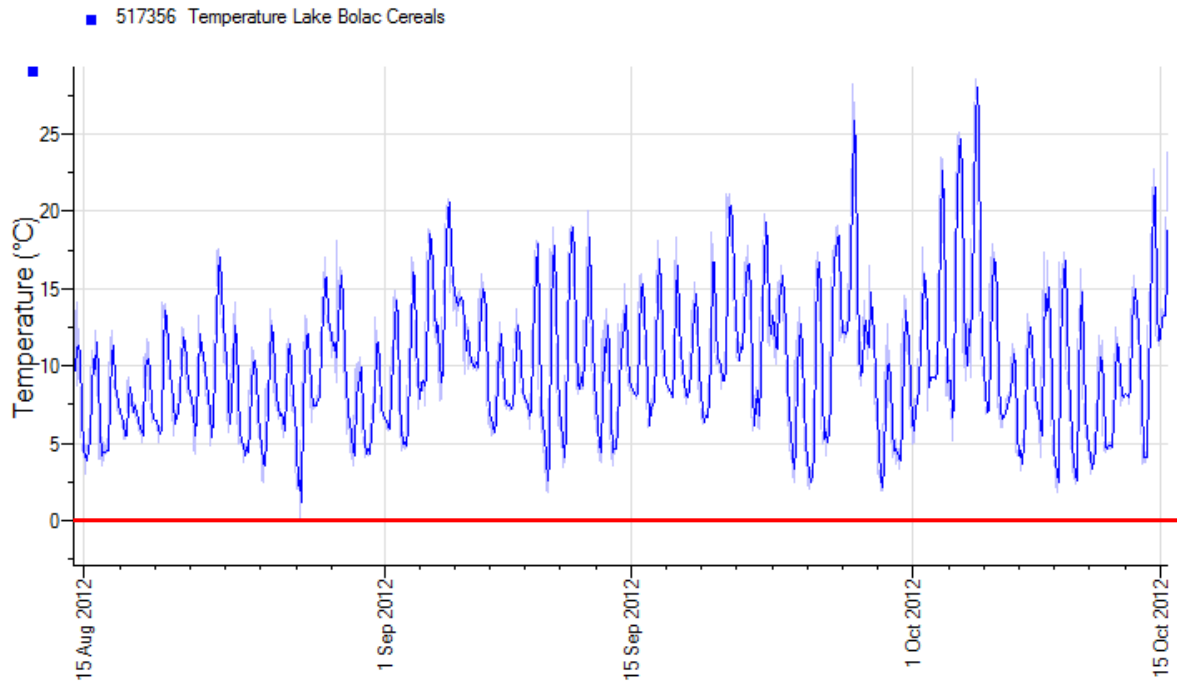
Eastville Oat – Data not available at time of publication

[Home](#)

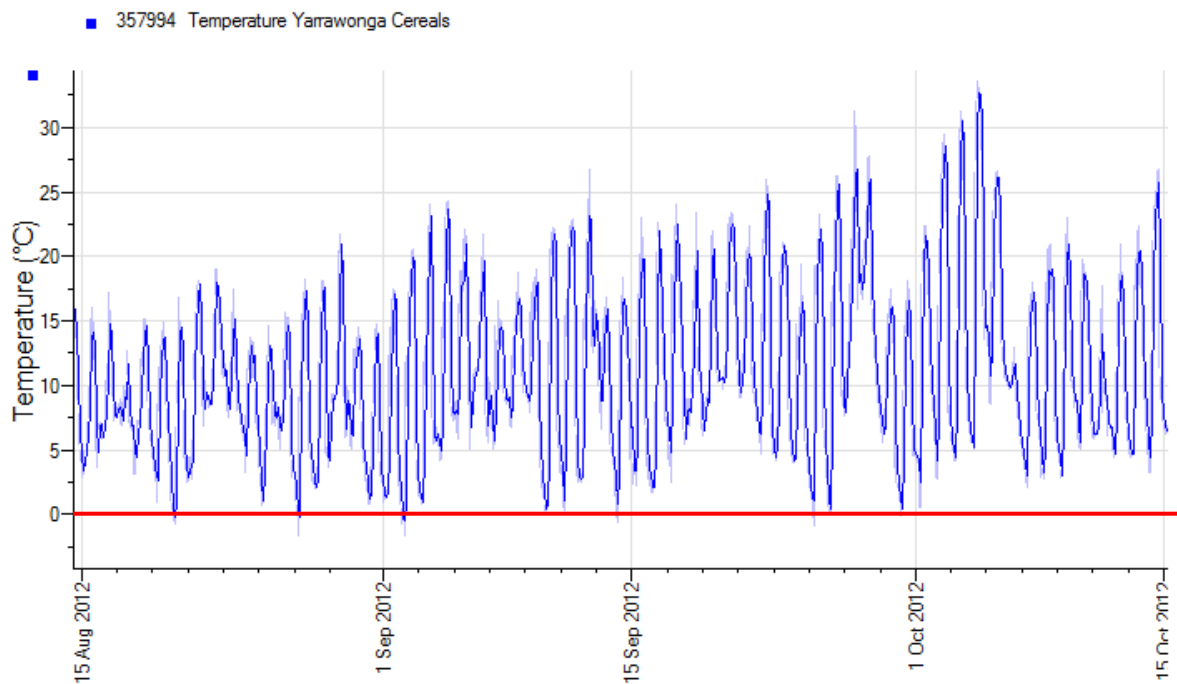
2012 Hamilton Cereals



2012 Streatham Cereals



2012 Yarrawonga Cereals



[Home](#)

Arthur River Oat – Data not available at time of publication

[Home](#)

Cunderdin Oat – Data not available at time of publication

[Home](#)

Esperance Oat – Data not available at time of publication

[Home](#)

Katanning Oat – Data not available at time of publication

[Home](#)

Merredin Oat – Data not available at time of publication

[Home](#)

Mt Barker Oat – Data not available at time of publication

[Home](#)

Pingelly Oat – Data not available at time of publication

[Home](#)

Williams Oat – Data not available at time of publication

[Home](#)

Wongan Hills Oat – Data not available at time of publication

[Home](#)

York Oat – Data not available at time of publication