

Introduction:

At most National Variety Trial sites there is a small device - a Tiny Tag - that is designed to capture the air temperature every 15 minutes throughout the growing season. This data can be used by NVT staff in determining the effect of temperature stresses on trials.

On the list of locations below, there are some that are shaded with a blue background. These locations have temperature data available. The remaining sites have no data available either because it has yet to be received, there was no Tiny Tag present at the site or the Tiny Tag malfunctioned.

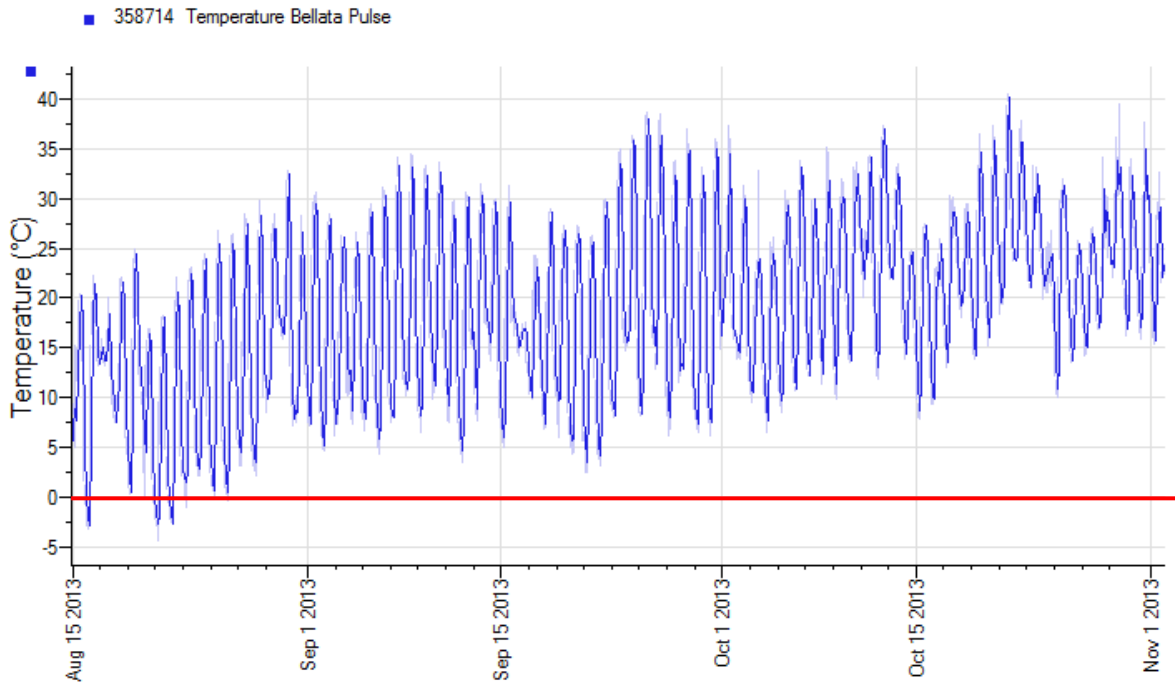
How to use this document:

Click on the location name to view the graph. The text is hyperlinked to the page with the graph for that location. To return to the list and view another location’s data, click **home** at the top right corner of the page to return to this page.

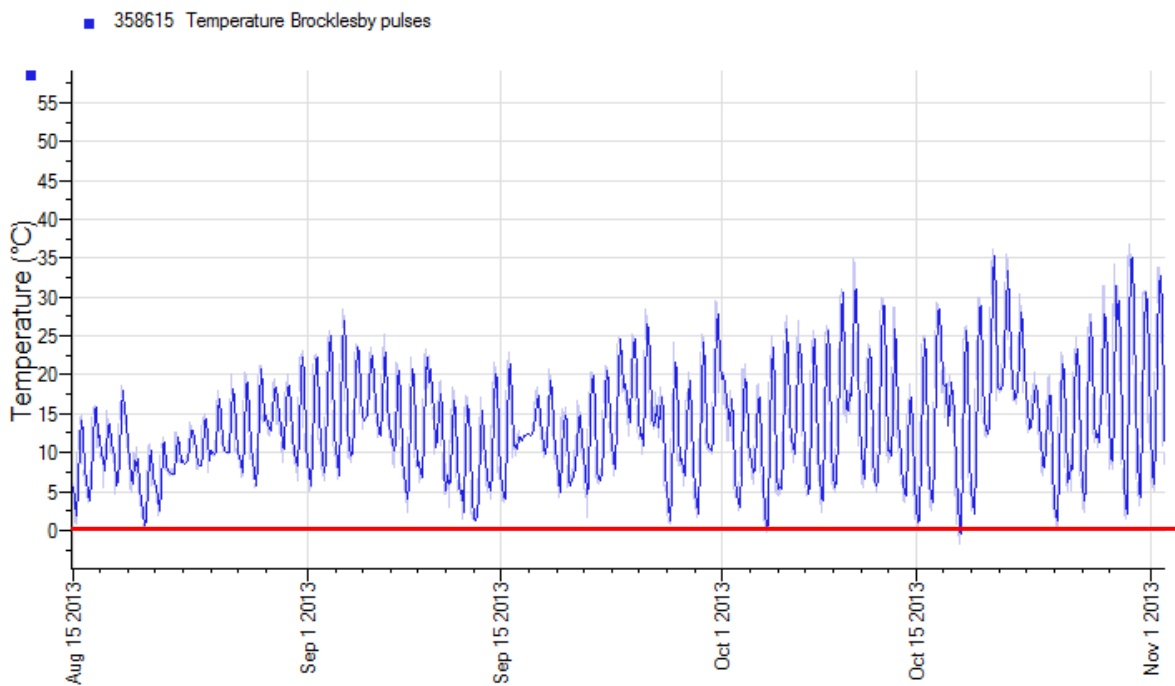
Trial Locations:

NSW	SA	VIC
Bellata	Keith	Dookie
Brocklesby	Lameroo	Kaniva
Bullarah	Laura	Wonwondah
Coleambally	Lock	
Coonamble	Maitland	
Harden	Minlaton	
Spring Ridge	Tarlee	
Temora	Bordertown	
Tulloona		
Walgett		

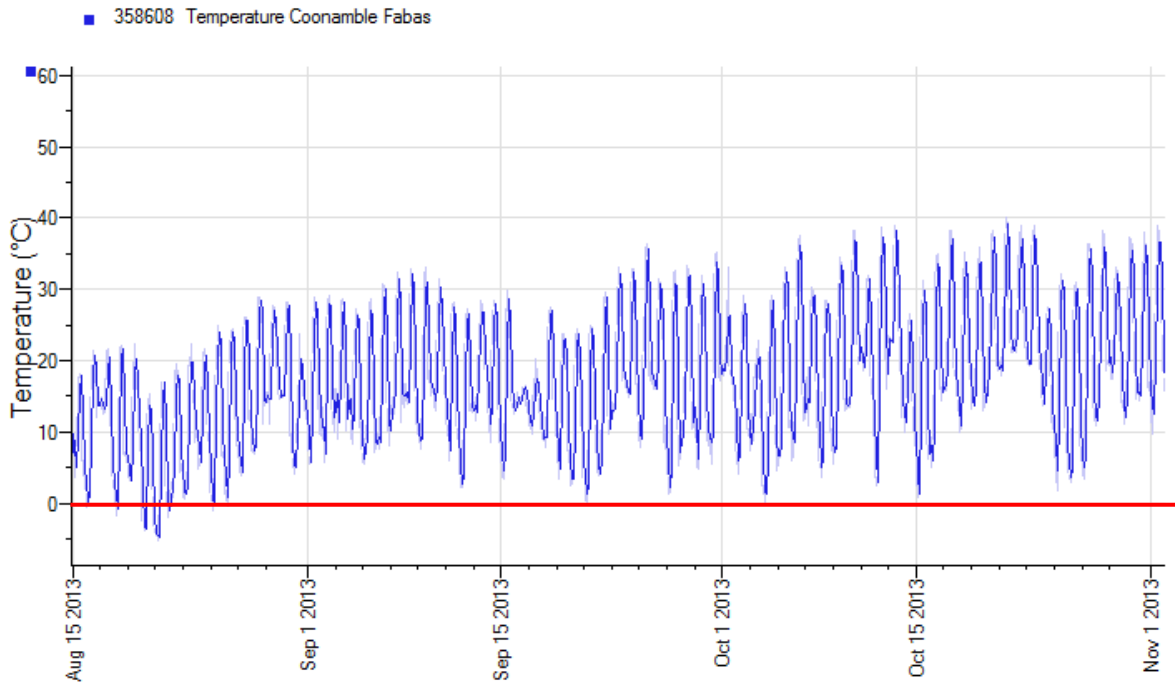
2013 Bellata Pulse



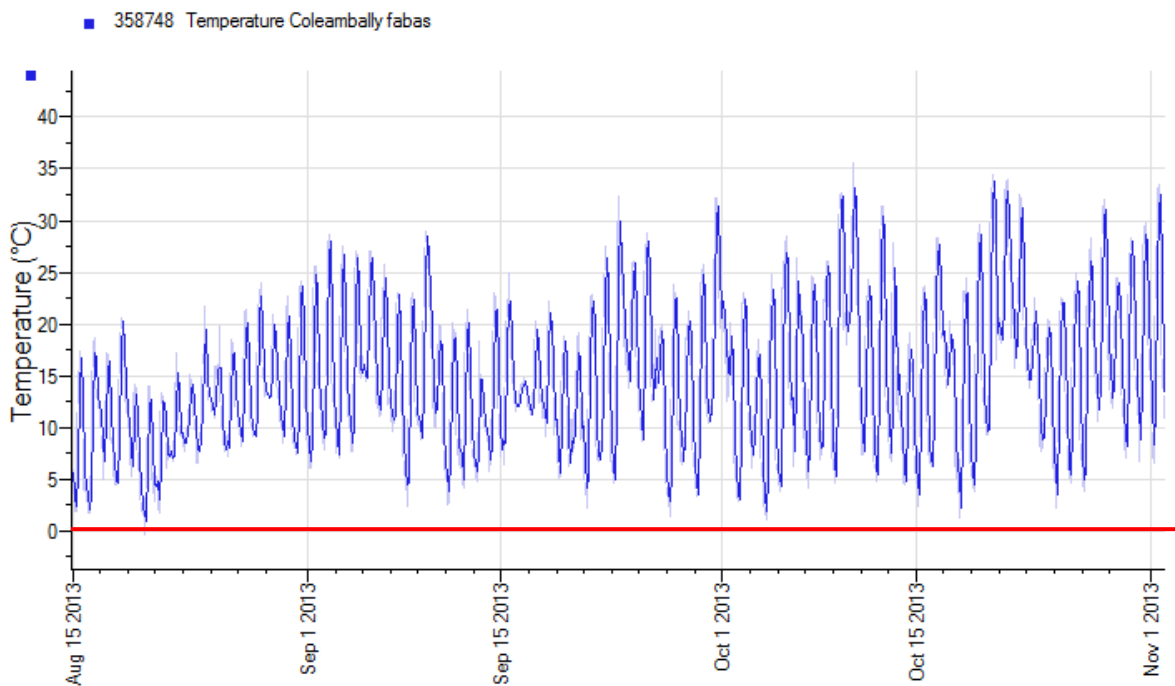
2013 Brocklesby pulses



2013 Bullarah Pulses



2013 Coleambally fabas



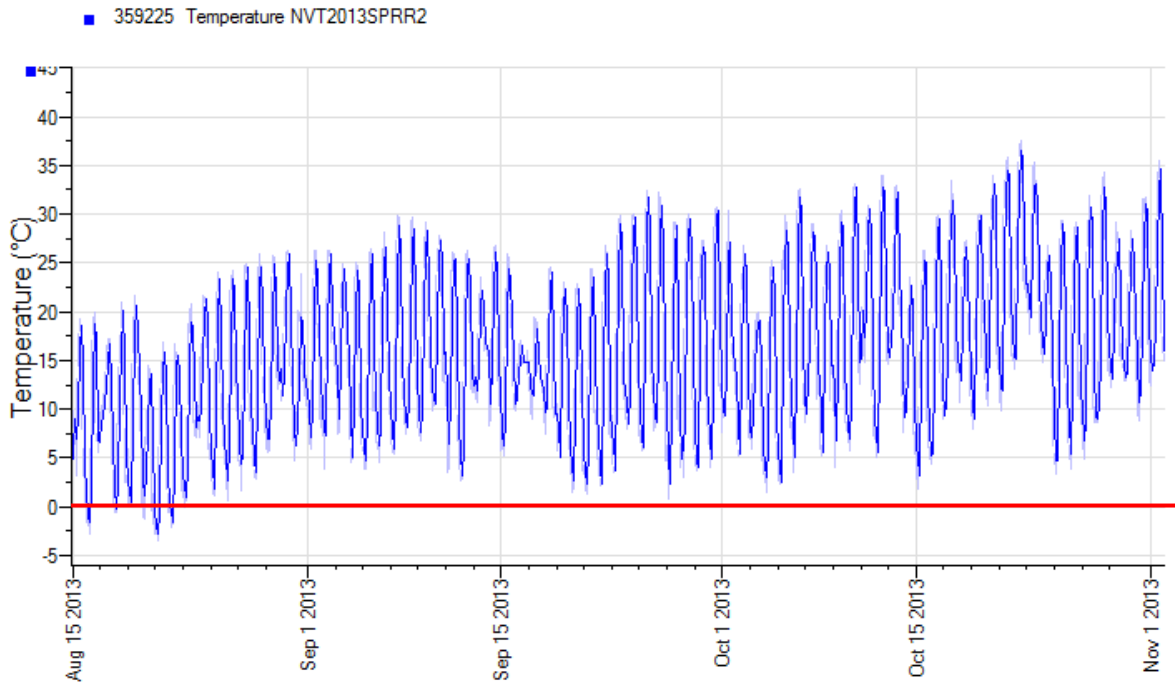
[Home](#)

Coonamble-Data not available at time of publication

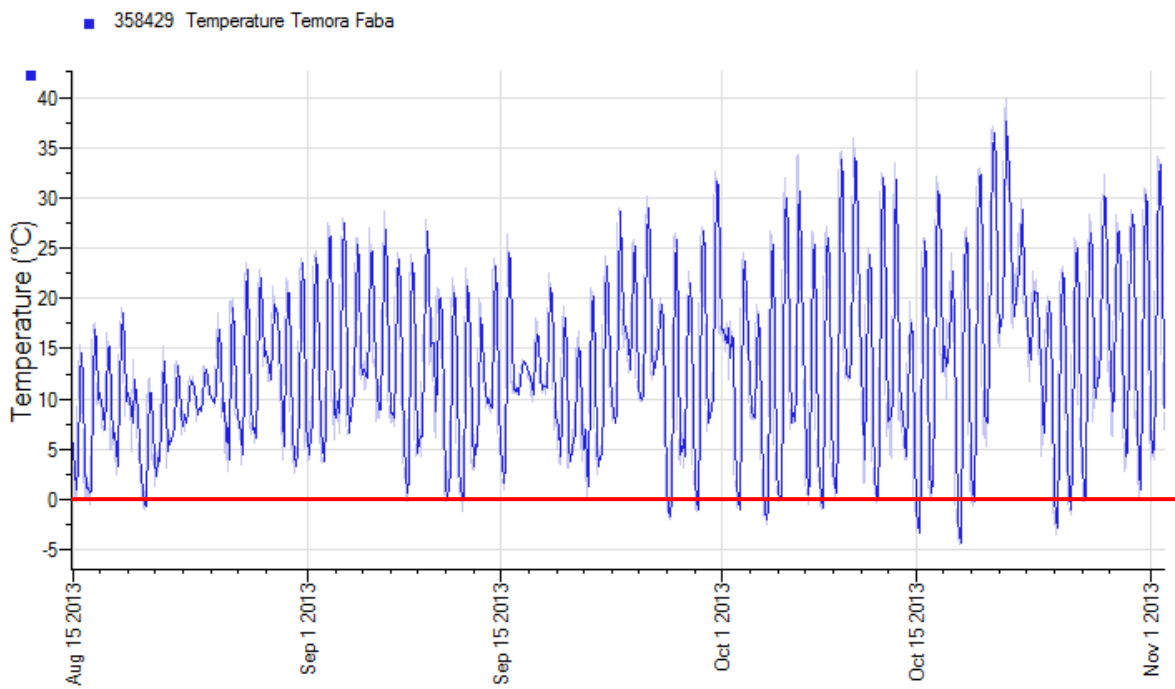
[Home](#)

Harden-Data not available at time of publication

2013 Spring Ridge Faba Bean

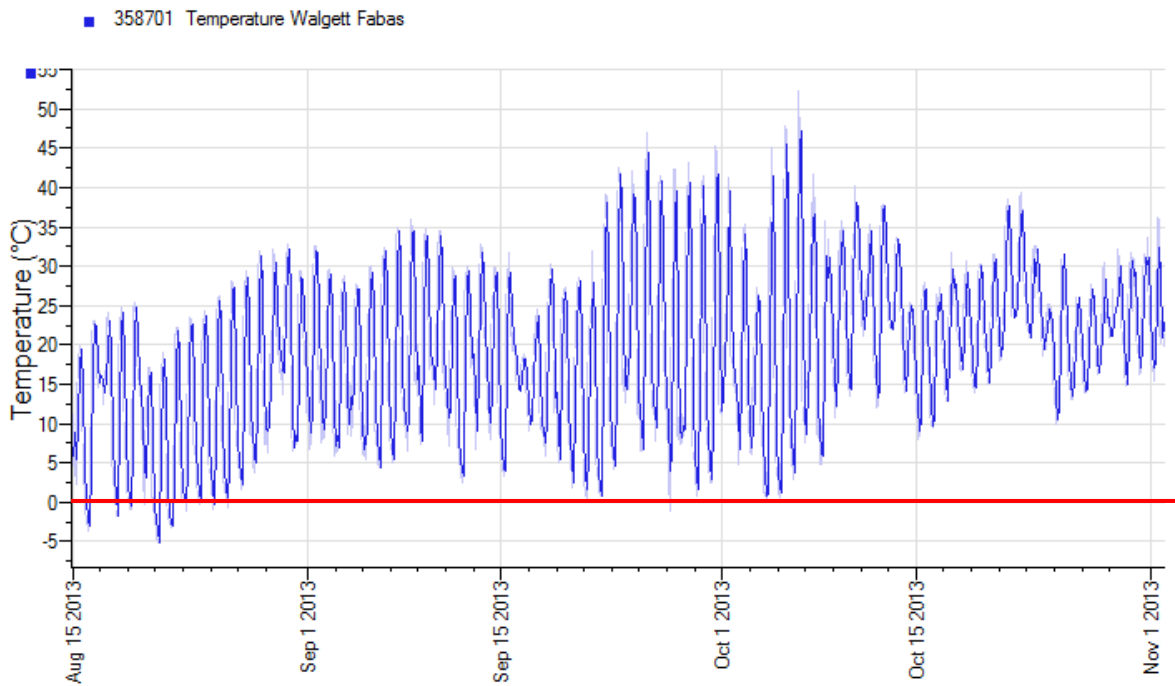


2013 Temora Faba Bean



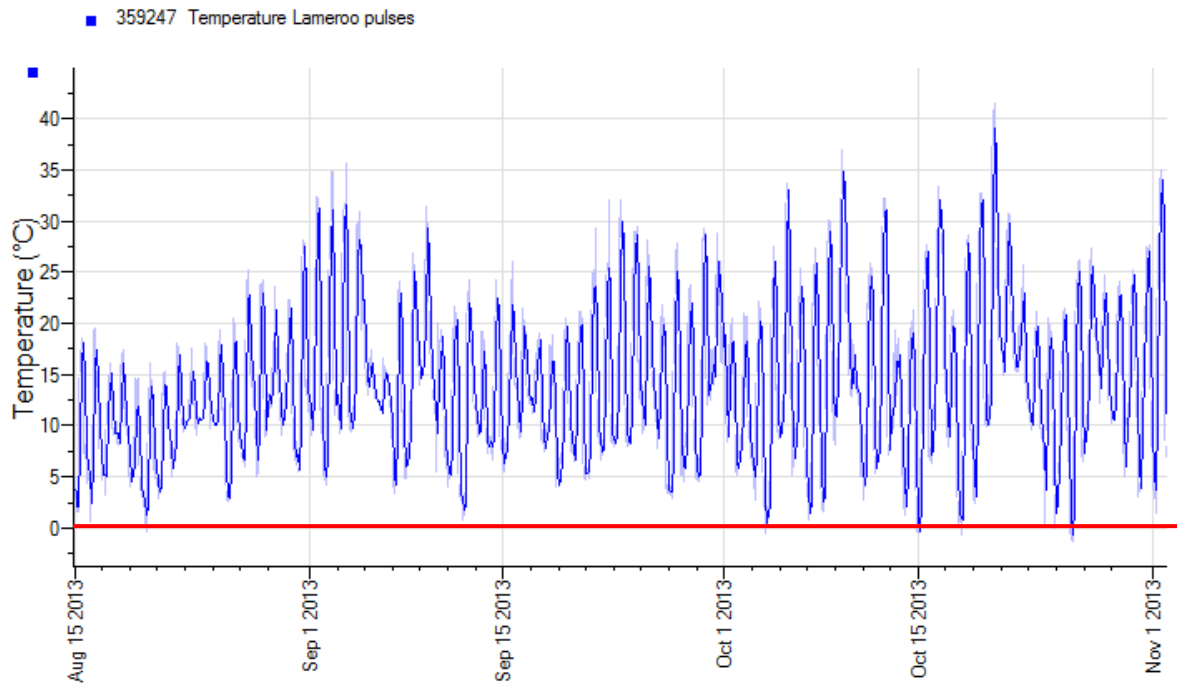
Tulloona-Data not available at time of publication

2013 Walgett Faba Bean

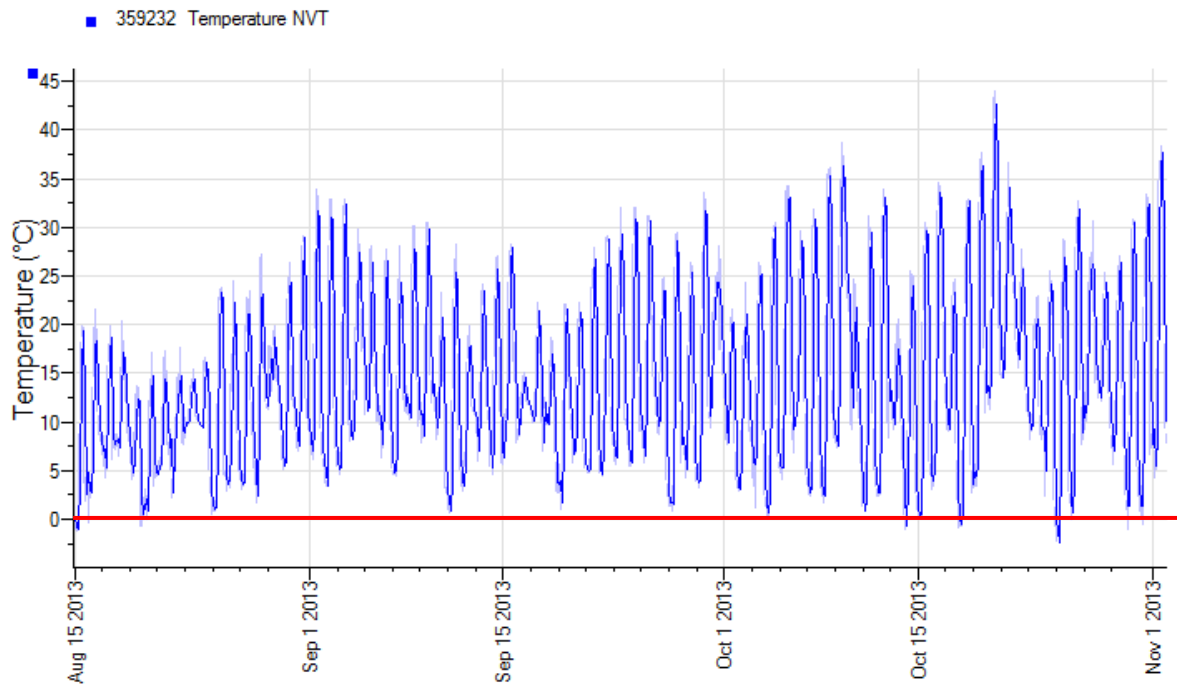


Keith-Data not available at time of publication

2013 Lameroo pulses

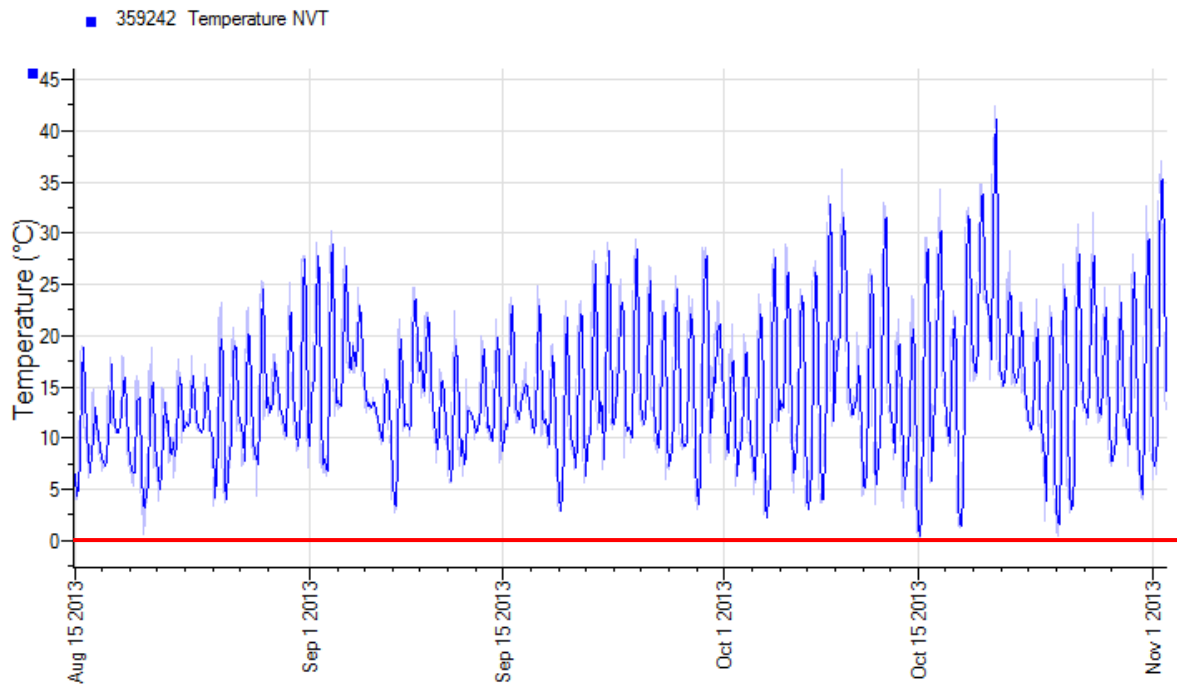


2013 Laura Pulse



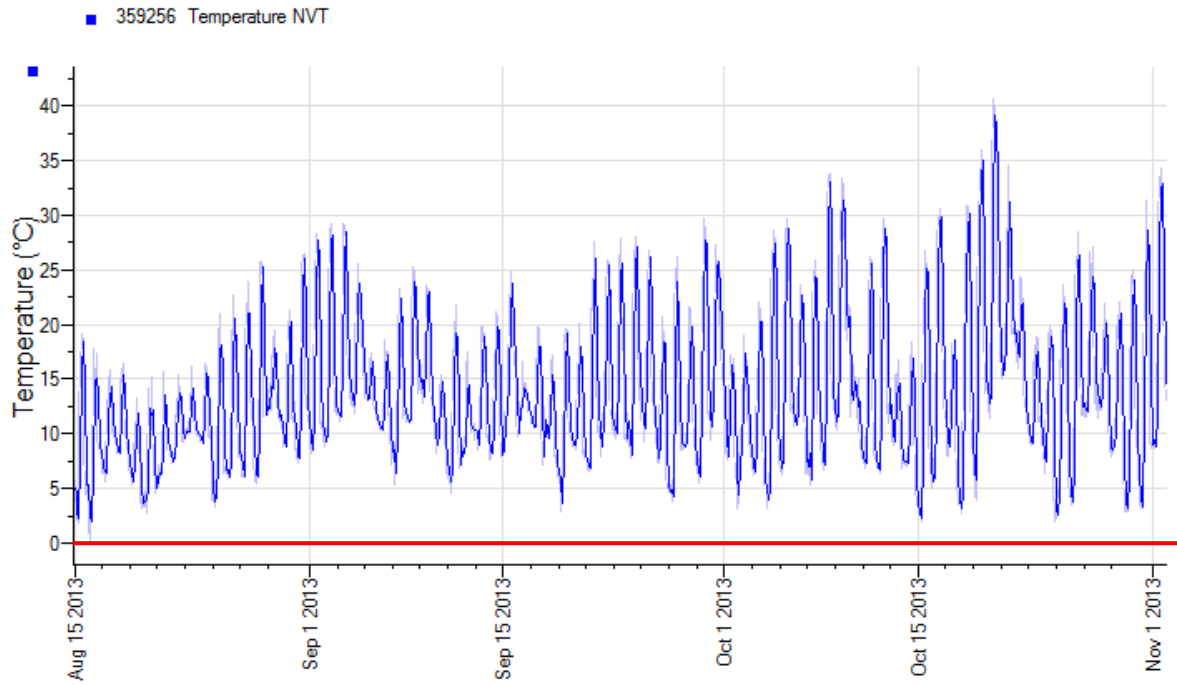
Lock-Data not available at time of publication

2013 Maitland Pulse



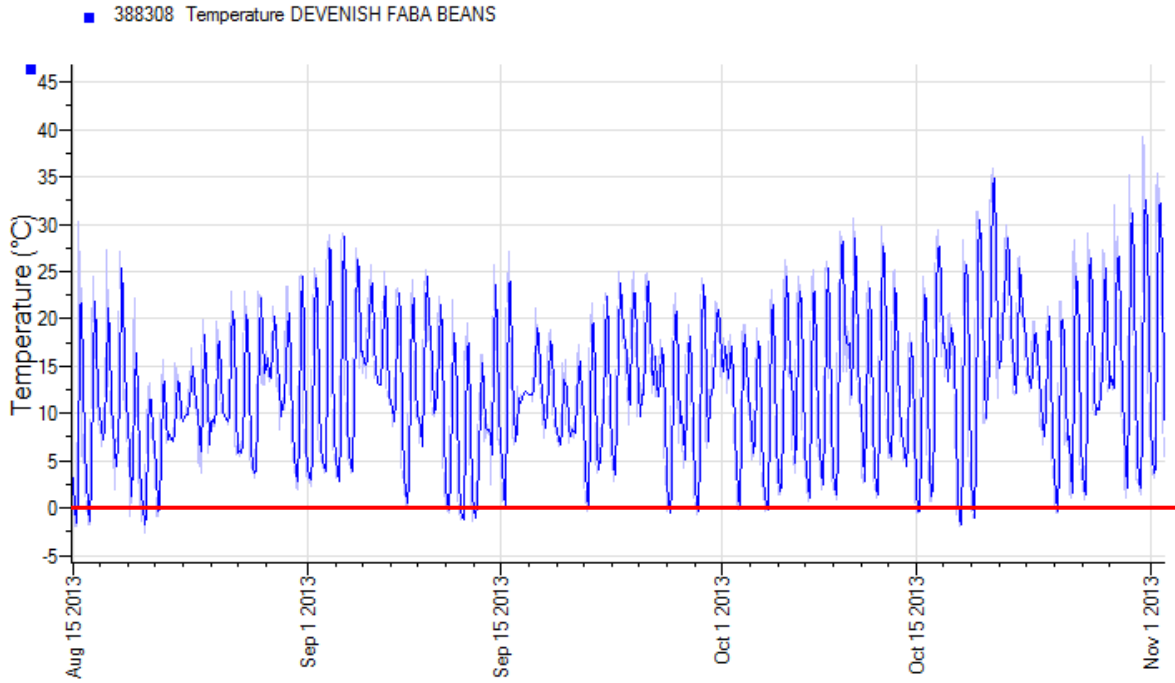
Minlaton-Data not available at time of publication

2013 Tarlee Beans

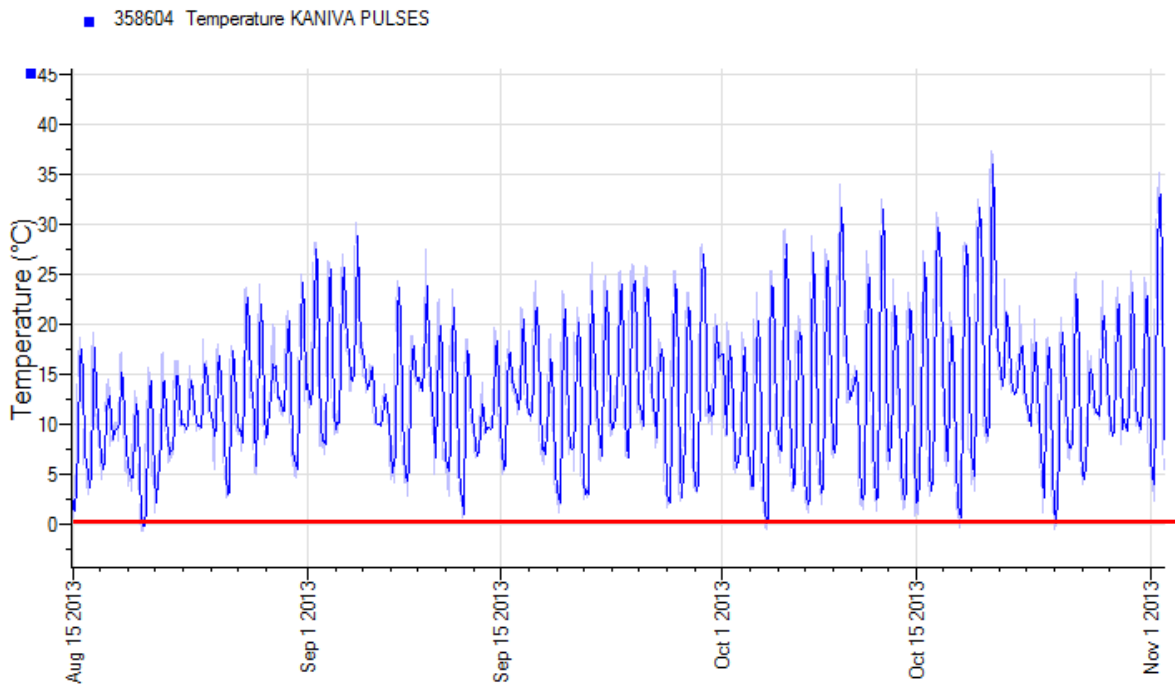


Bordertown-Data not available at time of publication

2013 Dookie Faba Beans



2013 Kaniva Pulses



2013 Wonwondah Beans

