

Introduction:

At most National Variety Trial sites there is a small device - a Tiny Tag - that is designed to capture the air temperature every 15 minutes throughout the growing season. This data can be used by NVT staff in determining the effect of temperature stresses on trials.

On the list of locations below, there are some that are shaded with a blue background. These locations have temperature data available. The remaining sites have no data available either because it has yet to be received, there was no Tiny Tag present at the site or the Tiny Tag malfunctioned.

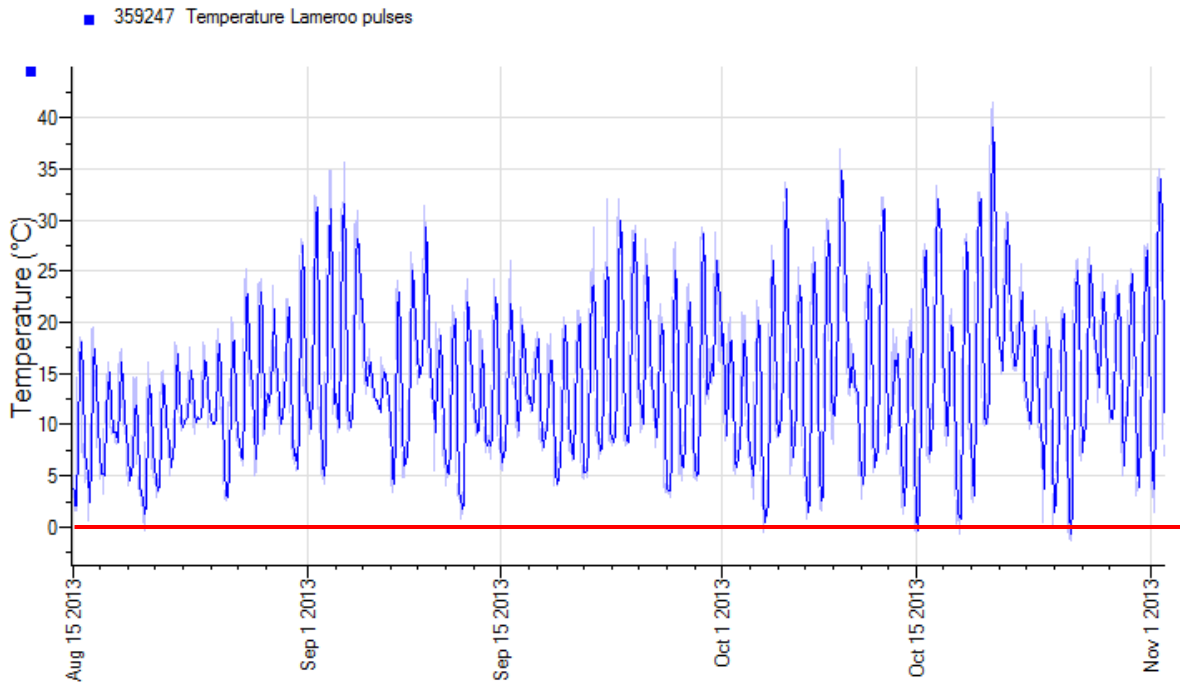
How to use this document:

Click on the location name to view the graph. The text is hyperlinked to the page with the graph for that location. To return to the list and view another location's data, click **home** at the top right corner of the page to return to this page.

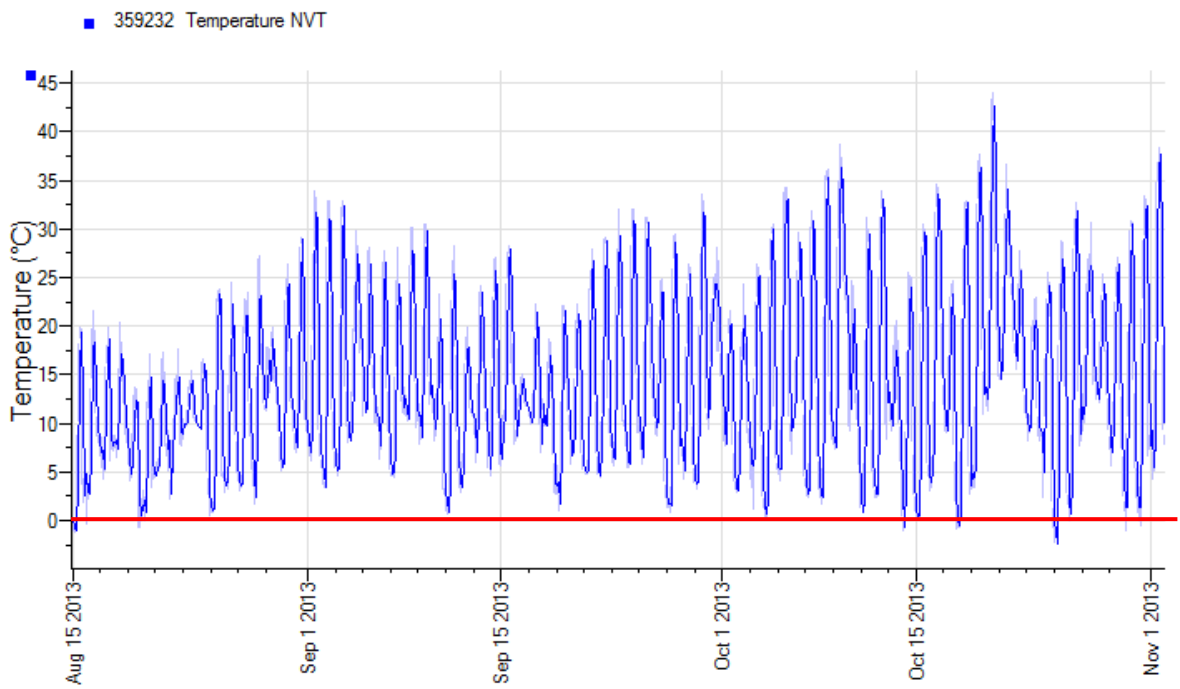
Trial Locations:

SA	VIC
Lameroo	Birchip
Laura	Kaniva
Maitland	Rainbow
Minlaton	Tarranyurk
Mundulla	Ultima
Riverton	
Willamulka	
Yeelanna	

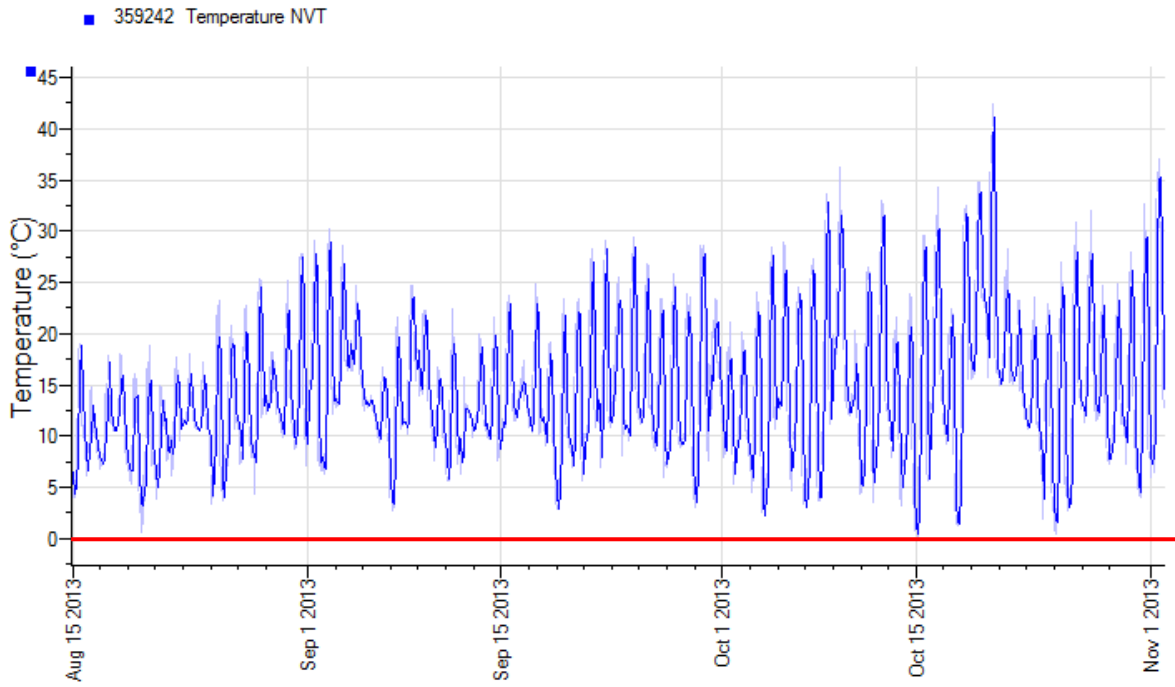
2013 Lameroo pulses



2013 Laura Pulse



2013 Maitland Pulse



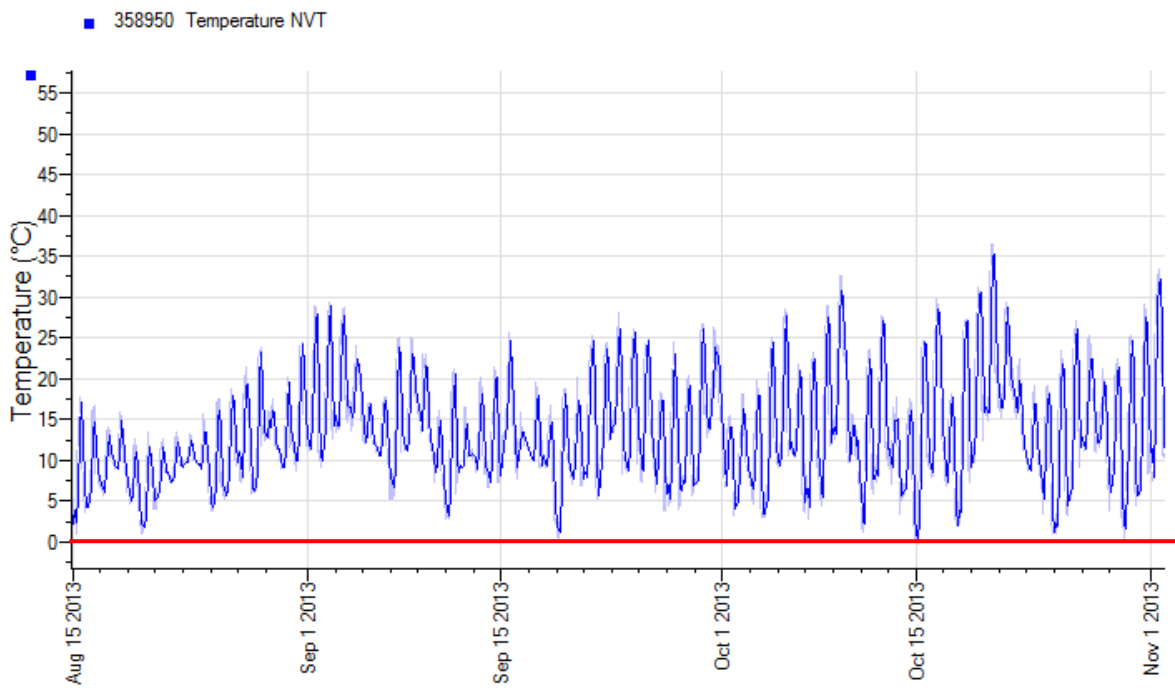
Minlaton Lentil -Data not available at time of publication

[Home](#)

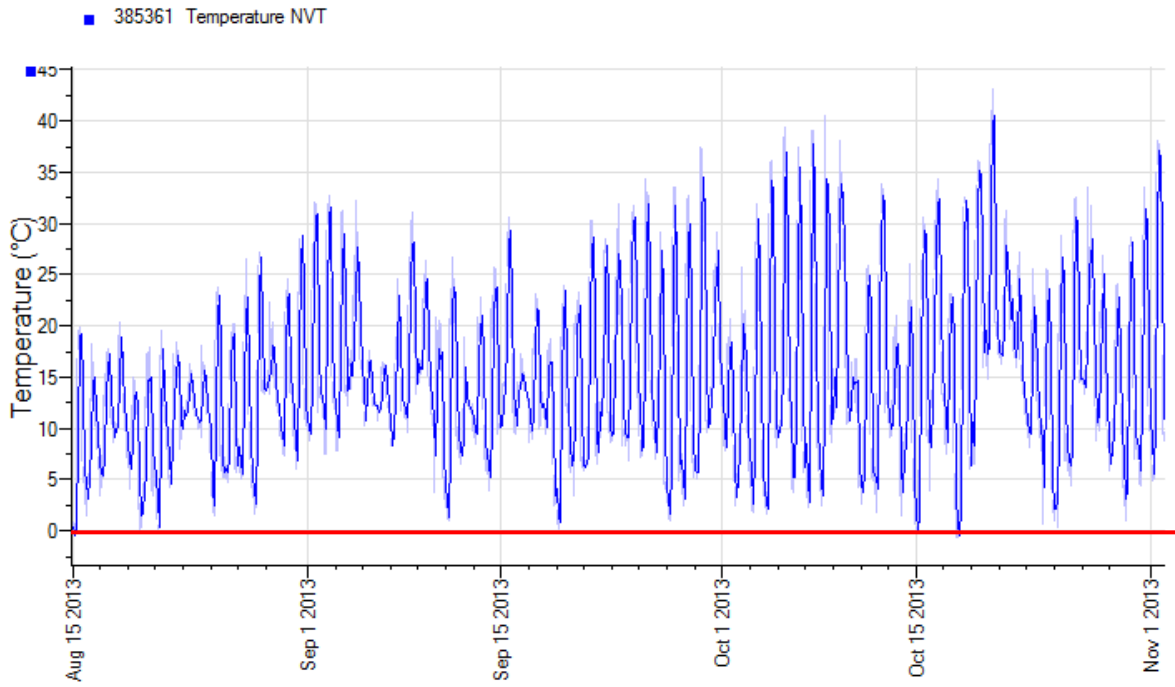
Mundulla Lentil -Data not available at time of publication

[Home](#)

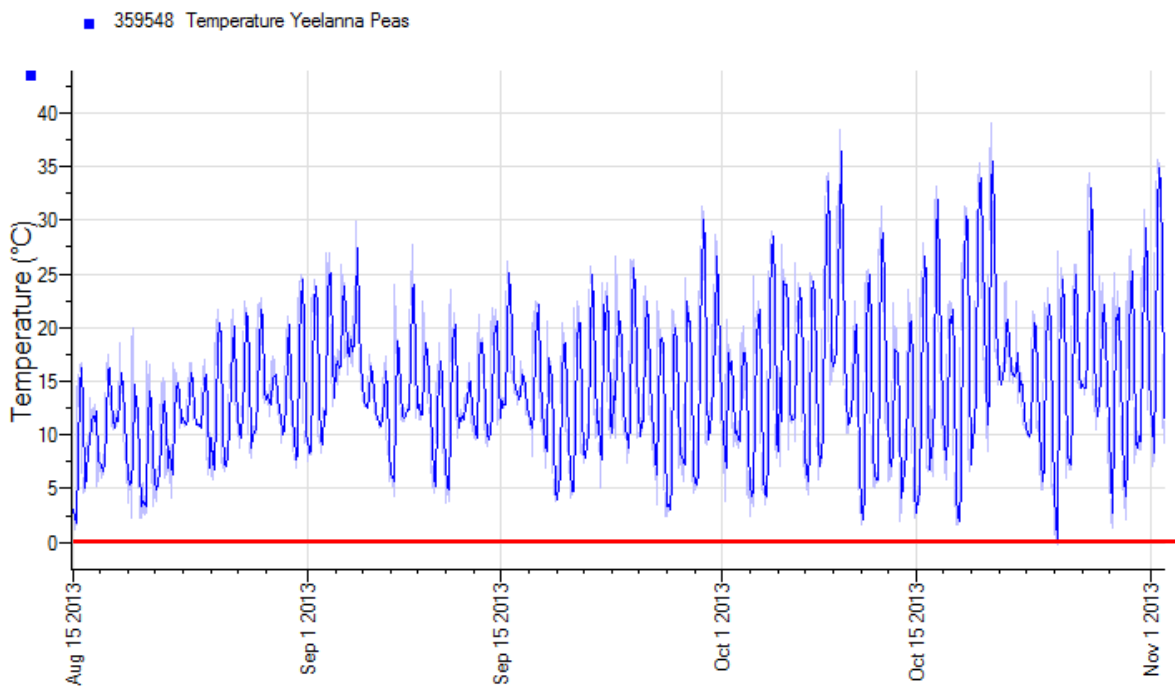
2013 Riverton Pulse



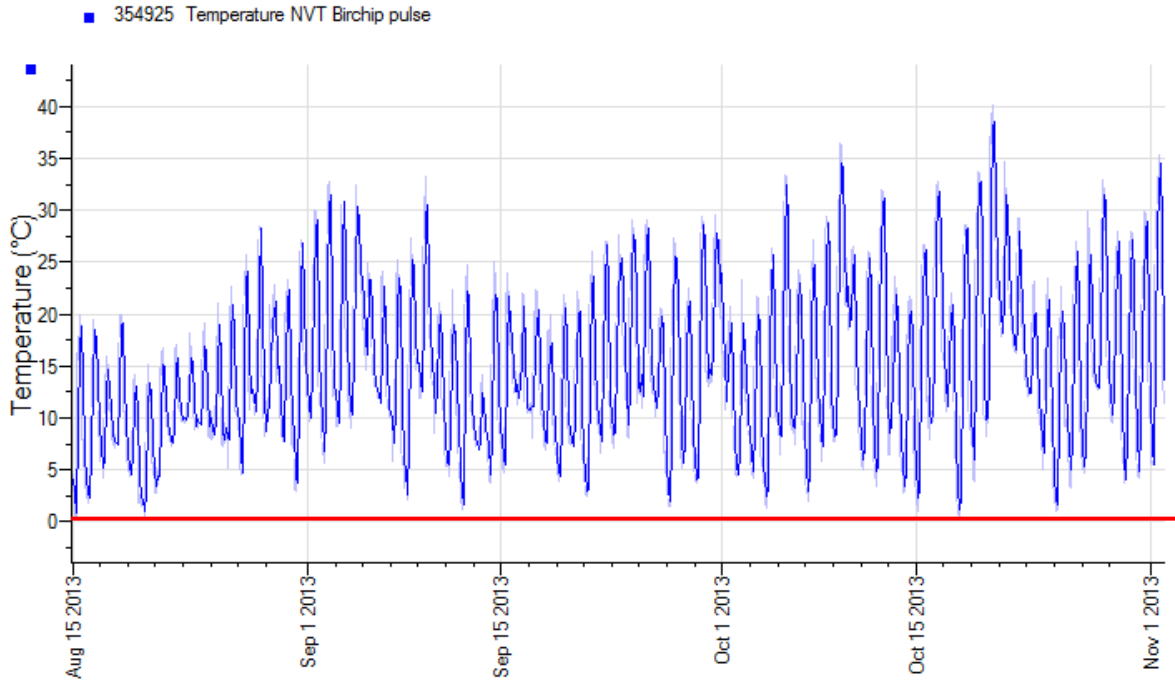
2013 Willamulka Pulses



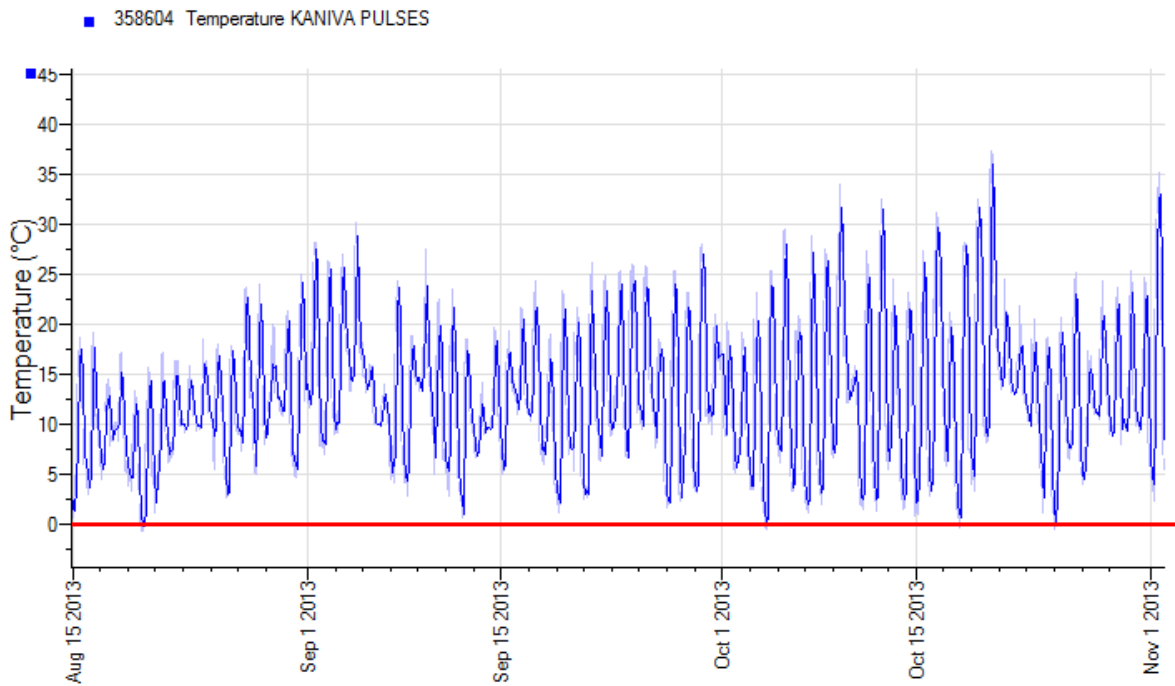
2013 Yeelanna Lentils



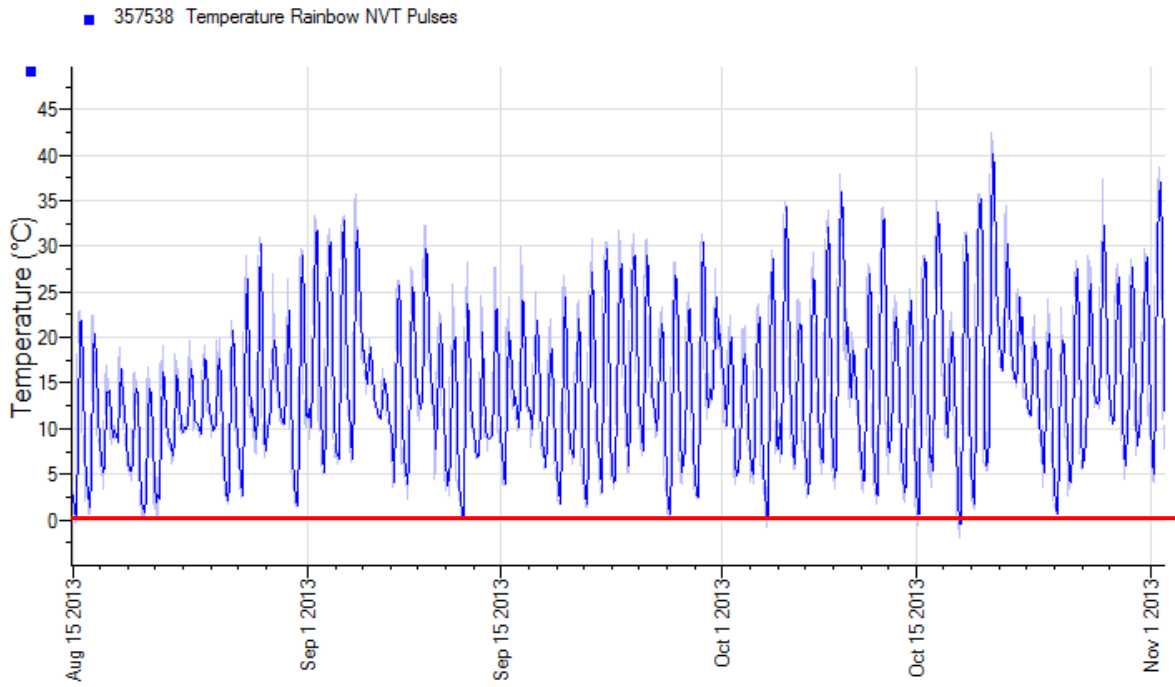
2013 Birchip pulse



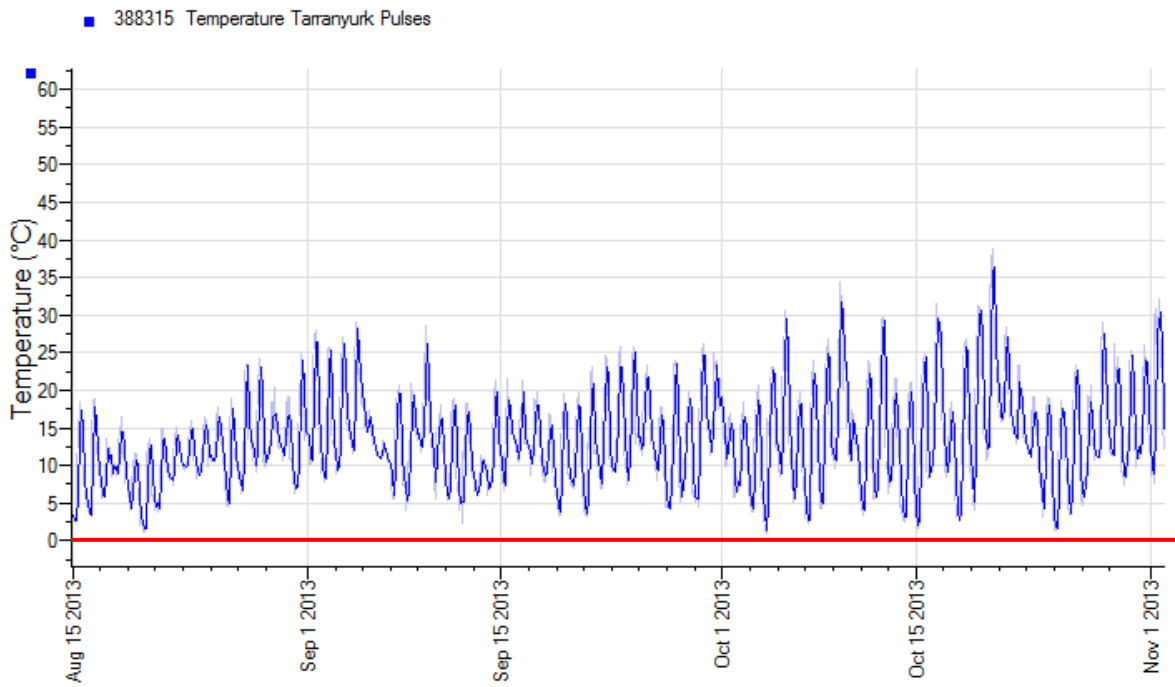
2013 Kaniva Pulses



2013 Rainbow Pulses



2013 Tarranyurk Pulses



2013 Ultima Pulse

